



510





# VISION

## Realised

在全新的壮观外观中轻松航行和快速巡游 - 著名的设计工作室Berret-Racoupeau在这艘15米的游艇上表现出色：甲板上和下都有宽敞的空间，无与伦比的运动和动感性能，以及无可比拟的功能性，配备有可选的太阳能电池和一个宽敞的小艇库。通过典型的汉斯众多配置选项，您可以将您的汉斯Hanse 510打造成您自己的个人度假天堂。

---

Easy Sailing and Fast Cruising in a new spectacular look - the renowned design studio Berret-Racoupeau has gone above and beyond with this 15-metre yacht: generous space on and below deck, an incomparably sporty and dynamic performance as well as unbeatable functionality complete with optional solar cells and a generously sized tender garage. With the many configuration options typical for Hanse, you can turn your Hanse 510 into your very own personal holiday paradise.

# INNOVATION

卓越创新

## 引领新潮：全新定义的Hanse 510

- ⌚ 超流体力学船体形状
- ⌚ 水线设计以提高性能
- ⌚ 同类别中最大的小艇库
- ⌚ 新开发的智能小艇系统
- ⌚ 高大而运动型的桅杆，实现帆面最大化
- ⌚ 标准的船首斜桅带有集成锚
- ⌚ 通过可选的第二个前支索增强你的Reacher帆的效果

- 
- ⌚ super hydrodynamic hull shape
  - ⌚ waterline designed for performance
  - ⌚ biggest dinghy garage in its class
  - ⌚ newly developed Smart Tender System
  - ⌚ tall and sporty rig for a maximised sail plan
  - ⌚ standard bowsprit with integrated anchor
  - ⌚ enhance your reacher with an optional second forestay





PIONEER  
Greshwold





在大海中感到宾至如归。法国世界级设计师 Berret-Racoupeau 独创的先进水动力学船体设计确保了卓越的平衡和稳定性。性能优化的水线与汉斯典型的运动感十足、高大的桅杆的完美结合，为航行提供了难忘的体验。

At home on the ocean. The progressive, hydrodynamic hull design from the pen of French world-class designer Berret-Racoupeau makes for extraordinary balance and stability. The combination of a performance-optimised waterline and Hanse's typically sporty and tall rig guarantees an unforgettable sailing experience.

# FAST

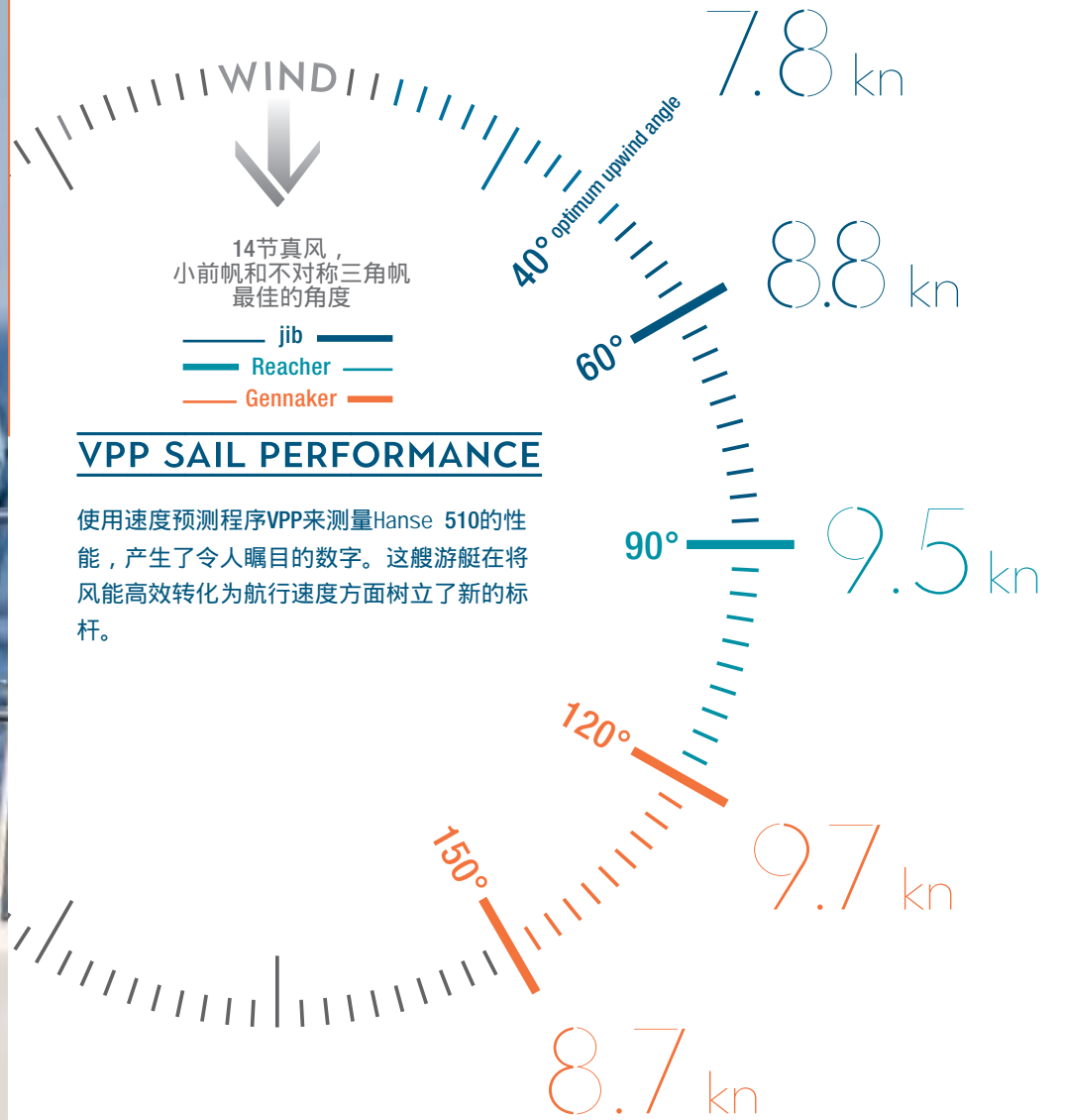
# 高速巡航



Feel the pleasure of

COMFORT  
&  
SPEED







TOTAL SAIL AREA

+ 189 m<sup>2</sup>  
GENNAKER  
128 m<sup>2</sup>

## 索具和风帆优化

高大的桅杆是每一艘Hanse的特点。Berret Racoupeau的游艇设计师通过使用高度复杂的计算模型，完美地为每艘Hanse设计帆布布局。这确保您在各种条件下都拥有最佳的航行特性，并确保您的Hanse是其类别中最快的游艇之一。

---

A high rig is the trademark of every Hanse. The yacht designers from Berret-Racoupeau perfectly form the sail plan for each Hanse with the use of highly sophisticated calculation models. This guarantees that you have the best sailing characteristics under all conditions, and it ensures your Hanse is one of the fastest yachts in its class.



## 高速巡航与轻松驾驶完美结合

无限航行：体验Hanse 510，一艘以其创新、现代和运动型船体设计而引人注目的游艇，在每个港口都引起轰动。然而，Hanse 510不仅仅提供引人注目的美学。独特的切浪船艏、流线型水线和精心设计的船脊确保了最佳的排水效果和无与伦比的浮力。通过其流体优化设计轻松滑过水面，将水阻降至最低，使您的航海冒险达到新的高度。

Unlimited Sailing: Experience the Hanse 510, a yacht that captivates with its innovative, modern, and sporty hull design, turning heads at every port. However, the Hanse 510 offers more than just striking aesthetics. The unique wave-piercer bow, streamlined waterline, and expertly positioned chines ensure optimal water drainage and unparalleled buoyancy. Glide effortlessly through the water with its flow-optimised design, reducing water resistance to a minimum and taking your sailing adventures to new heights.



LOA 15.97 m BEAM 4.9 m DRAFT 2.43 m DISPLACEMENT 16.54 t



## 汉斯智能调整系统

我们精心调整了帆布，使您能够像专业人士一样航行，并配置了可无缝调整的后支索，这使得桅杆和帆的轮廓能够始终完美地适应风力。

We have trimmed the sails so you can sail like a pro and included a backstay, which can be adjusted seamlessly. This enables the mast and the profile of the sail to perfectly adapt to the wind at all times.



Hanse轻松驾驶概念具有传奇色彩。我们发明了集成式自动调整前帆系统，并将所有索绳引导至驾驶位置。这意味着您可以独自航行您的船，或者在与客人共度时光的同时无忧无虑地航行。可以在掌舵上轻松完成收帆、升帆和起航。甲板没有绳索和配件，让您在海上或在港口放松时，提供无与伦比的舒适和空间。

The Hanse Easy Sailing Concept is legendary. We invented the integrated self-tacking jib and brought all the lines to the helm. This means you can sail your yacht on your own. Reefing, tacking and setting sail can all be performed from the helm without any effort. The deck is free of lines and fittings, giving you uncompromising comfort and space while you are at sea or relaxing in the harbour.

# EASY

轻松驾驶

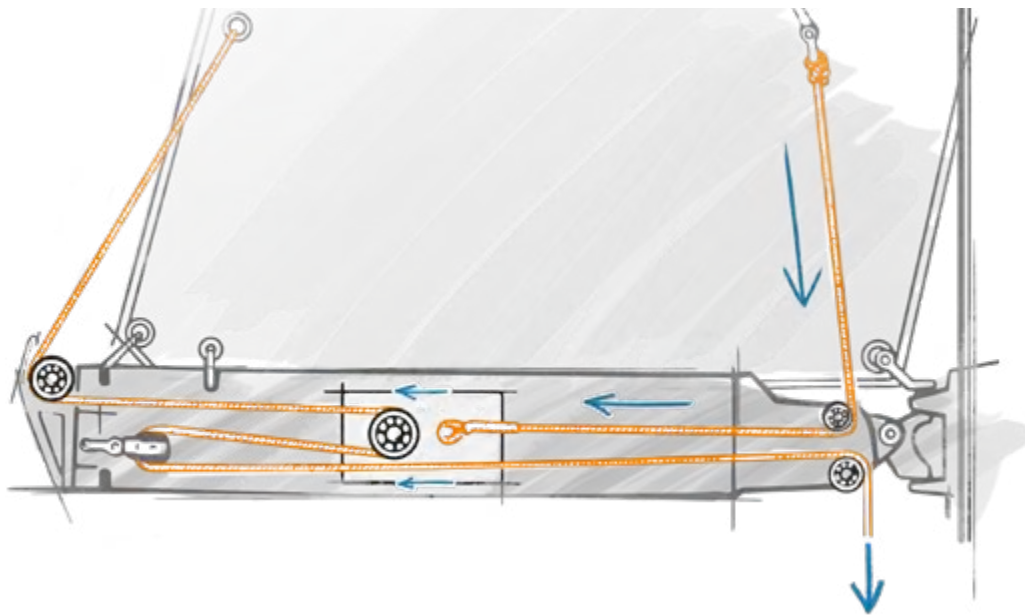
# SAILING





Hanse 510  
Hanse

PIONEER  
Greifswald



## 汉斯单绳收帆系统

您可以轻松从驾驶舱舒适的位置决定帆面积。汉斯单绳收帆系统确保您能够迅速而轻松地操作。

---

You decide the size of the sail area – easily from the comfort of the cockpit. The Hanse One-Rope Reef System ensures that handling is quick and effortless for you.



## 纯净的甲板和驾驶舱

清新而整洁。所有空间都采用极简主义设计，具有纯净而清晰的结构。我们甚至将绳索和索具优雅地隐藏在甲板下。

---

Clean and cool. All spaces feature a minimalist design, with a pure and clear structure. We have even hidden the halyards and sheets elegantly below the deck.





## 船首斜桅和主索的智能解决方案

始终获得最佳性能：通过脚杆上的两个前支索，您可以从驾驶舱方便地选择适合天气的正帆。为了实现最大化的帆面积并在操纵时更容易处理，Reacher帆和球帆的连接点已经移至前部。为了节省空间，主帆缭绳通过甲板上的两个固定点引导到舵轮，而不需要额外的滑车。主帆因此可以直接调整 - 这对独自航行的船员、小型船员或喜欢保持简单的人来说是完美的。

Always getting the best performance: with the two forestays on the bowsprit, you can conveniently choose the right headsail for the weather from the cockpit. The attachment points for reacher and gennaker have been moved forward to allow for maximised sail area and make for easier handling when manoeuvring. To save space, the main sheet is guided to the helm via two fixed points on the deck without an extra traveller. The mainsail can thus be trimmed directly – perfect for solo sailors, small crews, or just those who like to keep things simple.



## 前帆的灵活性

典型的汉斯自动换舷前帆与轻松航行同义。第二个前支索在轻松航行方面更上一层楼：不再需要交换帆，也不需要有人到前面去。只需保持航向，展开适合当前风力、天气和期望的航行体验的前支索。

---

The typical Hanse self-tacking jib is synonymous with relaxed sailing. The second forestay goes one better in terms of easy sailing: no more swapping sails, and no one has to go out in front. Simply stay on course and roll out the forestay that is best for the current wind, weather, and desired sailing experience.



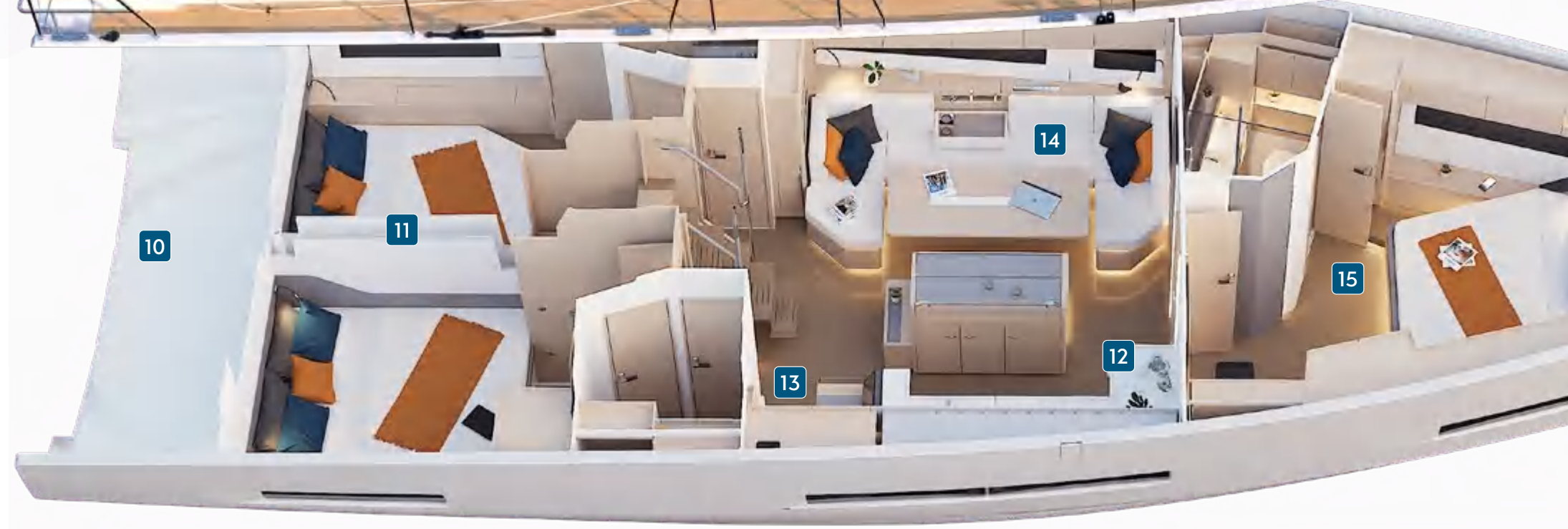
## 创新的驾驶舱技术

触摸按钮即可进行航行？在汉斯，您的梦想现在成为现实！从驾驶舱控制整个系统。所有绳索和索具也都通向驾驶站。这使您在所有航行操纵中拥有绝对的控制权。

---

Sailing at the touch of a button? With Hanse, your dream is now reality! Control the entire system from the cockpit. All the halyards and sheets also lead to the helm station. This gives you absolute control in all sailing manoeuvres.







# DESIGN

## 创新设计

### 外观&内饰设计亮点

1 折叠式柚木游泳平台 2 驾驶座椅，可选烧烤和洗手池 3 运动型双舵轮 4 人体工学设计的导航仪支架 5 在舷梯旁的实用储物空间 6 八个船体窗户 7 十四个可开启的甲板舱口 8 汉斯自动换舷前帆 9 前甲板上的天窗 10 宽敞的小艇库 11 明亮宽敞的艙舱 12 宽敞而设备齐全的厨房 13 舒适的导航站作为控制中心 14 时尚客厅，配有休息沙发、优雅可降低的客厅桌和电动可收放的大屏电视 15 豪华船东舱，配有特大岛型床、宏伟的大天窗和大量储物空间

1 Folding teak bathing platform 2 Helmsman seats with optional BBQ and washbasin 3 Sporty twin helms 4 Ergonomic plotter pods 5 Practical storage space next to the companionway 6 Eight hull windows 7 Fourteen openable deck hatches 8 Hanse self-tacking jib 9 Skylights in foredeck 10 A huge tender garage 11 Bright, roomy aft cabins 12 Spacious, fully equipped galley 13 Comfortable navigation station as a control centre 14 Stylish saloon with lounge sofas, elegant, lowerable saloon table and electrically retractable flat-screen television 15 Luxurious owner's cabin with king-size island bed, magnificent large skylights and lots of storage space





## 创新的外观设计

拥有汉斯，您就拥有一艘引人注目的先进游艇。技术创新和每一个细节的高质量都是汉斯Hanse 510的重要组成部分，正如情感设计和舒适的舒适氛围一样。每一个细节都是卓越设计的微妙表达。先进技术及其集成的精心编排的整体是汉斯游艇设计的最高艺术 - 这正是驱使我们创造完美游艇的动力。

---

With Hanse, you have a progressive yacht that makes a statement. Technical innovations and quality in every detail are just as much part of the Hanse 510 as are an emotional design and comfortable atmosphere of well-being. Each detail is a subtle expression of superior design. The well-orchestrated ensemble of advanced technology and its integration is the highest art of yacht design at Hanse – and what drives us to create the perfect yacht.

汉斯Hanse 510最好的额外福利就是绝对自由的感觉。通过汉斯Hanse 510巧妙的小艇库，您将发现无与伦比的便利，该小艇库可以容纳长达2.70米的小艇而无需排气。再加上可选的自动舒适梯子和最先进的汉斯智能小艇系统，即使是单独的船员也可以在几分钟内迅速而安全地启动小艇，包括发动机。

The feeling of absolute freedom is the best extra of the Hanse 510. Discover unparalleled ease with the Hanse 510's ingenious dinghy garage, which can house a dinghy of up to 2.70 metres without requiring deflation. Coupled with the optional automatic comfort stairs and the state-of-the-art Hanse Smart Tender System, even a lone crew member can swiftly and safely launch the dinghy, engine included, within a matter of minutes.









全新的维度：1 沉浸在一个在同类别中无与伦比的宽敞驾驶舱中，为与朋友或家人放松提供了理想的环境。驾驶员可以享受到一对人体工学设计的驾驶台，确保了开阔的全景视野。2 观察驾驶舱桌平稳下降，变成邀请的日光浴躺椅，供您放松身心。3 浴区宽敞的台阶提供了舒适的出水通道。这将浴平台变成了一个带有豪华水上通道的私人海滩。

A whole new dimension: 1 Immerse yourself in a spacious cockpit that is unparalleled in its class, providing an ideal setting for unwinding with friends or family. The helmsman is treated to a pair of ergonomically designed steering columns, ensuring an unobstructed panoramic view. 2 Observe as the cockpit tables smoothly descend, transforming into inviting sun loungers for relaxation. 3 The spacious steps of the bathing area offer a comfortable exit from the water. This turns the bathing platform into a private beach with luxurious water access.







## 创新的内饰设计

便利和风格：散发着明亮、现代和阁楼般的氛围，汉斯 Hanse 510 将您包裹在一种精致的、令人愉悦的氛围中。游艇宽敞的窗户和舱口进一步增强了其异常通风的感觉，所有这些都可以通过打开，大量新鲜空气和光线进入内部。丰富的室内设计选项，结合当代材料和颜色，使您能够打造一个真正符合个人品味的独特风格。

Convenience and style: Radiating a bright, modern, and loft-like ambience, the Hanse 510 envelops you in a sophisticated, feel-good atmosphere. The yacht's exceptionally airy feel is heightened by its expansive windows and hatches, which can all be opened to invite a generous flow of fresh air and light into the interior. A wealth of interior design options, coupled with contemporary materials and colours, allows you to craft a truly bespoke style that embodies your individual taste.



与您的品味完美契合：1 陶醉于现代、宽敞的厨房，配备了所有必需品，并设计有出色的空气流动。宽敞的可选拉出式冰箱隔间确保轻松取用和充足的储藏空间。聚集在特大的客厅桌周围，适合与亲人度过难忘的夜晚和温馨的餐点。2 L型的工作台提供了足够的空间，方便食物准备和烹饪。与精致的室内相辅相成，无缝集成的壁柜可容纳所有必需的器具。

Perfectly aligned with your taste: 1 Delight in the contemporary, generously sized galley, complete with all the essentials and designed for excellent airflow. The roomy optional pull-out refrigerator compartment ensures easy access and ample storage. Gather around the exceptionally large saloon table, perfect for memorable evenings and warm meals with loved ones. 2 The L-shaped worktop provides ample space for convenient food preparation and cooking. Complementing the sophisticated interior, the seamlessly integrated wall units accommodate all essential utensils.



创新设计

真正的精彩在于细节：游艇的智能功能使客厅能够无缝地转变成家庭影院体验。只需轻轻一按按钮，平板电视就会出现，为营造非凡的氛围奠定基础。欣赏您最喜爱的电影或系列剧，享受无与伦比的视觉质量，使您的游艇成为一个放松和娱乐的圣地。

True brilliance is in the details: The yacht's smart features enable the seamless transformation of the salon into a home cinema experience. With a simple touch of a button, the flatscreen TV emerges, setting the stage for an extraordinary atmosphere. Delight in your favourite films or series with unparalleled visual quality, making your yacht a sanctuary for relaxation and entertainment.







舒适与控制：1 中央控制台上智能而用户友好的控制面板，让您轻松访问船上的电子设备。2 稳固的扶手始终确保在波涛汹涌的海上操作时的舒适和安全。

Comfort and control: 1 The smart and user-friendly control panels in the centre console allow effortless access to the onboard electronics. 2 A stable handrail always ensures comfortable and safe operation even on rough seas.



体验纯粹的优雅：1 带有独立淋浴的套间主人浴室以其清晰、时尚的设计、宽敞的存储空间和高质量的木材和石材等材料而令人印象深刻。在这里，您可以逃离到轻松的氛围中，充分享受健康的乐趣。

2 带有大量存储空间的梳妆台也可以用作办公室 - 舒适性和功能性的完美结合。

Experience pure elegance: 1 The ensuite owner's bathroom with separate shower impresses with its clear, stylish design, generous storage space and high-quality materials such as wood and stone. Here you can escape to a relaxed atmosphere and enjoy wellness to the full. 2 The vanity table with plenty of storage space can also be used as an office - a perfect combination of comfort and functionality.





一个隐蔽和放松的地方：一个承诺提供无与伦比的舒适和放松的私人圣地。宁静的氛围让您可以享受宁静和恢复活力的时刻，使其成为放松和充电的理想场所。这个舱房设备齐全，提供带有套间浴室的优雅岛型床、宽敞的存储空间和架子，以及通过大型天窗和船体窗户欣赏到的惊人景色等丰富的设施。

A place to retreat and relax: A private sanctuary that promises unbeatable comfort and relaxation. The peaceful ambiance allows for undisturbed moments of tranquillity and rejuvenation, making it the ideal place to unwind and recharge. The cabin is fully equipped and offers an ensuite bathroom as well as a wealth of amenities, such as an elegant island bed, generous storage space and shelves as well as a breathtaking view through large skylights and hull windows.



您的客人将一无所求。在两个艙艙中，他们可以期待一个舒适的双人床，欣赏到海洋的壮丽景色。这些艙房高度足够让人站立，并提供充足的存储空间，用于存放个人物品。

Your guests will want for nothing. In the two aft cabins, they can expect a comfortable double berth with a magnificent view of the ocean. The cabins are tall enough to stand in and provide plenty of storage space for personal belongings.



根据所选择的布局，汉斯Hanse 510提供多达三间浴室，为业主提供最大的隐私保障。无论是与家人还是朋友一起航行，每个人都可以享受自己浴室的好处，私密地清新或放松。通过这种灵活性，汉斯Hanse 510可以实现更加舒适和安宁的航行体验。

---

Depending on the chosen layout, the Hanse 510 offers up to three bathrooms, guaranteeing maximum privacy for the owners. Whether with family or friends on board, everyone can enjoy the benefits of their own bathroom and freshen up or relax in privacy. With this flexibility, the Hanse 510 allows for an even more comfortable and undisturbed sailing experience.





无论您航行到哪里 - 您的汉斯都是独一无二的。您可以选择船体的颜色以及吸引您目光的座椅套色。在甲板上，决定在您的Hanse游艇上包括哪些技术设备完全取决于您。内部也承载着您的个性。在现代的阁楼氛围中或被海洋的优雅环绕中享受在海上的自由。高质量的材料和独家的配件等待着您。

Wherever you sail – your Hanse is one of a kind. You choose the colour of the hull and which upholstery you would like to catch your eye. On deck, the decision of which technical equipment to include on your Hanse yacht is all yours. The interior also carries your signature. Enjoy the freedom at sea in a modern loft atmosphere or surrounded by maritime elegance. High-quality materials and exclusive fittings await you.



# INDIVIDUAL

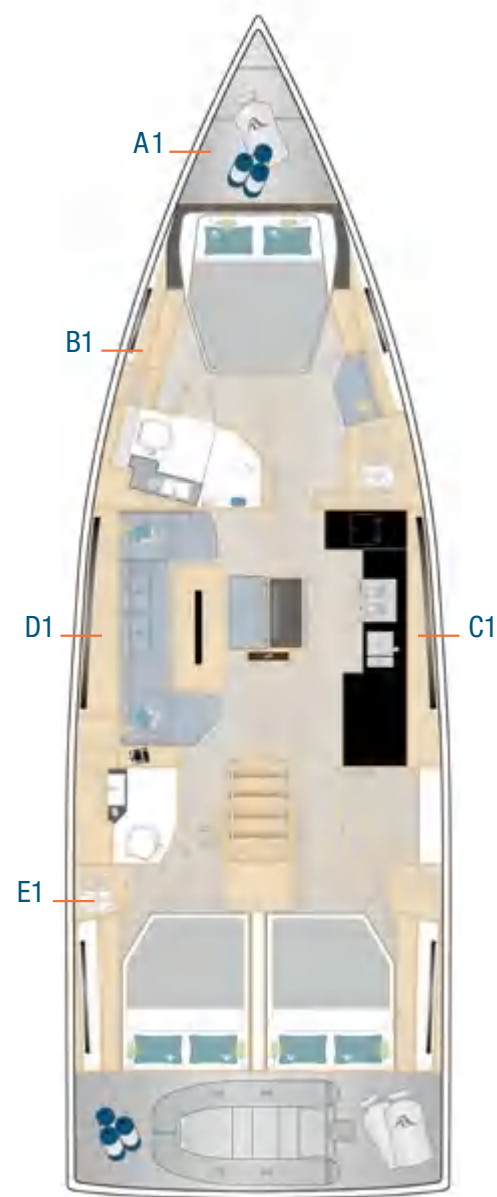
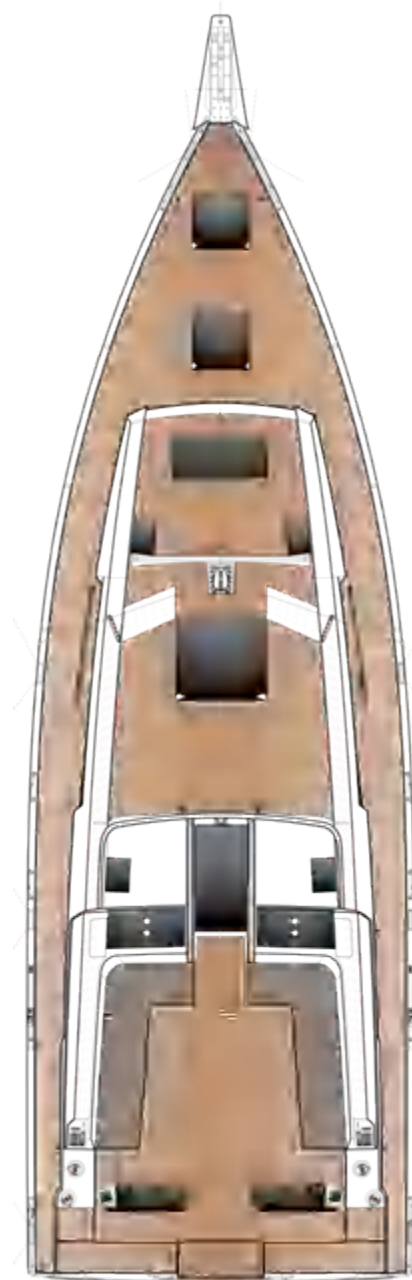
CUSTOMISATION 个性定制

 510

## 个性化舱室概念

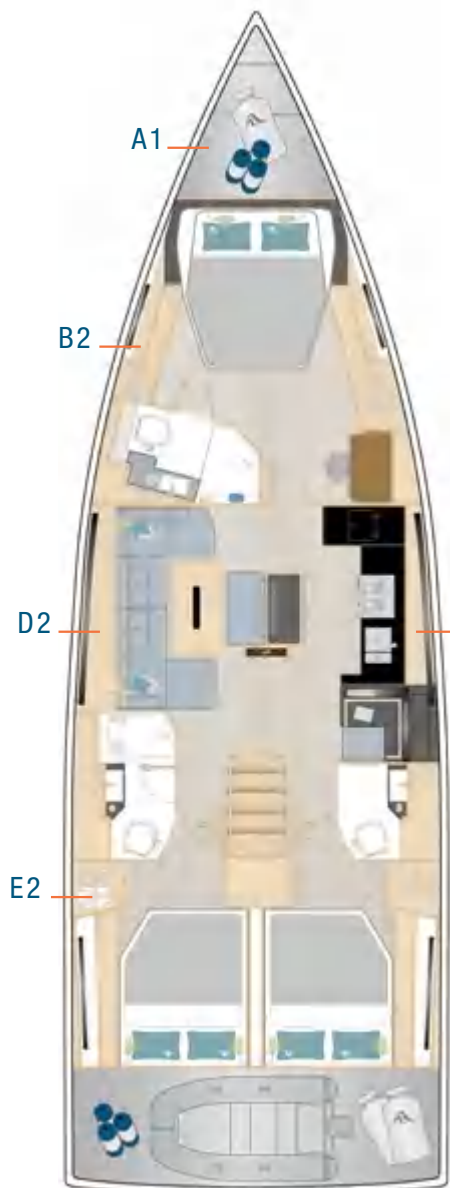
无论您是作为一对夫妇、与家人还是与朋友一起航行，我们都可以根据您的需求个性化定制您的汉斯Hanse 510的布局。选择适合您的定制和布局选项，无论是另一间浴室、一个适合四个人的前舱还是船东舱内的第二个大衣柜。

Do you prefer to sail as a couple, with your family or with friends? We can individually tailor the layout of your Hanse 510 to your needs. Choose the customisation and layout options that are right for you, be it another bathroom, a foreship for four individuals or a second large closet in the owner's cabin.

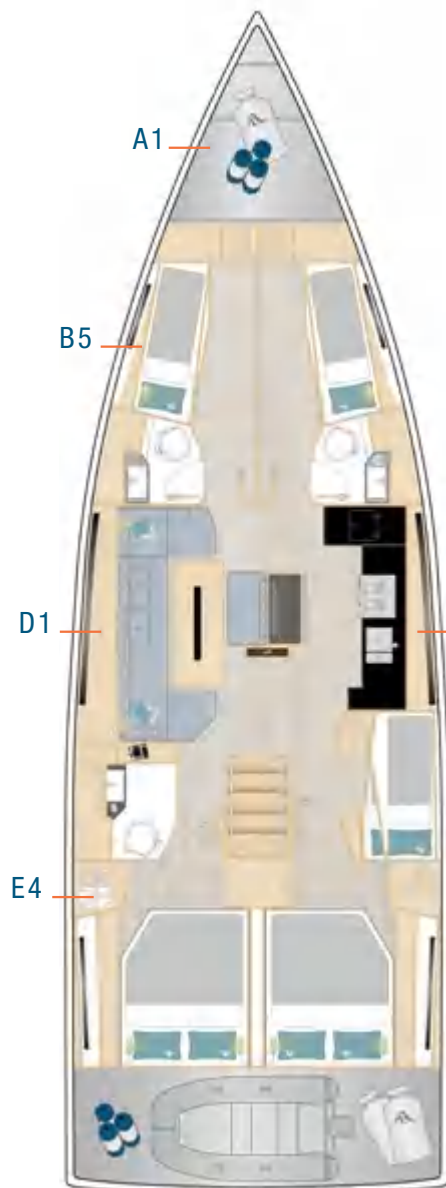


标配

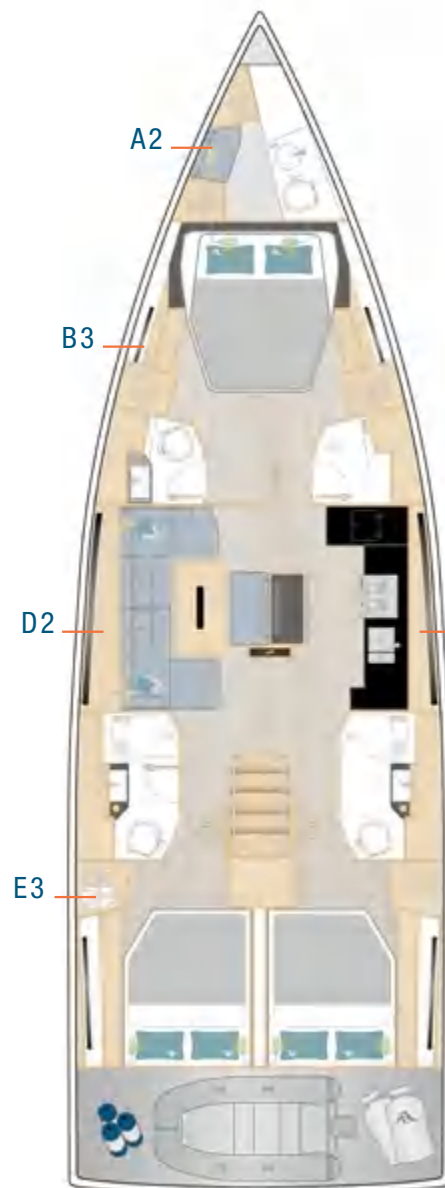




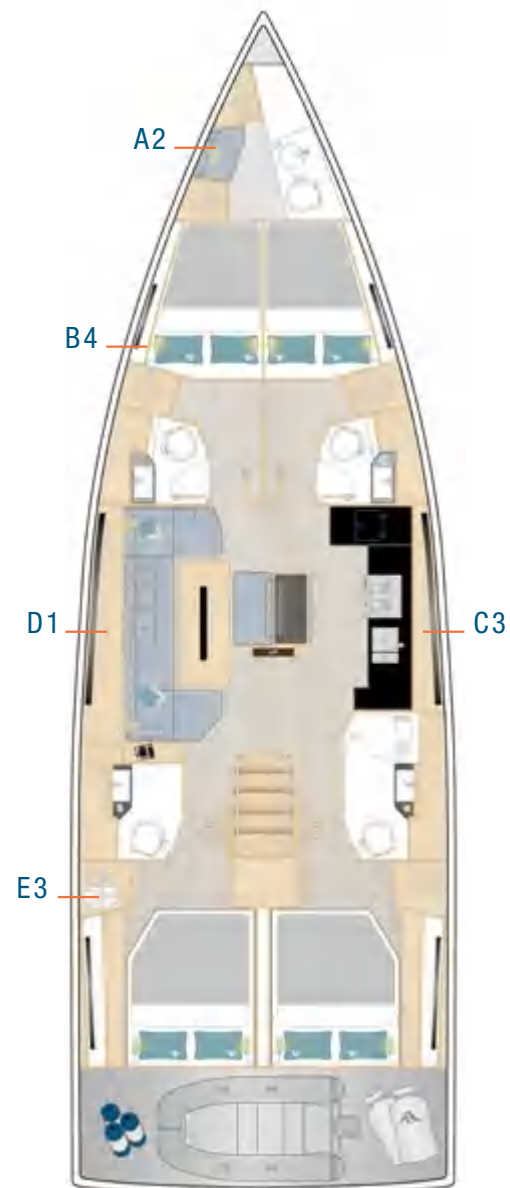
选配



选配



选配

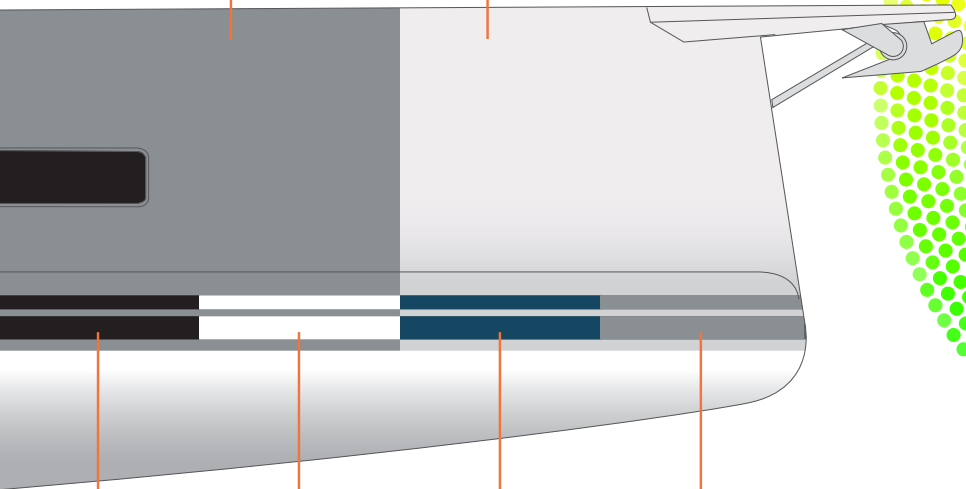


选配

灰色  
RAL 7040  
选配

白色  
RAL 9003  
标配

## 胶衣



黑色  
RAL 9011  
选配

白色  
RAL 9003  
选配

深蓝色  
RAL 5004  
选配

深灰色  
RAL 7043  
标配

## 烤漆

在汉斯，您可以选择各种不同的烤漆颜色。您的经销商将很乐意为您提供建议。

At Hanse, you can choose from a variety of different paint colours. Your dealer will be happy to advise you.

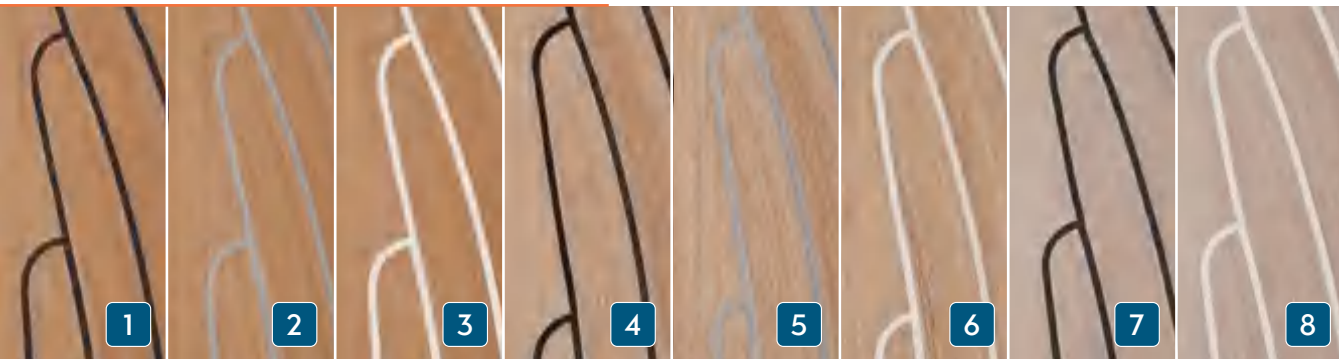
优质面漆  
酒红色  
选配



优质面漆  
驼色 | Beige  
选配

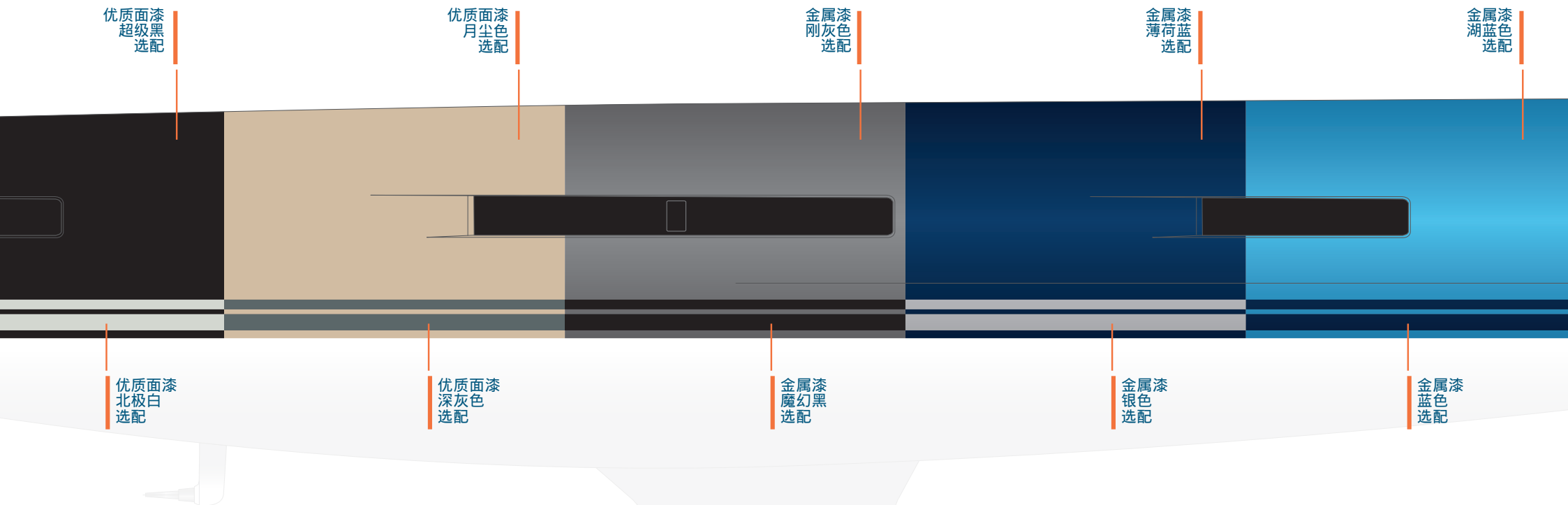
## 复合柚木

选配：1 经典柚木黑色 2 经典柚木灰色 3 经典柚木白色 4 磨砂柚木黑色 5 磨砂柚木灰色 6 磨砂柚木白色 7 蓝水柚木黑色 8 蓝水柚木白色



## 柚木 选配





## 船体&水线颜色

船体和水线颜色，胶衣或烤漆。在汉斯，您可以为您的新游艇选择您喜欢的颜色。

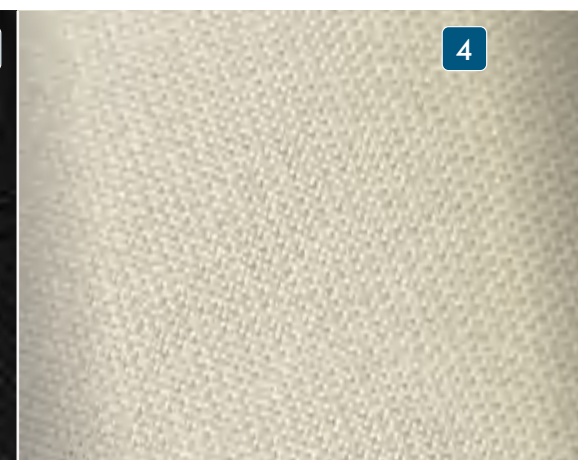
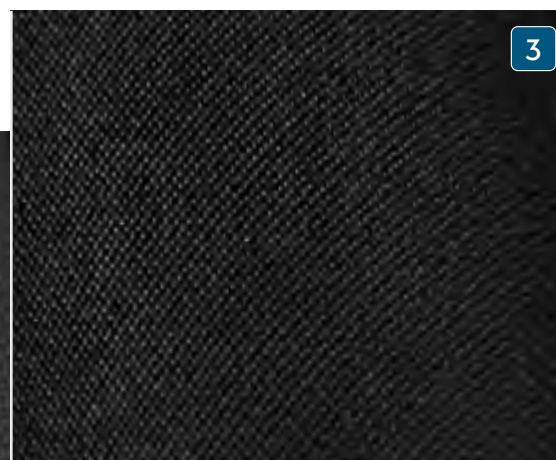
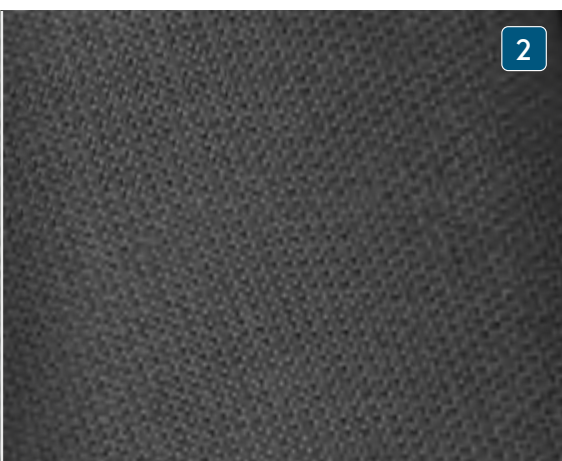
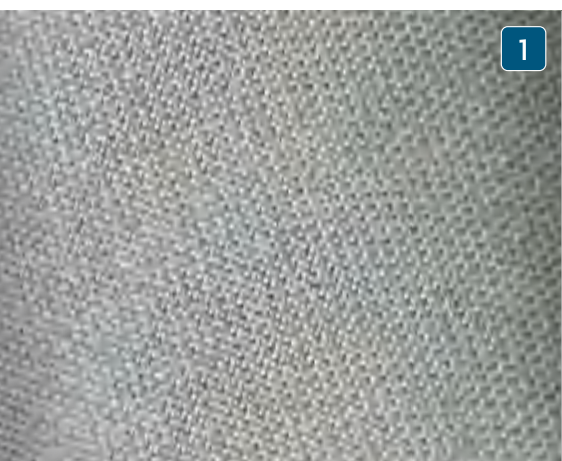
Hull and waterline colours, gelcoat or painted. At Hanse, you can select your favourite colour for your new yacht.

为您独特的个性打造独一无二的游艇。有眼光的行家选择汉斯，因为我们为您提供表达个人风格的机会。您可以发挥创造力，没有任何限制。我们的专家很乐意在选择完美的装饰方案上为您提供支持。

Your own individual yacht for your unique personality. Discerning connoisseurs sail Hanse, as we offer you the chance to express your personal style. There are no limits to how creative you can be. Our experts are happy to support you in choosing the perfect accents.

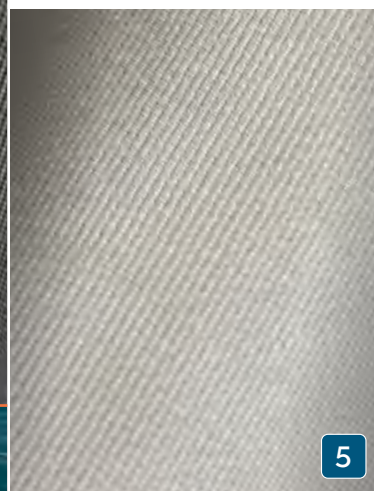
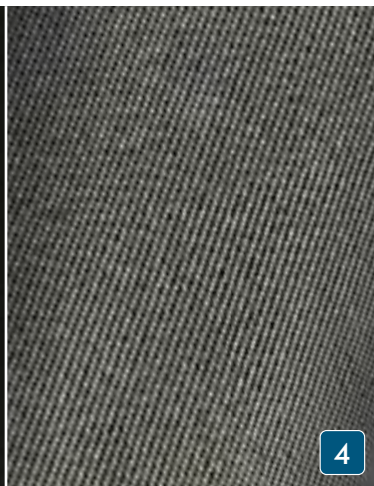
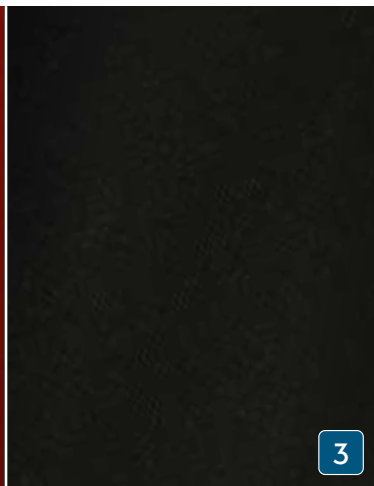


## 主帆布. 遮阳棚. 风挡. 罩子. 雨棚帆布&驾驶区帆布



选配：1 浅灰色 2 深灰色 3 黑色 4 奶白色

## 驾驶区座垫. 日光浴垫. 舵手座椅座垫. 水吧座垫

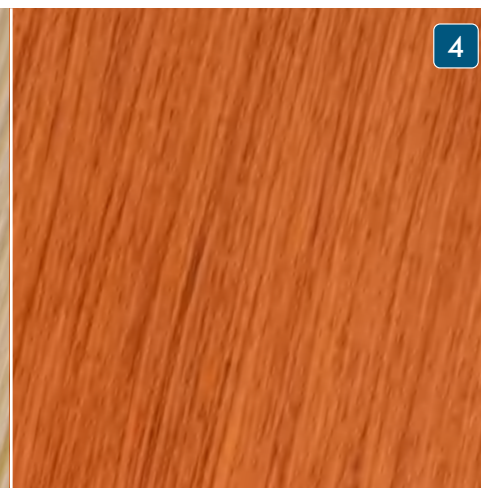
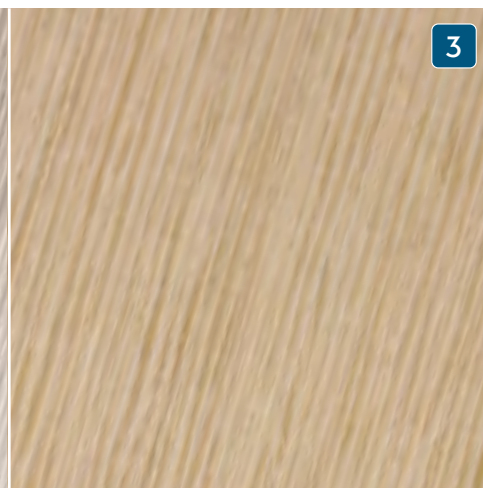
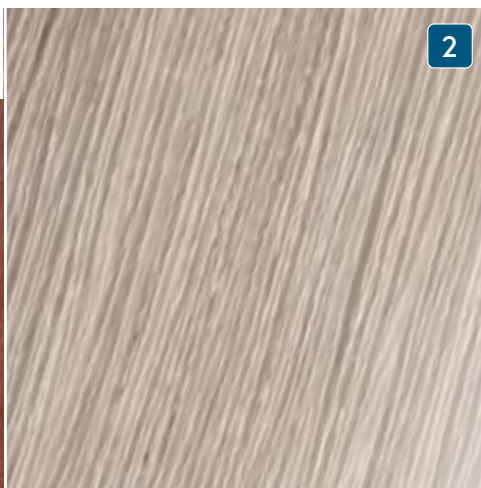
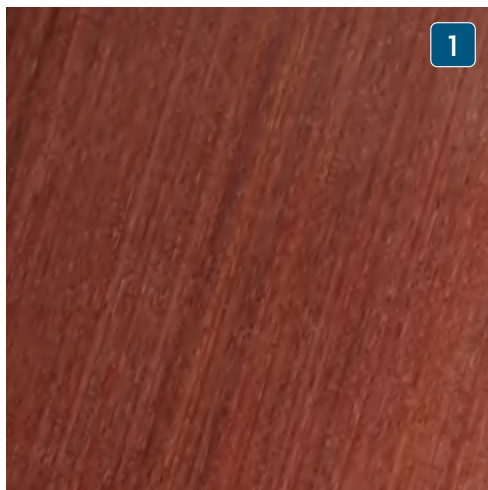


选配：

1 深蓝色 2 红色 3 黑色 4 深灰色 5 浅灰色 6 奶白色

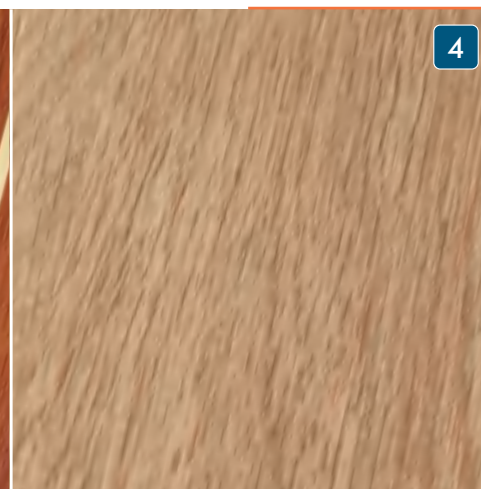
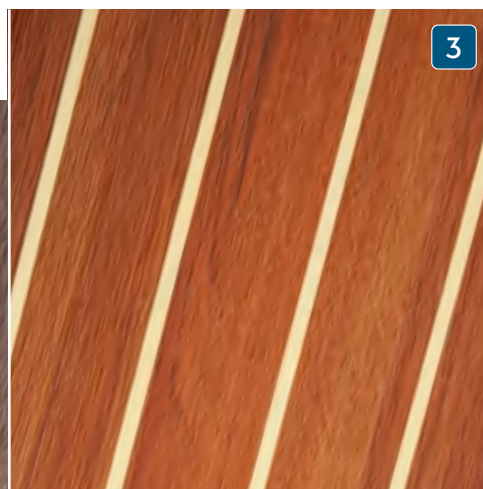
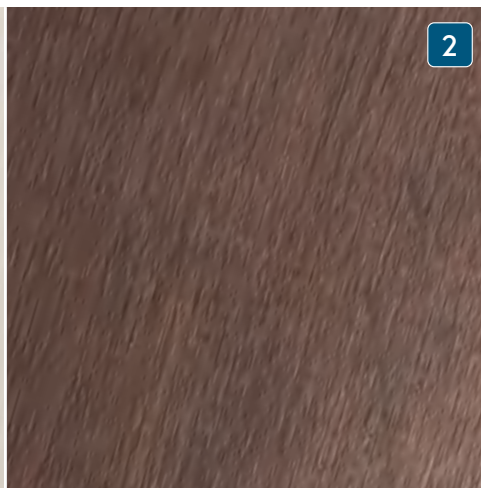
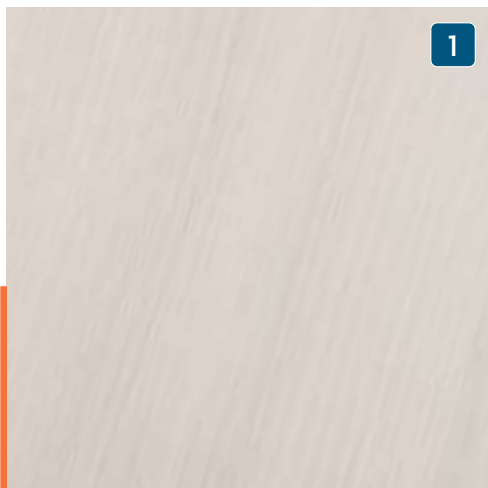
## 家具

ALPI 提供的海洋优化真木饰面。



标配: 1 红木清漆 · 选配: 2 加拿大栗木清漆 3 法国橡木 4 柚木

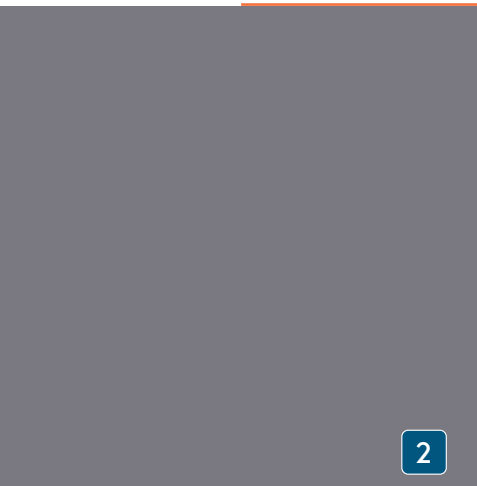
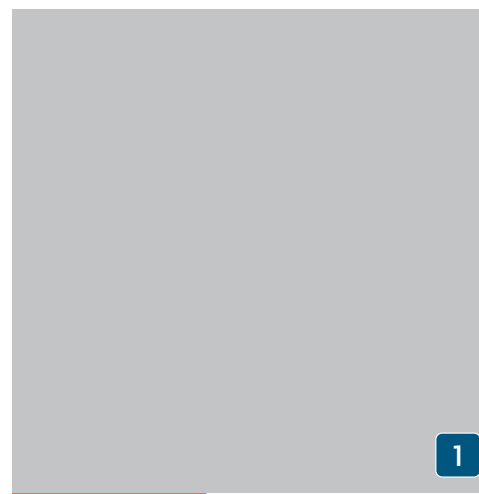
## 地板



标配: 1 合金欢 · 选配: 2 胡桃木 3 经典条纹 4 浅色橡木

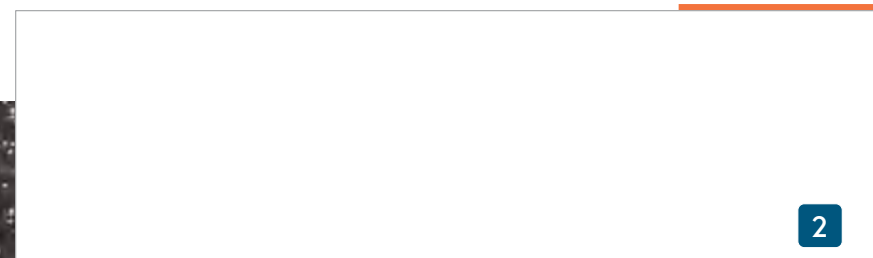
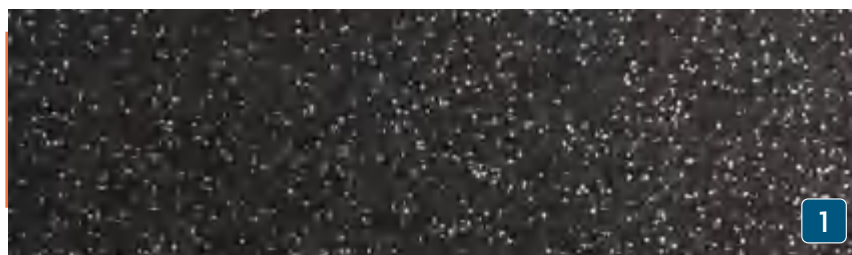


## 橱柜前板



选配：1 珍珠灰 2 海豚灰

## 厨房台面

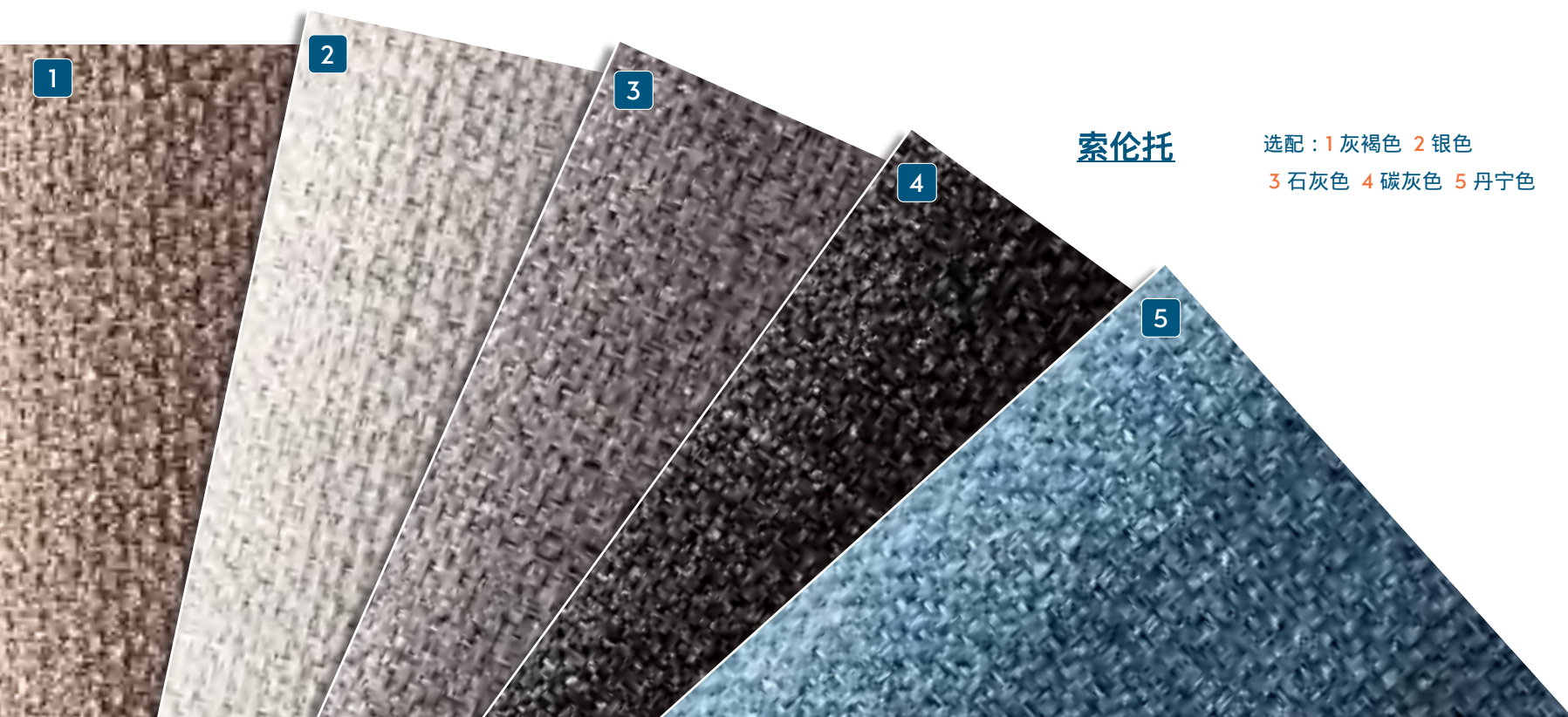


标配：1 黑色石英·选配：2 白色



### 波托菲诺皮革

选配：1 象牙色 2 石岩色 3 泥色 4 黏土色 5 巧克力色



### 索伦托

选配：1 灰褐色 2 银色  
3 石灰色 4 碳灰色 5 丹宁色

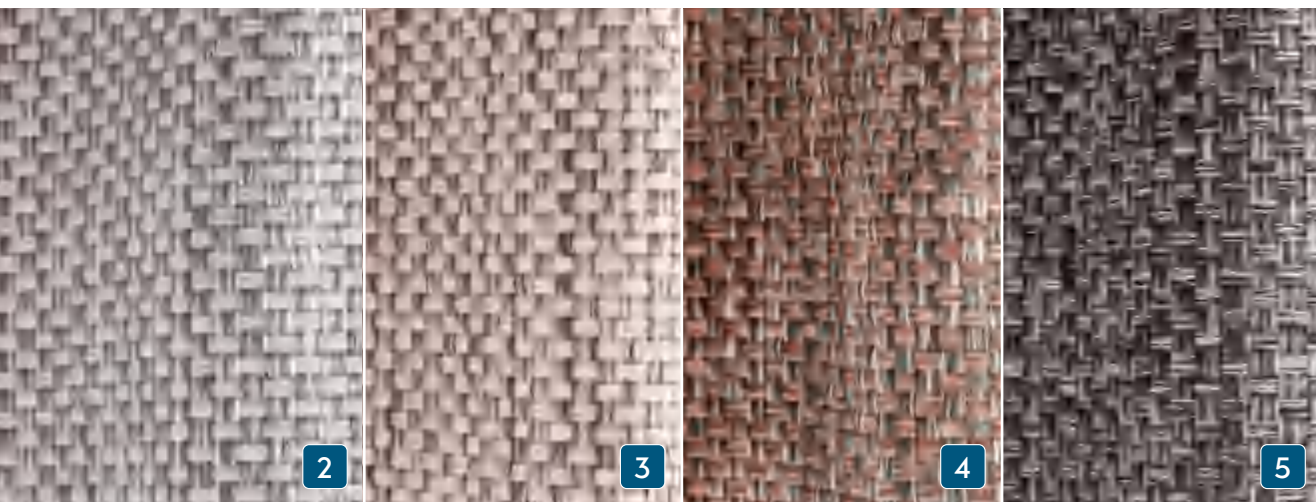






## 蒙地卡罗

标配：奶白色




## 摩纳哥

选配：1 杏仁色 2 青铜色 3 岩石色 4 黑松露 5 哈士奇

## 佛罗伦萨

选配：1 克里夫赛德 2 冰川色  
3 牡蛎色 4 麝香葡萄色  
5 石墨色



帆类型：**传统主帆**  
帆布材料：Elvstrøm SPS 可  
持续性能帆布  
布局：**三边形**  
特点：5个水平帆骨，2个  
缩帆  
点，修剪条纹

帆类型：**自动调整卷帆前帆**  
材料：Elvstrøm SPS 可持续性能帆布  
布局：**三角形**  
特点：4根短帆骨，修剪条纹，银色紫外线保护

SPS

TECHNOLOGY

可持续性能帆（SPS）：有了 Elvstrøm Sails，您可以选择使用主要由回收材料制成的帆布，从而发挥所选船帆布料的差异。这种高端层压帆布柔软且易于操作。

Sustainable Performance Sail (SPS): With Elvstrøm Sails, you have an option of making a difference by choosing a sail cloth made from mainly recycled materials. The high-end laminate sail is soft and easy to handle.

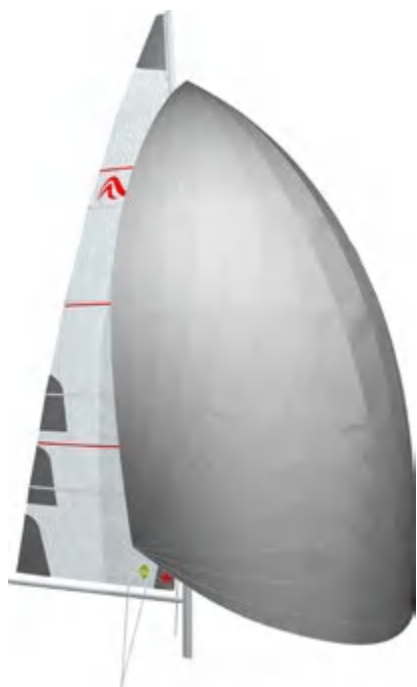


# SAILS

WIDE RANGE OF

所有帆系列都经过配置，为您提供安心。无论您是准备进行大型航行还是更倾向于熟悉的水域，您都将获得可靠耐用的帆配置。

The range of sails are all configured to give you peace of mind. Whether you are off for the big journey or prefer known waters, you will get a reliable and durable sail set-up.



帆类型：传统主帆  
帆布材料：Elvstrøm SPS 可  
持续  
性能帆布  
布局：三角形  
帆类型：球帆  
帆布材料：尼龙  
布局：三角形



帆类型：卷帆主帆  
帆布材料：Elvstrøm SPS 可持  
续性能帆布  
布局：三角形  
帆类型：Reacher（航向扩大  
型前帆）  
帆布材料：Elvstrøm SPS 可持  
续性能帆布  
布局：三角形

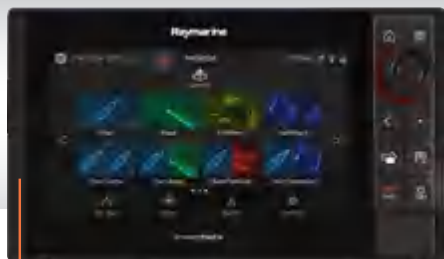


帆类型：传统主帆  
材料：Elvstrøm BlueWater Dacron 白  
色  
布局：交叉切割  
帆类型：Reacher（航向扩大型前  
帆）  
材料：Elvstrøm BlueWater Dacron 白  
色  
布局：交叉切割



帆类型：传统主帆  
材料：Elvstrøm Dacron 白色  
布局：交叉切割  
帆类型：自动调整卷帆前  
帆  
材料：Elvstrøm Dacron 白色  
布局：交叉切割

## RAYMARINE导航包



Raymarine AXIOM PRO 9 S海图仪，触屏多功能显示屏，位于右舷驾驶台。



Raymarine VHF Ray63，位于海图桌，包含无线遥控手持机。



2个Raymarine i70s多功能显示屏，驾驶台一边一个，包含传感器（风向、速度、深度、温度）



## 客厅电视包

客厅LED平板电视 | 客厅电视升降系统 | DVB-T2 电视天线



Raymarine Evolution 自动驾驶仪，带7英寸显示屏和无线遥控



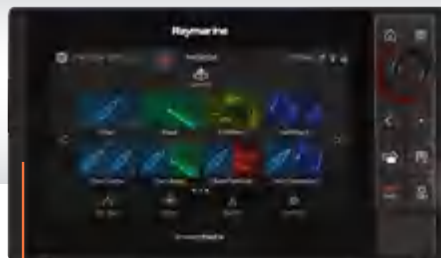
2个仪表架  
VHF预留，包括天线和用于FM和AIS的分频器。

- 驾驶台无线充电
- 无电缆、防水的无线充电
  - 单手操作
  - 手机保持在附近，方便在航行过程中使用
  - 多功能，可用于媒体播放，作为导航辅助或遥测功能



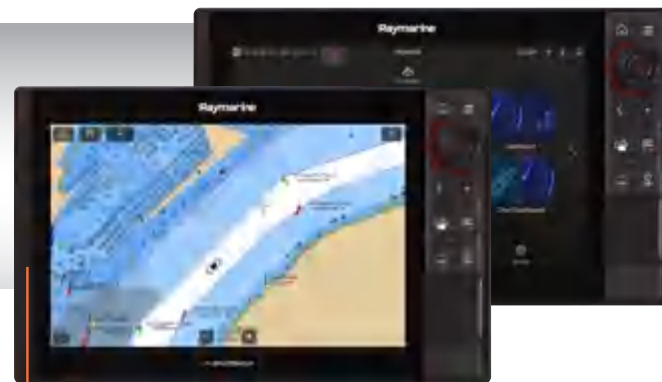
## 升级导航包

### 升级-第二海图仪



Raymarine AXIOM PRO 9 S 海图仪，触屏多功能显示屏，左舷驾驶台

### 升级-12寸海图仪



Raymarine AXIOM PRO 12 S 海图仪，触屏多功能显示屏，驾驶台一边一个

# XTRAS

MORE

510

Hanse的多样选择为您提供更多的自由 - 在空间和设计上。在这里，您会找到专为您的汉斯Hanse 510挑选的精选附加选项。

The variety of individual options at Hanse gives you more freedom – spatially and artistically.



1 两个驾驶座椅，可折叠 2 不锈钢梯子，可侧面进入，可折叠 3 驾驶舱桌，带柚木台面，电动可收放成躺椅 4 仪表板上的油门杆 5 两个GRP舵轮，Y形辐条（黑色或白色） 6 带有卷帆器的第二前支索 7 两个LEWMAR 55 EST EVO电动绞盘 8 游泳平台，可通过遥控自动展开，并带有游泳梯 9 复合材料船首斜桅，带有集成的锚和前支索配件，带有双滚筒，包括第二个支索和球帆眼



2



3



4



8



9

1 Two helm seats, foldable 2 Stainless steel ladders for side access, foldable 3 Cockpit table, with teak top, electrically retractable to a lying surface 4 Throttle lever on the instrument panel 5 Two GRP steering wheels, Y-spokes (black or white) 6 Second forestay with furling system 7 Two LEWMAR 55 EST EVO electrical sheet winches 8 Bathing platform, automatically folding out with remote control and bathing steps 9 Composite bowsprit with integrated anchor and forestay fitting with double roller incl. second forestay and gennaker eye



MADE IN  
**GERMANY**  
SINCE 1990





打破规则，引领潮流。对我们来说，这不仅仅是一个标语。这是我们对每艘成品游艇的承诺。您可以感受、体验和享受海里海里的承诺。

Breaking rules, setting trends. To us, this is more than just a catchphrase. It is a commitment we make a reality with each finished yacht. A commitment you can feel, experience and enjoy sea mile by sea mile. Discover more about this on the following pages.



BREAKING RULES

SETTING TRENDS

打破常规 引领潮流

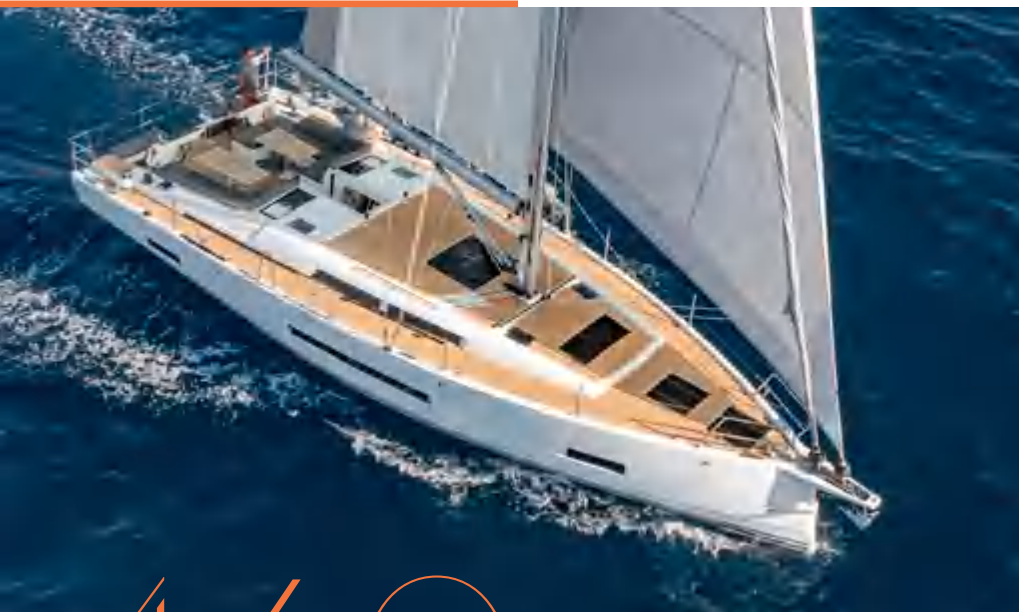
“引人注目的设计、创新功能和非常敏锐的定价相结合，使这个工厂成为一个真正的成功故事。”

Sailing Today Magazine

迄今为止，汉斯制造的游艇已获得超过 70 个国际奖项。

To date, yachts made by Hanse have won more than 70 international awards.

MORE  
THAN



460  
MILESTONE

Hanse 460 的推出标志着与Berret Racoupeau合作开发的新设计型号系列的开端。

“这一目标是开发一种新的风格，使其能够在未来的产品线中保持一定的永恒性。任务是将这种



Bei berühmten Regatten feiern Hanse Yachten immer wieder große Erfolge, z.B. auf der Atlantic Rally for Cruisers, der Copa del Ray oder der Nordseewoche.

Time and time again, Hanse yachts achieve great successes in legendary regattas such as the Atlantic Rally for Cruisers, the Copa del Ray or the Nordseewoche.

汉斯与世界知名的游艇设计师合作打造他们的游艇。  
我们的第一个联合开发立即成为经典：  
HANSE 371。

Hanse create their yachts in cooperation with world-renowned boat designers. Our first joint development became an instant classic: the Hanse 371.



全世界的航海爱好者都青睐汉斯帆船。  
世界第二大帆船制造商的国际经销商网络向70个国家提供服务。

All over the world, sailing enthusiasts favour Hanse yachts. The international dealer network of the world's second-largest sailing yacht manufacturer delivers to 70 countries.

“在世界的尽头，汉斯游艇与德国一样令人垂涎。”

Anthony Bishop | 澳大利亚经销商

The introduction of the Hanse 460 marks the beginning of a redesigned model range developed in cooperation with Berret Racoupeau.

新灵感的识别特征与历史DNA相融合。 ” Olivier Racoupeau | 游艇设计师



360  
DEGREES

舒适地从家中开始您最喜爱的Hanse游艇的个人导览，使用我们的 360 度全景图。花费您所需的所有时间，以引人入胜的细节发现每一个细节。尽情享受船舱下的航行体验。

Start your personal tour around your favourite Hanse comfortably from home with our 360 degree panoramas. Take all the time you need and discover every detail in captivating detail. Enjoy navigating below deck.



1,500  
OPTIONS

“您不会找到比 HANSE 更可定制的生产型游艇。”

Maxim Neumann | Hanse销售主管

得益于种类繁多的室内装潢、家具木材和地毯，我们提供了数以千计的个性化家具布置。像这样的广泛选择在市场上是独一无二的。

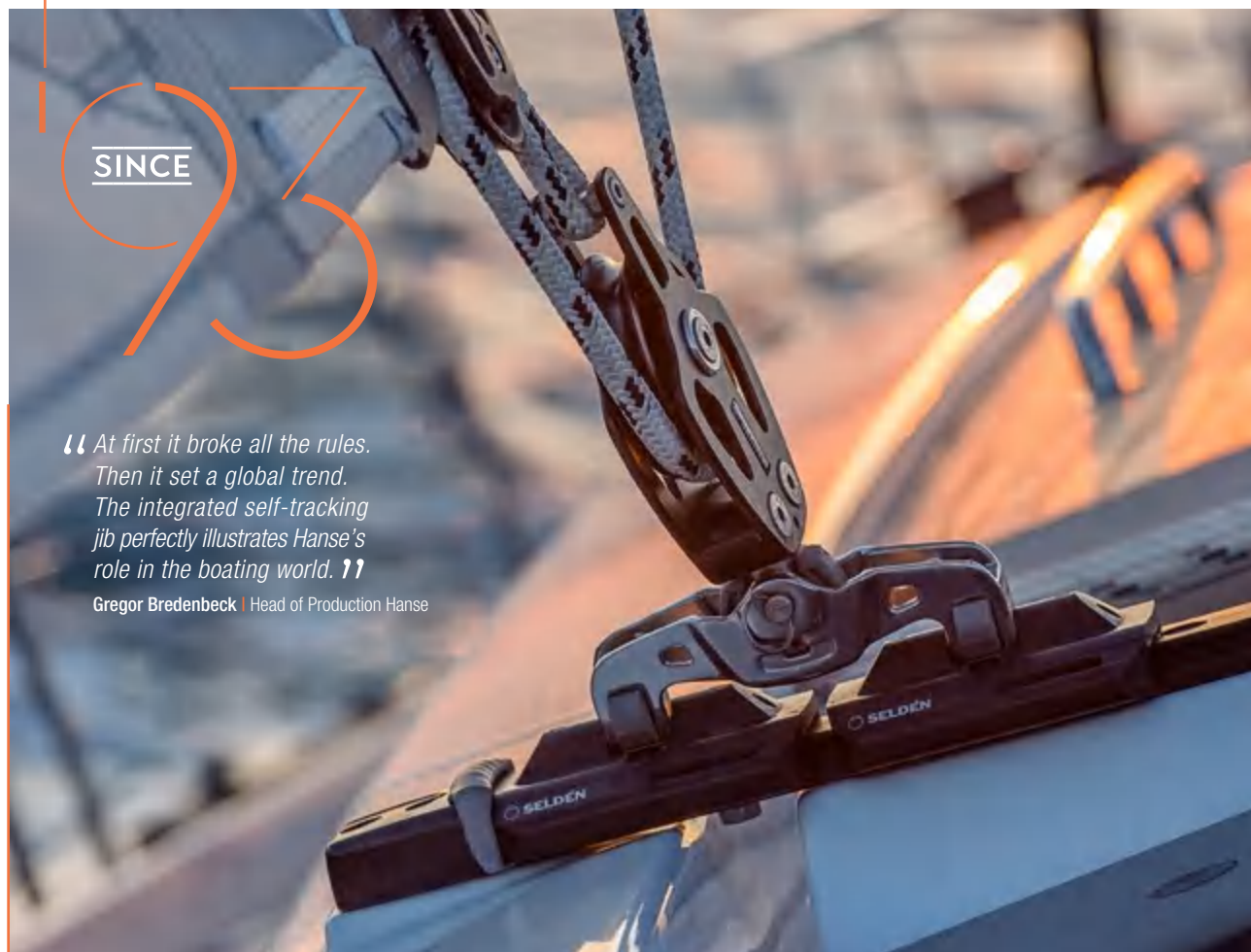
Thanks to the wide range of upholstery, furniture wood and carpets, we offer thousands of individual furnishing arrangements. A wide choice like this is unique in the market.

89



1990年代初，第一艘汉斯开始了造船业的革命。它采用了有史以来第一个批量生产的集成自前帆自动换舷系统。

In the early 1990s, the very first Hanse started a revolution in boat building. It featured the first integrated self-tracking jib ever produced in series.



SINCE

“ At first it broke all the rules.  
Then it set a global trend.  
The integrated self-tracking  
jib perfectly illustrates Hanse's  
role in the boating world. ”

Gregor Bredenbeck | Head of Production Hanse

在汉斯，890名专业的帆船爱好者携手并进。由尖端的生产工艺提供支持。完全致力于他们的职业。

At Hanse, 890 dedicated sailing enthusiasts work together hand in hand. Supported by cutting-edge production processes. Driven by total commitment to their profession.

“ 我们和我们的客户是志同道合的灵魂：没有什么比设计完美的帆船更让我们享受的了。 ”

Andreas Unger | 产品经理



HANSE YACHTS



Hanse游艇的每一个细节都令人印象深刻，是让您叹为观止的杰作。它们不仅仅是一个完美协调的设计和现代技术的集合。它们反映了汉斯工程师的经验和专业知识。他们对游艇的热情可以从每艘汉斯的无可挑剔的精确度和一丝不苟的细节中体现出来。

Impressive in every detail, Hanse yachts are masterpieces made to take your breath away. They are far more than a perfectly harmonised ensemble of design and the most modern technologies. They reflect the experience and know-how of Hanse engineers. Their passion for yachting can be felt in the unmistakable precision and meticulous detailing found in every Hanse.

HANSE  
ENGINEERING







## 龙骨船体连接

安全第一。龙骨板牢固地放置在由环氧树脂制成的超强基床中。这意味着龙骨直接锚定在强大的地板结构中。龙骨螺栓，包括垫片和螺母，均由不锈钢制成。

Safety first. The keel plates lie securely in an ultra-strong bed made of epoxy resin. This means that the keel is directly anchored in the powerful floor structure. The keel bolts, including discs and nuts, are made of stainless steel.



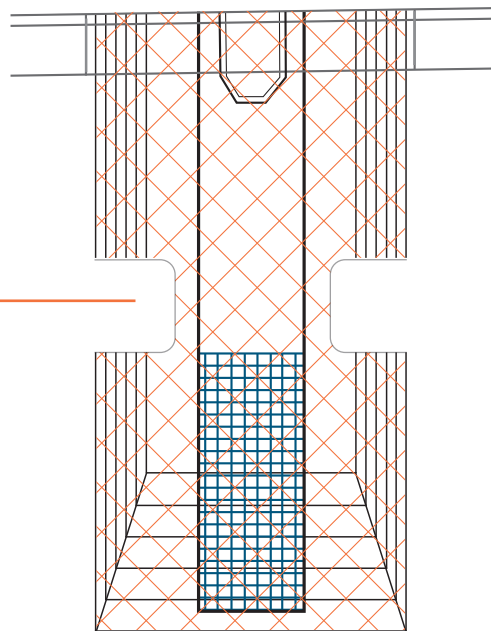
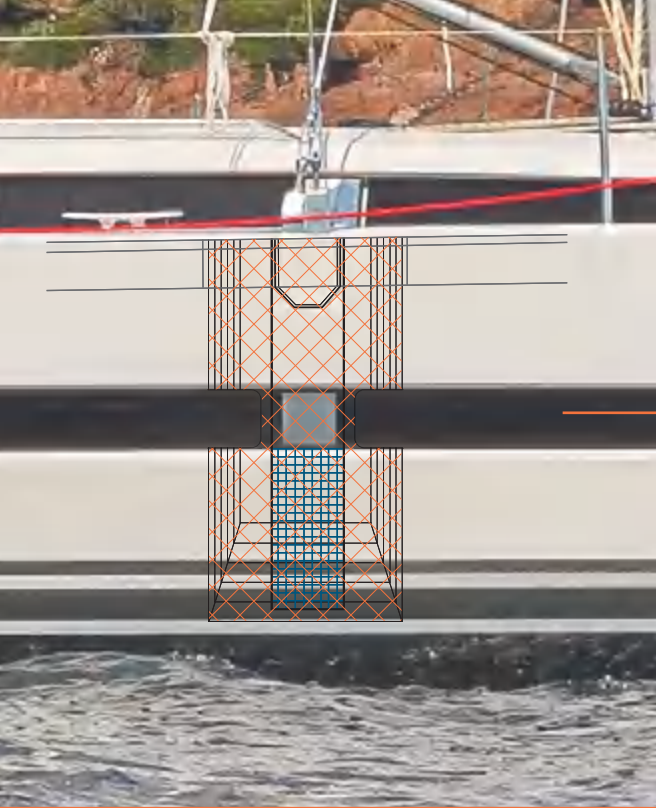
不锈钢螺栓  
甲板  
最佳配方性能胶水  
船体  
螺纹铝板

## 船体甲板连接

Hanse已经开发了一种特殊的船体-甲板连接，远远超出所有标准要求。除了使用高度耐用的聚酯粘合树脂外，甲板和船体还通过高强度的螺栓进行固定。这样做产生了一艘稳定、无扭曲、具有运动特性的帆船。

Hanse has developed a special hull-deck connection which goes well beyond all standard requirements. In addition to the use of highly robust polyester bonding resin, the deck and hull are anchored with the use of high-strength bolts in the cleats. This results in a stable, torsion-free yacht with a sporty character.





## 碳纤维加固链板

在您的汉斯游艇上，每一克都至关重要。这同样适用于超强的链板，其在需要强度的地方专门使用碳纤维进行加固。所有载荷都优雅地传递到船体中。这样，您在甲板下的休息区保持空旷，可以尽情享受海上生活。

No gram is too much in your Hanse. This also applies to the ultra-strong chain-plates, which are specifically reinforced with carbon where the strength is needed. All loads are transferred elegantly into the hull. Your lounge below deck remains free so you can enjoy life at sea.

## 三明治结构

Hanse 510采用高质量的三明治工艺进行构建。船体采用多层精选材料，每个细节都经过精确计算。它特别轻巧，并且由于外层使用了乙烯基酯材料，完全抵抗渗透现象。

The Hanse 510 is constructed using the high-quality, sandwich process. The hull features several layers of select materials and is precisely calculated in every detail. It is particularly lightweight and thanks to the exterior vinyl ester layer completely resistant to osmosis.

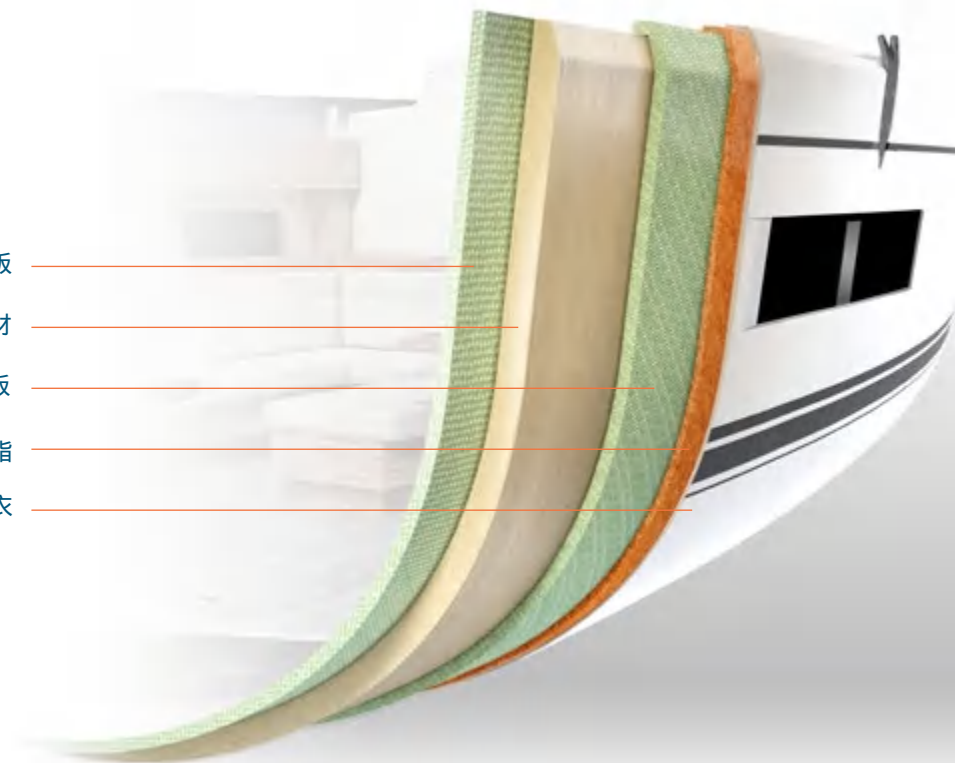
GRP层压板

芯材

GRP层压板

乙烯基酯树脂

胶衣





# 510 技术参数



船宽 4.91 m | 16'1"



总长 15.97 m | 52'5"

总长		15.97 m	52'5"
船体长		15.25 m	50'0"
水线长		14.50 m	47'7"
船宽		4.91 m	16'1"
吃水			
浅龙骨		1.98 m	6'6"
L型龙骨, 中等		2.43 m	8'0"
排水量			
浅龙骨	approx.	16.94 t	37,346 lb
L型龙骨, 中等	approx.	16.54 t	36,464 lb
发动机 (柴油)			
标配	approx.	80 PS	80 HP
选配	approx.	110 PS	110 HP
油箱	approx.	200 l	53 gal
淡水箱	approx.	450 l	119 gal
CE证书		A-12	
设计		Berret - Racoupeau	
内饰		Berret - Racoupeau	

---

水线以上桅杆高度	approx.	23.55 m	77'3"
上风帆面积	approx.	125.50 m <sup>2</sup>	1,350 sq ft
下风帆面积	approx.	272.00 m <sup>2</sup>	2,927 sq ft
主帆			
标配	approx.	66.00 m <sup>2</sup>	710 sq ft
卷帆	approx.	66.00 m <sup>2</sup>	710 sq ft
自动换舷前帆	approx.	53.00 m <sup>2</sup>	570 sq ft
大前帆	approx.	59.50 m <sup>2</sup>	640 sq ft
Reacher	approx.	94.00 m <sup>2</sup>	1,011 sq ft
球帆	approx.	206.00 m <sup>2</sup>	2,217 sq ft

以上尺寸仅供参考。参数和材质如有更改, 恕不另行通知。



## 传感器

监控您的充电水平和设备



## 开关控制

通过遥控器操作您的电子设备



## 报告问题

直接联系您的经销商以获得快速帮助



## 商店&配件

用于订购设备、用品和备件的功能



## 保险

Pantaenius 提供的独家应用内的所有船舶保险的报价



## 手册

一个应用程序中的所有手册和说明



## 警报

推送当前事件的通知



## 维护

在到期日之前推送通知以维护所有组件

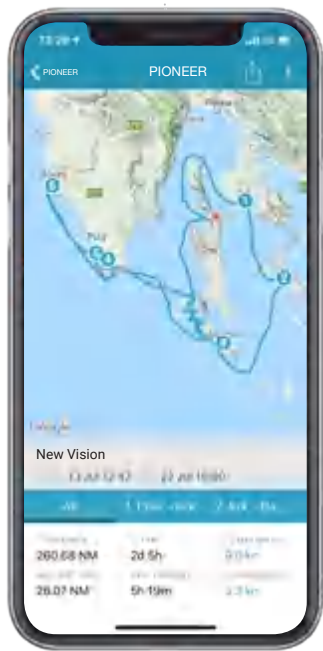


## 航程

与朋友分享您的航行和航程数据



WIRELESS MANAGEMENT



# MY HANSE SAFETY CLOUD

## 我的汉斯安全云智能系统

一切尽在掌握。使用我的汉斯安全云智能系统，您可以完全访问汉斯的所有重要数据。

随时随地。BoatMonitoring、eLogBook 和 eServiceBook 等智能应用程序可让您轻松舒适地监督您的游艇，自动更新日志并密切关注所有维护日期。

Everything under control. With the MyHanse Safety Cloud you gain full access to all important data of your Hanse. At any time and any place. Intelligent applications as BoatMonitoring, eLogBook and eServiceBook allow you to supervise your yacht easily and comfortably, to keep the logbook automatically up to date and to keep an eye on all maintenance dates.



## 3D呈现梦想

何不尽情放飞你的想象力呢？我们全新的配置工具以三维形式呈现你梦寐以求的Hanse，从各个角度都能看到。颜色、表面、龙骨变体 - 你可以一键改变它们，按照你的喜好随意转动船只，并从任意角度查看。一旦你对结果满意，只需再点击一次，你就可以订购你的新梦幻Hanse了。打开深色模式，仿佛你个性化的Hanse 410已经在码头等着你了。

How about indulging your fantasies? Our brand-new configurator presents your dream Hanse in three dimensions and from all perspectives. Colour, surfaces, keel variants - you can change them all with a click, turn the boat in whatever direction you fancy and inspect it from any angle. And once you're happy with the result, you can order your new dream Hanse with just one more click. Switch on dark mode and it actually looks like your personalised Hanse 410 is waiting for you in the marina already.



# YOUR HANSE

3D配置器

你更喜欢天蓝色还是橙色？尝试一下色调一致的座椅套或色彩点缀怎么样？是否需要额外的床位供家人或最好的朋友使用？配置工具允许你尝试不同的配置和材料，直到找到完美的组合。

Do you prefer sky blue or orange? How about tone-on-tone upholstery or colour accents? Do you need additional bunks for your family or for your best friends? The configurator allows you to experiment with different configurations and materials until you find the perfect combination.





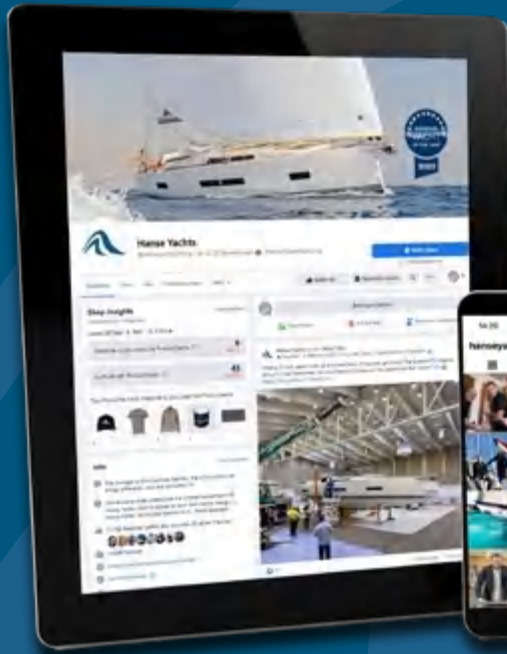


# VISION Realised



# SOCIAL MEDIA

FOLLOW US



This brochure is not contractual. The yachts depicted partly comprise special equipment not included in the standard scope of supply. Illustrations may not correspond with current versions. Subject to alterations in design and equipment without notice and errors excepted. Photos/Illustrations: HanseYachts AG, Nico Krauss, Jérôme Kelagopian, Peer Kolberg, Peter-Paul Reinmuth, Björn Willer, Berret-Racoupeau, Malwin Faber, Navico, B&G, Fusion, Elyström, Nico Martinez · Design: ULFSON design – ulfson.de and Thea Harksen – design-harksen.de