



460





# VISION

Redefined

打破规则。引领潮流。新的汉斯Hanse 460贯彻了汉斯的传统价值观，同时也标志着其型号开启了一个新而令人兴奋的时代。其彻底创新的设计是引领潮流的运动美学的表达。其帆具有卓越的性能配置。由经验丰富、注重性能的设计师创建，这艘游艇出奇地敏捷、快速且舒适。这将受到业主和客人的赞赏，当然也会受到那些总是想走在前沿的人的喜爱。有了新的汉斯Hanse 460，他们将无法忽视。

---

Breaking rules. Setting trends. The new Hanse 460 follows Hanse's traditional values through and through, yet also marks the beginning of a new, exciting era for its models. Its thoroughly innovative design is the expression of a trendsetting, sporty aesthetic. Its sails are configured for top performance. Created by experienced, performance-oriented designers, the yacht is surprisingly agile, fast and comfortable to sail. This will be appreciated by owners and guests alike, and of course by anyone who always wants to be ahead of the curve. With the new Hanse 460, they will be impossible to miss.

# INNOVATION

AT ITS BEST

## 引领新潮：全新定义的Hanse 460

- 全新的、超流线型的船体形状
- 全新的、超流线型的船体形状
- 平衡良好，异常稳定
- 高大的、运动型的桅杆，实现帆面最大化
- 标准的带有集成锚的船首斜桅
- 可选的第二个前支索，用于Reacher帆和球帆
- 是其类别中性能最佳的游艇之一

- 
- completely new, super hydrodynamic hull shape
  - lines optimised for performance
  - well balanced and extraordinarily stable
  - tall, sporty rig for a maximised sailplan
  - standard bowsprit with integrated anchor
  - optional second forestay for reacher and gennaker
  - one of the best-performing yachts in its class









在大海中感到宾至如归。法国世界级设计师 Berret-Racoupeau 独创的先进水动力学船体设计确保了卓越的平衡和稳定性。性能优化的水线与汉斯典型的运动感十足、高大的桅杆的完美结合，为航行提供了难忘的体验。

At home on the ocean. The progressive, hydrodynamic hull design from the pen of French world-class designer Berret-Racoupeau makes for extraordinary balance and stability. The combination of a performance-optimised waterline and Hanse's typically sporty and tall rig guarantees an unforgettable sailing experience.

# FAST

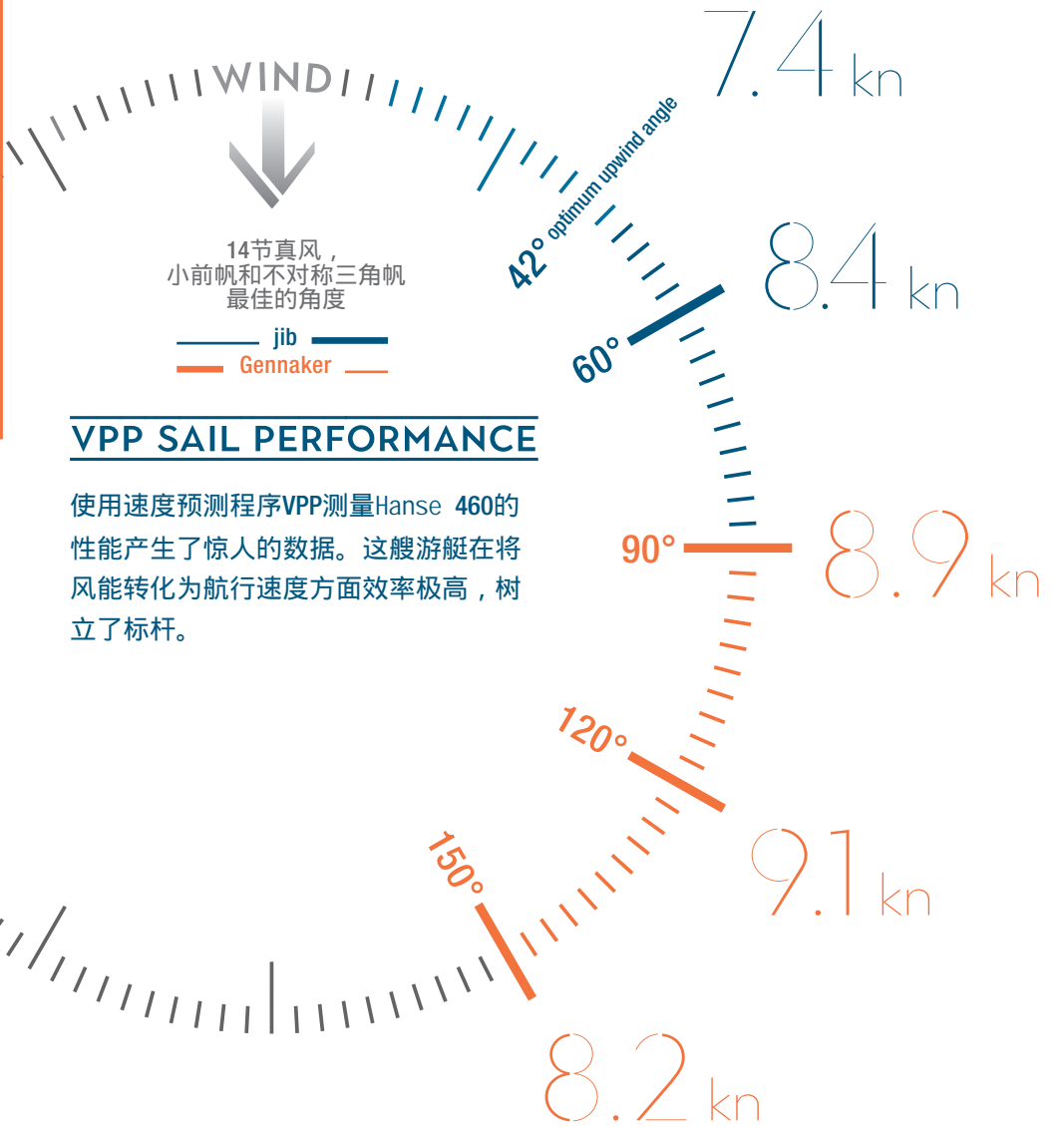
# 高速巡航



Feel the pleasure of

# COMFORT & SPEED





## TOTAL SAIL AREA

114 m<sup>2</sup>  
+ 170 m<sup>2</sup>  
GENNAKER

### 索具和风帆优化

高大的桅杆是每一艘Hanse的特点。Berret Racoupeau的游艇设计师通过使用高度复杂的计算模型，完美地为每艘Hanse设计帆布布局。这确保您在各种条件下都拥有最佳的航行特性，并确保您的Hanse是其类别中最快的游艇之一。

A high rig is the trademark of every Hanse. The yacht designers from Berret-Racoupeau & co perfectly form the sail plan for each Hanse with the use of highly sophisticated calculation models. This guarantees that you have the best sailing characteristics under all conditions, and it ensures your Hanse is one of the fastest yachts in its class.



## 高速巡航与轻松驾驶完美结合

汉斯460卓越的性能得益于其针对水流和水阻优化的船体设计。刺破波浪的特殊船头形状、纤细的水线和硬背槽确保了理想的水流，使得游艇在波浪中轻松滑行，并保持最大的浮力。

The outstanding performance of the Hanse 460 is made possible by its hull design optimised for current and water resistance. The special shape of the wave-piercing bow, the lean waterline and the hard chine, which ensure ideal water flow, allow the yacht to effortlessly glide through the waves with maximum buoyancy.



14.6 m <sup>LOA</sup> 4.8 m <sup>BEAM</sup> 2.25 m <sup>DRAFT</sup> 12.6 t <sup>DISPLACEMENT</sup>



## 汉斯智能调整系统

我们精心调整了帆布，使您能够像专业人士一样航行，并配置了可无缝调整的后支索，这使得桅杆和帆的轮廓能够始终完美地适应风力。

We have trimmed the sail so you can sail like a pro and included a backstay, which can be adjusted seamlessly. This enables the mast and the profile of the sail to perfectly adapt to the wind at all times.



Hanse轻松驾驶概念具有传奇色彩。我们发明了集成式自动调整前帆系统，并将所有索绳引导至驾驶位置。这意味着您可以独自航行您的船，或者在与客人共度时光的同时无忧无虑地航行。可以在掌舵上轻松完成收帆、升帆和起航。甲板没有绳索和配件，让您在海上或在港口放松时，提供无与伦比的舒适和空间。

The Hanse Easy Sailing Concept is legendary. We invented the integrated self-tacking jib and brought all the lines to the helm. This means you can sail your yacht on your own. Reefing, tacking and setting sail can all be performed from the helm without any effort. The deck is free of lines and fittings, giving you uncompromising comfort and space while you are at sea or relaxing in the harbour.

# EASY SAILING

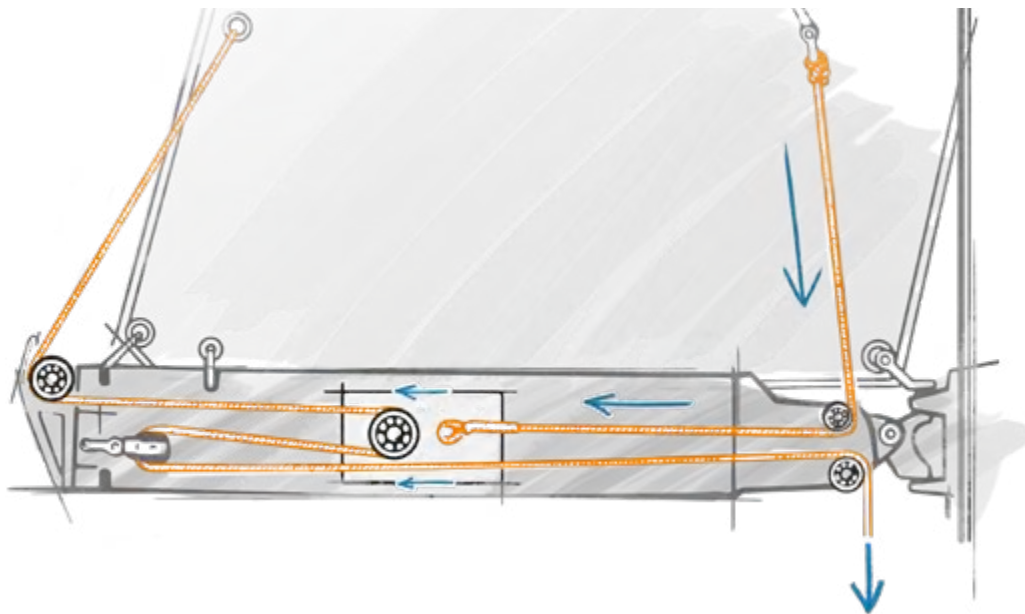
轻松驾驶





NEW VISION  
Greifswald

Hanse A



## 汉斯单绳收帆系统

您可以轻松从驾驶舱舒适的位置决定帆面积。汉斯单绳收帆系统确保您能够迅速而轻松地操作。

---

You decide the size of the sail area – easily from the comfort of the cockpit. The Hanse One-Rope Reef System ensures that handling is quick and effortless for you.



## 纯净的甲板和驾驶舱

清新而整洁。所有空间都采用极简主义设计，具有纯净而清晰的结构。我们甚至将绳索和索具优雅地隐藏在甲板下。

---

Clean and cool. All spaces feature a minimalist design, with a pure and clear structure. We have even hidden the halyards and sheets elegantly below the deck.





## 船首斜桅和主索的智能解决方案

始终获得最佳性能：通过脚杆上的两个前支索，您可以从驾驶舱方便地选择适合天气的正帆。为了实现最大化的帆面积并在操纵时更容易处理，Reacher帆和球帆的连接点已经移至前部。为了节省空间，主帆缭绳通过甲板上的两个固定点引导到舵轮，而不需要额外的滑车。主帆因此可以直接调整 - 船首斜桅和主索的智能解决方案这对独自航行的船员、小型船员或喜欢保持简单的人来说是完美的。

Always getting the best performance: with the two forestays on the bowsprit, you can conveniently choose the right headsail for the weather from the cockpit. The attachment points for reacher and gennaker have been moved forward to allow for maximised sail area and make for easier handling when manoeuvring. To save space, the main sheet is guided to the helm via two fixed points on the deck without an extra traveller. The mainsail can thus be trimmed directly – perfect for solo sailors, small crews, or just those who like to keep things simple.



## 前帆的灵活性

典型的汉斯自动换舷前帆与轻松航行同义。第二个前支索在轻松航行方面更上一层楼：不再需要交换帆，也不需要有人到前面去。只需保持航向，展开适合当前风力、天气和期望的航行体验的前支索。

---

The typical Hanse self-tacking jib is synonymous with relaxed sailing. The second forestay goes one better in terms of easy sailing: no more swapping sails, and no one has to go out in front. Simply stay on course and roll out the forestay that is best for the current wind, weather, and desired sailing experience.

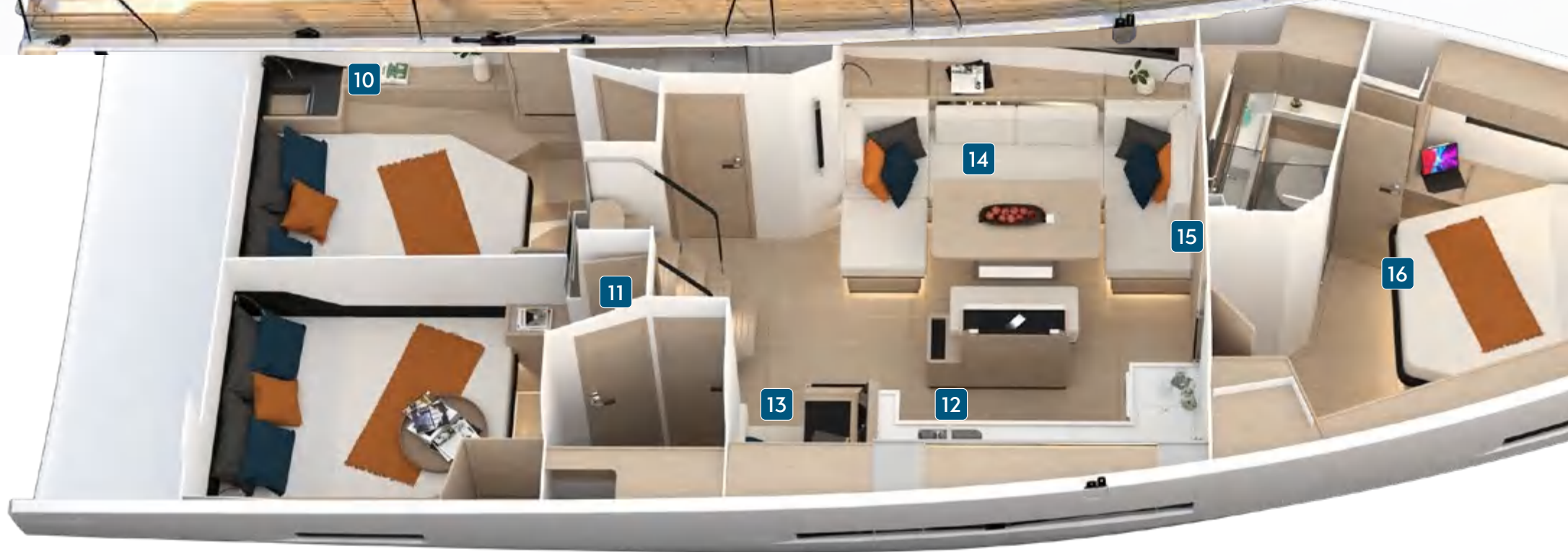


## 创新的驾驶舱技术

触摸按钮即可进行航行？在汉斯，您的梦想现在成为现实！从驾驶舱控制整个系统。所有绳索和索具也都通向驾驶站。这使您在所有航行操纵中拥有绝对的控制权。

Sailing at the touch of a button? With Hanse, your dream is now reality! Control the entire system from the cockpit. All the halyards and sheets also lead to the helm station. This gives you absolute control in all sailing manoeuvres.







# DESIGN

## 创新设计

### 外观&内饰设计亮点

1 折叠式柚木游泳平台 2 驾驶座椅，可选烧烤和洗手盆 3 双舵轮 4 人体工学导航仪支架 5 舷梯旁的实用储物空间 6 六个船体窗户 7 十三个可开启的甲板舱口 8 Hanse自动换舷前帆 9 前甲板天窗 10 宽敞明亮的艙舱 11 独特的新木材和装饰 12 宽敞、设备齐全的厨房 13 新开发的导航站作为控制中心 14 时尚的客厅，带有休息沙发、优雅可降低的客厅桌和电动可收放的大屏电视 15 高级木纹壁板 16 豪华的船东舱，带有特大岛型床、宏伟的大天窗和充足的存储空间

1 Folding teak bathing platform 2 Helmsman's seats with optional BBQ and washbasin 3 Twin helms 4 Ergonomic plotter pods 5 Practical storage space next to the companionway 6 Six hull windows 7 Thirteen openable deck hatches 8 Hanse self-tacking jib 9 Skylights in the foredeck 10 Bright, roomy aft cabins 11 Exclusive new wood and decor 12 Spacious, fully equipped galley 13 Newly developed navigation station as a control centre 14 Stylish saloon with lounge sofas, elegant, lowerable saloon table and electrically retractable flat-screen television 15 Premium, wood-look wall panelling 16 Luxurious owner's cabin with king-size island bed, magnificent large skylights and lots of storage space



## 创新的外观设计

拥有汉斯，您就拥有一艘引人注目的先进游艇。技术创新和每一个细节的高质量都是汉斯Hanse 460的重要组成部分，正如情感设计和舒适的舒适氛围一样。每一个细节都是卓越设计的微妙表达。先进技术及其集成的精心编排的整体是汉斯游艇设计的最高艺术 - 这正是驱使我们创造完美游艇的动力。

With Hanse, you have a progressive yacht that makes a statement. Technical innovations and quality in every detail are just as much part of the Hanse 460 as are an emotional design and comfortable atmosphere of well-being. Each detail is a subtle expression of superior design. The well-orchestrated ensemble of advanced technology and its integration is the highest art of yacht design at Hanse – and what drives us to create the perfect yacht.





汉斯460的绝对自由感是最棒的额外体验。1&2 通过集成的游泳梯，海洋只是一个短暂的步行距离。大型天窗和十三个可开启的甲板舱口将灿烂的阳光和清新的微风带入内部，创造出一个美妙的、令人愉悦的氛围。3 宽敞诱人的游泳平台将迅速成为您的最爱之地，无论是在海洋中降温，品味日落，还是让您的目光漫游在一片美丽的海湾上。

The feeling of absolute freedom is the best extra of the Hanse 460. 1&2 The ocean is just a short step away via the integrated bathing ladder. Large skylights and thirteen openable deck hatches bring radiant sunshine and a cool breeze into the interior and thus create a wonderful, feel-good atmosphere. 3 The invitingly wide bathing platform will quickly become your favourite place, whether it's to cool off in the ocean, to enjoy a sundowner, or to let your eye wander over a gorgeous bay.









每个人都有最佳的位置：1 宽敞的驾驶舱为整个船员提供了充足的放松空间，而驾驶员则有两个设备齐全的驾驶台，提供全方位无遮挡的视野。2 可降低的驾驶舱桌可以迅速改建成舒适宽敞的躺椅。3 智能储物：帆具被放置在需要的地方。4 引导到侧面和后方的索具和拉索也处于最佳位置，需要时立即可得。

Everyone has prime position: 1 The large cockpit offers the whole crew plenty of space to relax and the helmsman two fully equipped helm pedestals with an unobstructed all-round view. 2 The lowerable cockpit tables can quickly be repurposed into comfortably wide sun loungers. 3 Smart storage: the sail is kept where you need it. 4 The halyards and sheets directed to the side and to the rear are also in optimum position and immediately to hand when needed.







## 创新的内部设计

线条清晰：明亮、现代、宽敞。Hanse 460让您从第一刻就轻松感受到宾至如归的感觉。通风和照明概念是日光和可调光元素的智能结合。内部采用创新的、极简的设计语言，为创意和个性化造型提供了充足的空间。您可以找到所有的定制选项，为您的Hanse 460赋予个人化的独特风格。

The line is clear: bright, modern, spacious. The Hanse 460 makes it easy to feel at home from the first moment. The ventilation and lighting concept is an intelligent combination of sunlight and dimmable elements. The interior follows an innovative, minimalistic design language that provides plenty of space for ideas and individual styling. You can find all the customisation options to give your Hanse 460 your own personal touch in the back pages.



完全符合您的口味： 1现代、宽敞的厨房设备齐全，易于通风。宽敞的冰箱隔间可以拉出，方便填充。 2L形状创造了一个方便宽敞的工作空间。与高级室内几乎看不见融为一体的壁柜为您的所有器具提供了空间。

Entirely to your taste: 1 The modern, spacious galley is fully equipped and easy to ventilate. The roomy refrigerator compartment can be pulled out and comfortably filled. 2 The L-shape creates a conveniently large workspace. And the wall cupboards, which blend in almost invisibly with the premium interior, offer space for all your utensils.



辉煌之处在于巧妙的细节：1 将客厅变成家庭影院。大屏幕电视在按下按钮时出现。2 同样，只需轻轻一动手，您的休闲沙发的靠背就可以变成一个带有架子和实用瓶架的酒吧桌。酒吧就在直接后方方便到达。如果不需要酒吧和桌子，它们都会优雅地让自己不可见。无论是电影体验、欢乐的夜晚，还是简单的温馨聚会，Hanse 460的客厅都是各种娱乐的理想场所。

The brilliance is in the intelligent detail: 1 Transform your saloon into a home cinema. The flat-screen television appears at the push of a button. 2 Similarly, just a small movement of the hand turns the backrest of your lounge sofa into a bar table with a shelf and practical bottle holder. The bar is easy to reach directly behind. If the bar and table are not needed, they both elegantly make themselves unseen. A cinema experience, a convivial evening, or simply a cosy get-together – the saloon of the Hanse 460 is the ideal place for every kind of entertainment.







设备齐全：1 导航站离甲板不远。扶手确保您的安全。所有导航设备整齐排列，海图巧妙地组织在它们的隔间中。当不进行导航时，这个空间理想地适用于作为一处船上办公室。白天照明和导航灯的定期闪烁意味着即使在较长的工作时间内，您也不会感到疲劳。2 面板和船上电子设备巧妙地消失在色彩协调的柜子中。

Well equipped: 1 The navigation station is a short distance from the deck. A handrail ensures your safety. All navigation devices are lined up neatly, the nautical charts cleverly organised in their compartment. When not navigating, the space is ideally suited as a boat office. Illumination with daylight and the periodic shine of the navigation light mean that you won't get tired even during longer work sessions. 2 Panels and on-board electronics disappear discreetly into colour-coordinated cabinets.



个人的天堂：1 优雅、简洁的设计，充足的存储空间和高质量的材料，如木材和石材 - 带有自然采光的船东浴室就像您自己的水疗中心。 2 客厅宽敞、通风的感觉在前甲板上得到体现，为那里提供了同样温馨宜人的氛围。 3 舒适的休息区是一个诱人的休息场所。它由白天光和间接照明的最佳组合照亮。

A personal paradise: 1 Elegant, uncluttered design, plenty of storage space and high-quality materials such as wood and stone – the owner's bathroom with natural daylight is like your very own spa. 2 The spacious, airy feeling of the saloon is reflected in the foredeck, where it provides the same wonderfully homely atmosphere. 3 A cosy seating area is an inviting space to take a break. It is lit by an optimum combination of daylight and indirect lighting.





暂时将甲板上的原始兴奋留给一会儿，享受撤离到这个极为舒适的主舱室的宁静。提供纯粹的宁静和舒适的绿洲，这个舱室配备有一间设计师浴室、优雅的岛型床、宽敞的搁板和储物空间，以及通过广泛的天窗和船体窗户欣赏美妙景色的机会。

Leave the raw excitement up on deck for a moment and enjoy withdrawing into the peace and quiet of this supremely comfortable master cabin. Offering a pure oasis of calm and comfort, the cabin is fully equipped with an ensuite designer bathroom, an elegant island bed, generous shelving and stowage space, as well as fantastic views through extensive skylights and hull windows.



您的客人将一无所缺。在两个船尾舱内，他们可以期待着一个舒适的双人床，俯瞰着壮丽的海洋景色。舱室足够高，可以站立，并提供充足的个人物品存储空间。

Your guests will want for nothing. In the two aft cabins, they can expect a comfortable double berth with a magnificent view of the ocean. The cabins are tall enough to stand in and provide plenty of storage space for personal belongings.



浴室遵循新Hanse 460的特殊舒适概念：1触感愉悦的高质量材料吸引着感官。大面积镜面门后的实用存储空间提供了清晰和有序。2浴室设有一个独立的淋浴间，足够宽敞，可以轻松站立。可打开的窗户允许湿气散发，确保良好的空气质量。



The bathroom adheres to the special comfort concept of the new Hanse 460: 1 High-quality materials that are pleasing to the touch appeal to the senses. Practical storage space behind large, mirrored doors provides clarity and order. 2 The bathroom has a separate shower with enough room to stand up comfortably. The openable window allows moisture to escape and ensures good air quality.





无论您航行到哪里 - 您的汉斯都是独一无二的。您可以选择船体的颜色以及吸引您目光的座椅套色。在甲板上，决定在您的Hanse游艇上包括哪些技术设备完全取决于您。内部也承载着您的个性。在现代的阁楼氛围中或被海洋的优雅环绕中享受在海上的自由。高质量的材料和独家的配件等待着您。

Wherever you sail – your Hanse is one of a kind. You choose the colour of the hull and which upholstery you would like to catch your eye. On deck, the decision of which technical equipment to include on your Hanse yacht is all yours. The interior also carries your signature. Enjoy the freedom at sea in a modern loft atmosphere or surrounded by maritime elegance. High-quality materials and exclusive fittings await you.



# INDIVIDUAL

CUSTOMISATION 个性定制 从460



## 个性化舱室概念

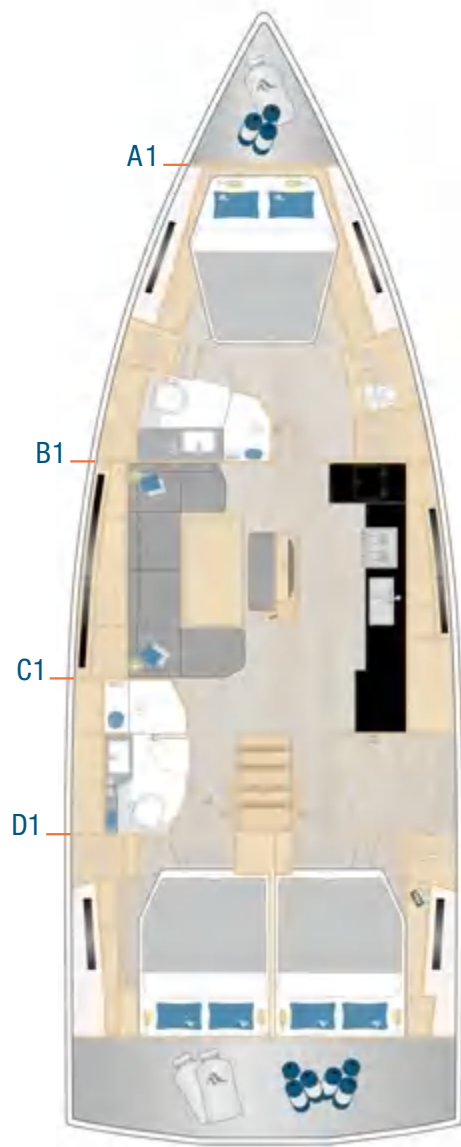
您是喜欢与另一半、家人还是朋友一同航行呢？我们可以根据您的需求个性化定制您的 Hanse 460 的布局。选择适合您的定制和布局选项，无论是另一个浴室，一个可容纳四人的前舱，还是船东舱内的第二个大衣柜。

---

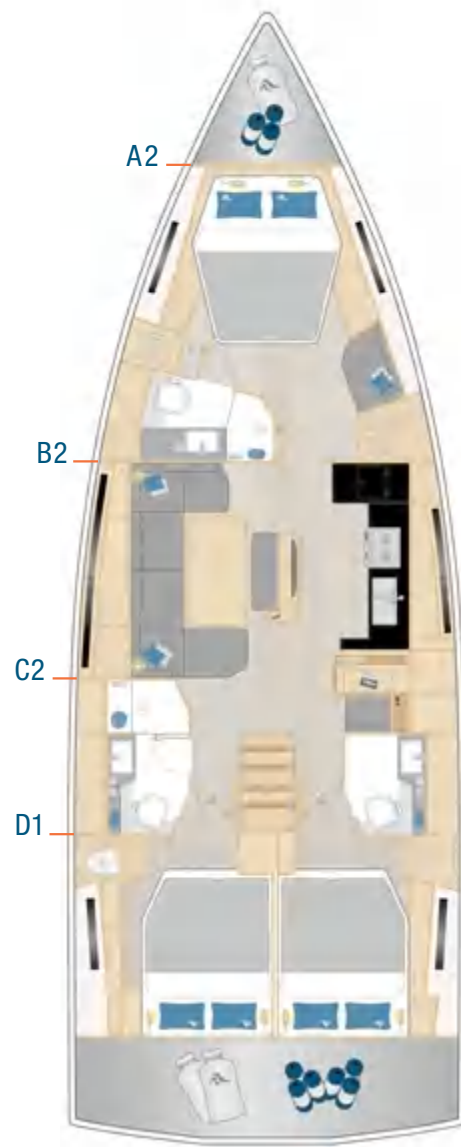
Do you prefer to sail as a couple, with your family or with friends? We can individually tailor the layout of your Hanse 460 to your needs. Choose the customisation and layout options that are right for you, be it another bathroom, a foreship for four individuals or a second large closet in the owner's cabin.



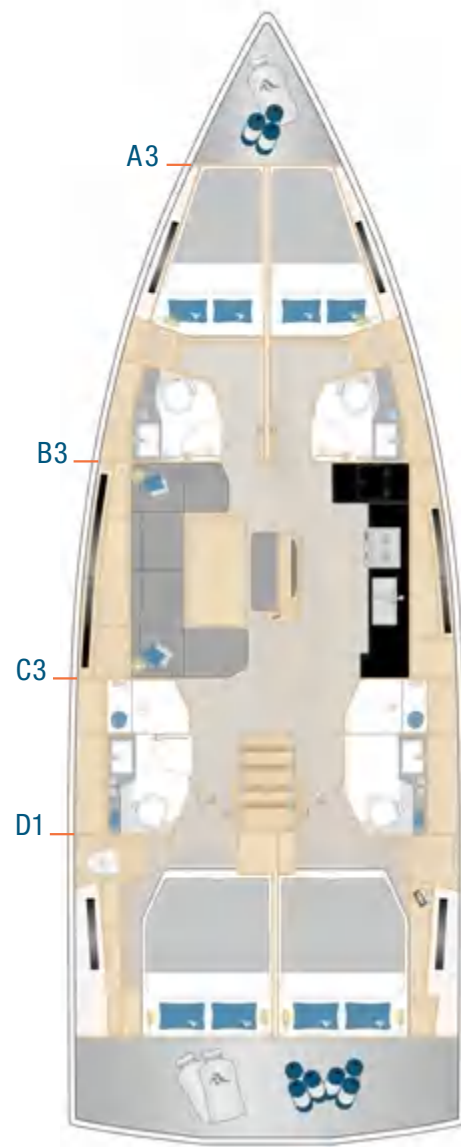




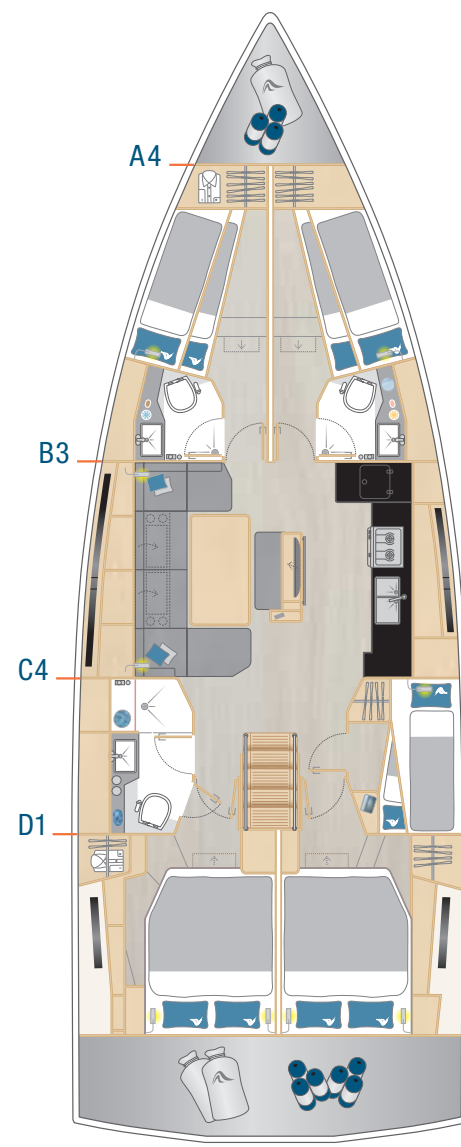
标配



选配



选配

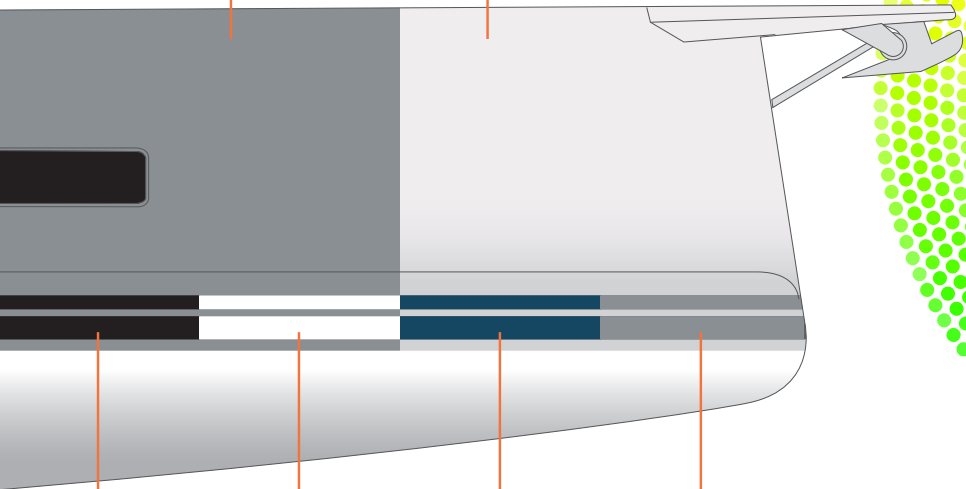


选配

灰色  
RAL 7040  
选配

白色  
RAL 9003  
标配

## 胶衣



黑色  
RAL 9011  
选配

白色  
RAL 9003  
选配

深蓝色  
RAL 5004  
选配

深灰色  
RAL 7043  
标配

## 烤漆

在汉斯，您可以选择各种不同的烤漆颜色。您的经销商将很乐意为您提供建议。

At Hanse, you can choose from a variety of different paint colours. Your dealer will be happy to advise you.

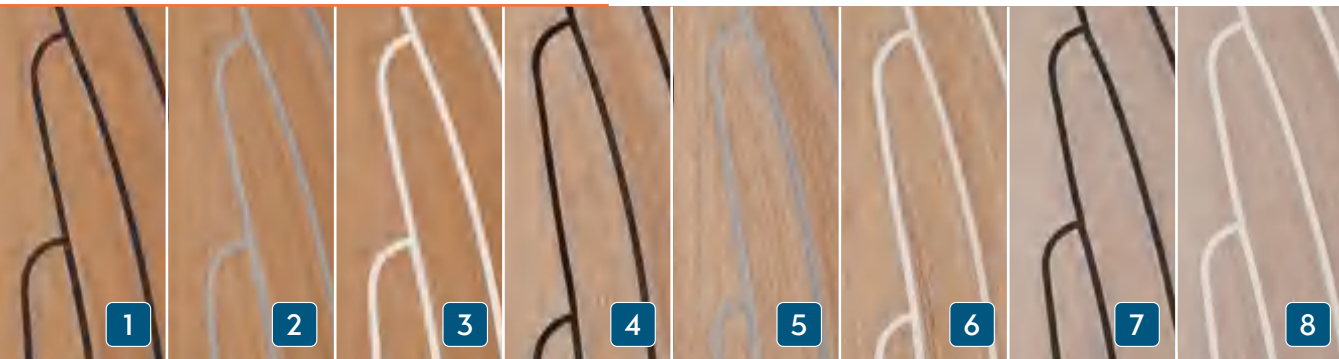
优质面漆  
酒红色  
选配



优质面漆  
驼色 | Beige  
选配

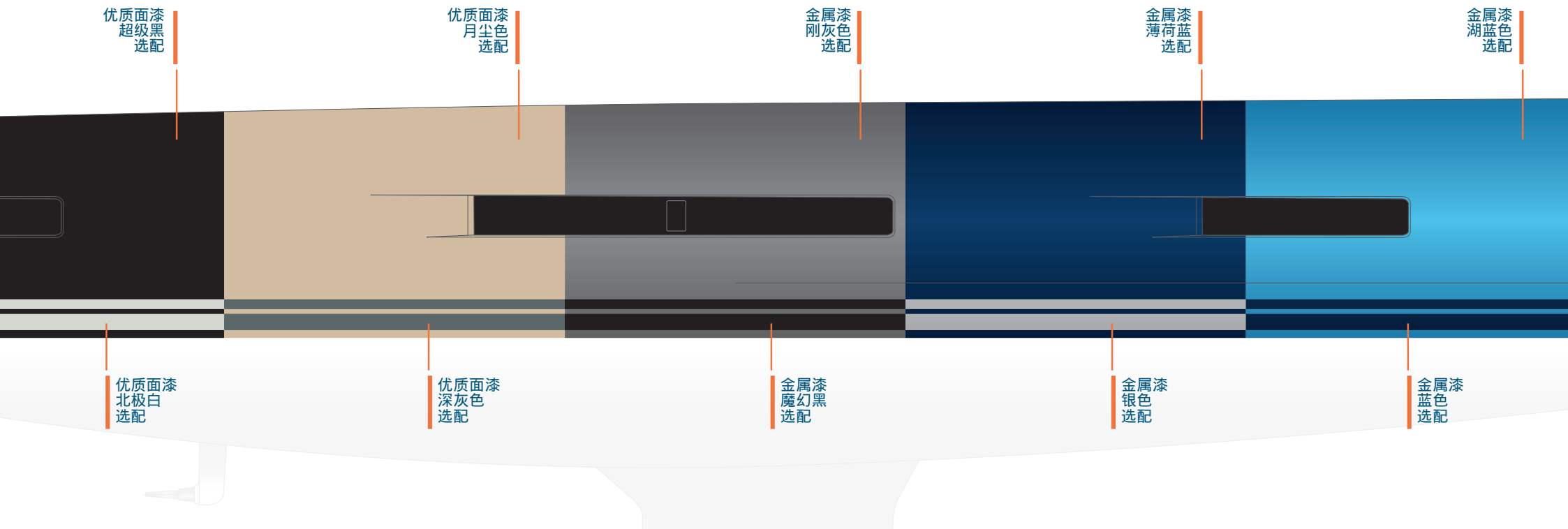
## 复合柚木

选配：1 经典柚木黑色 2 经典柚木灰色 3 经典柚木白色 4 磨砂柚木黑色 5 磨砂柚木灰色 6 磨砂柚木白色 7 蓝水柚木黑色 8 蓝水柚木白色



## 柚木 选配





## 船体&水线颜色

船体和水线颜色，胶衣或烤漆。在汉斯，您可以为您的新游艇选择您喜欢的颜色。

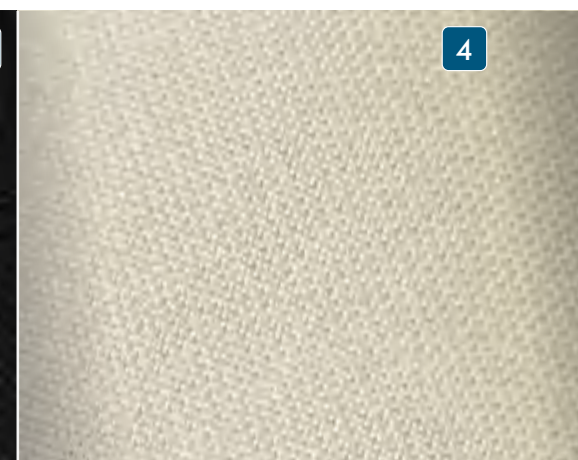
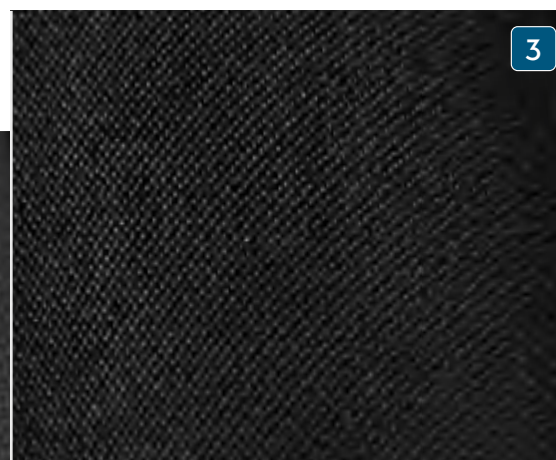
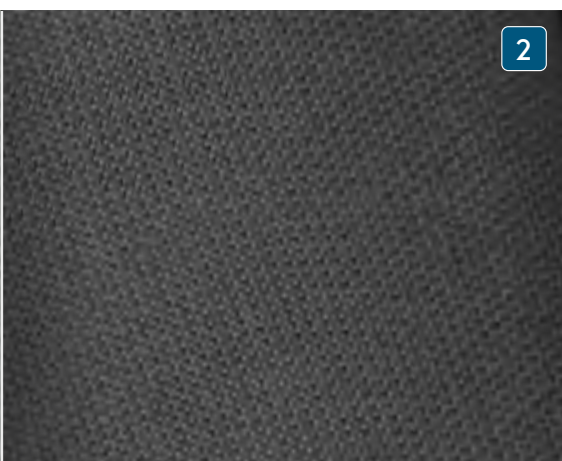
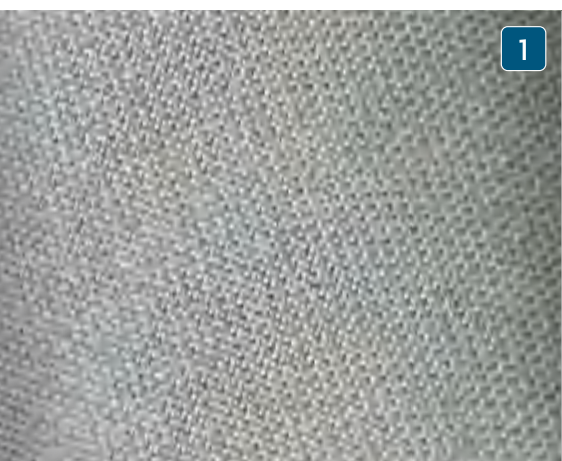
Hull and waterline colours, gelcoat or painted. At Hanse, you can select your favourite colour for your new yacht.

为您独特的个性打造独一无二的游艇。有眼光的行家选择汉斯，因为我们为您提供表达个人风格的机会。您可以发挥创造力，没有任何限制。我们的专家很乐意在选择完美的装饰方案上为您提供支持。

Your own individual yacht for your unique personality. Discerning connoisseurs sail Hanse, as we offer you the chance to express your personal style. There are no limits to how creative you can be. Our experts are happy to support you in choosing the perfect accents.

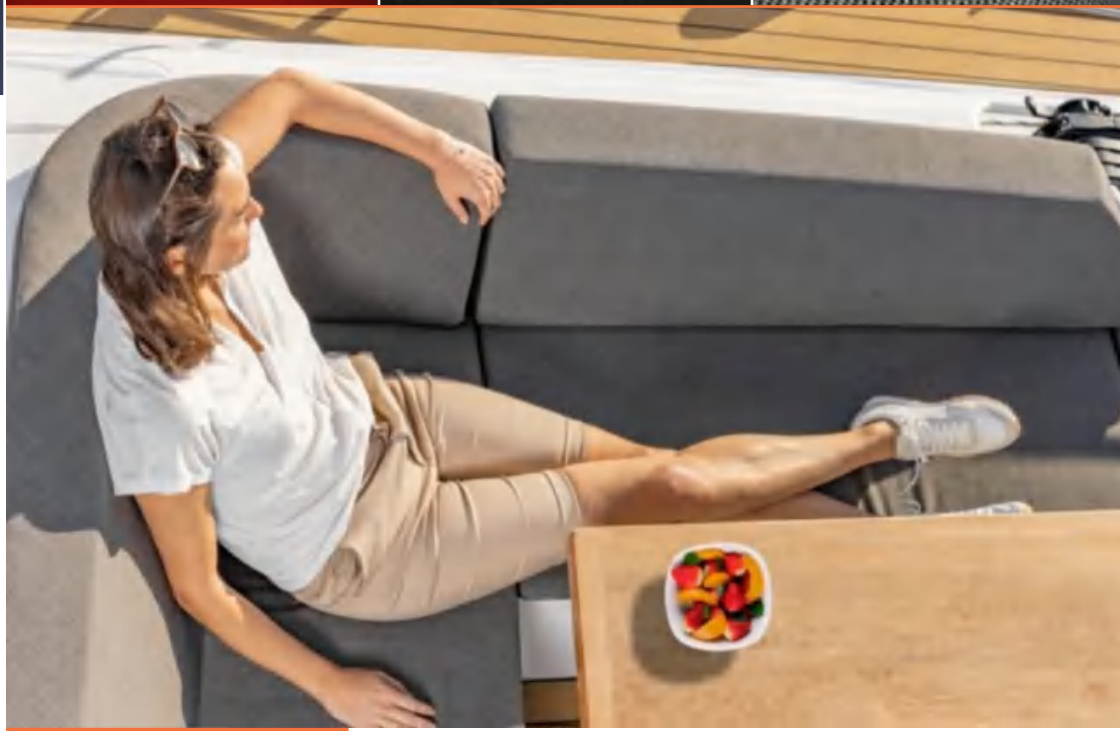
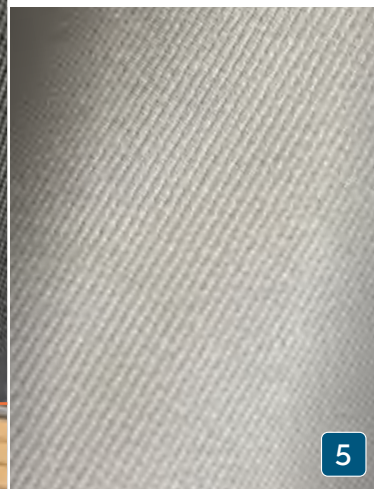
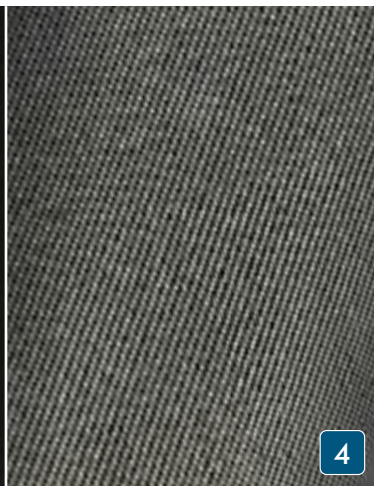
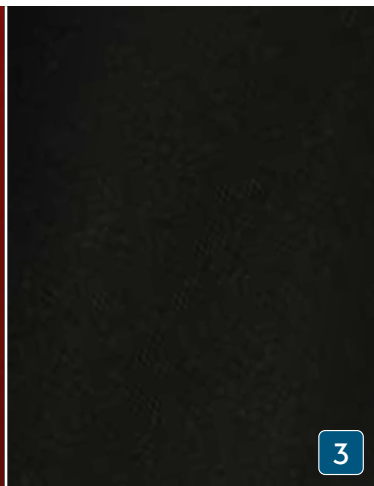


## 主帆布. 遮阳棚. 风挡. 罩子. 雨棚帆布&驾驶区帆布



选配：1 浅灰色 2 深灰色 3 黑色 4 奶白色

# 驾驶区座垫. 日光浴垫. 舵手座椅座垫. 水吧座垫

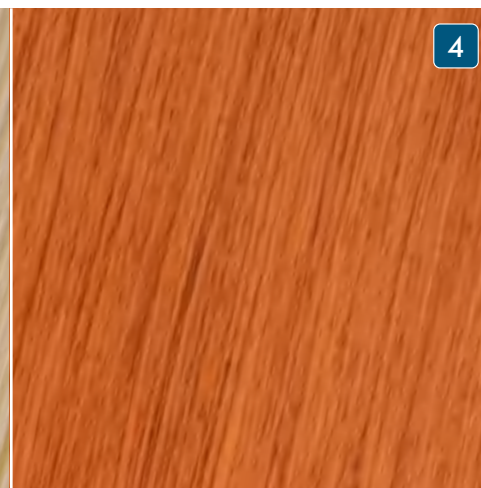
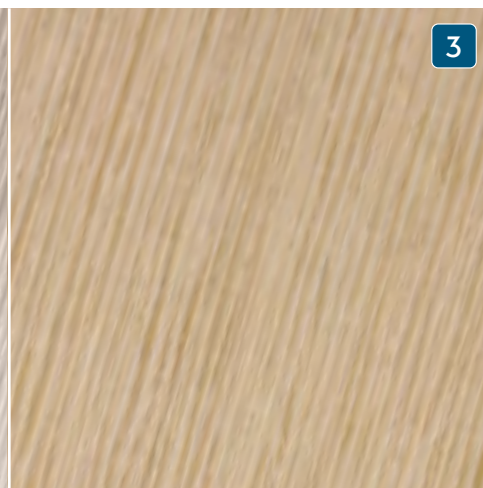
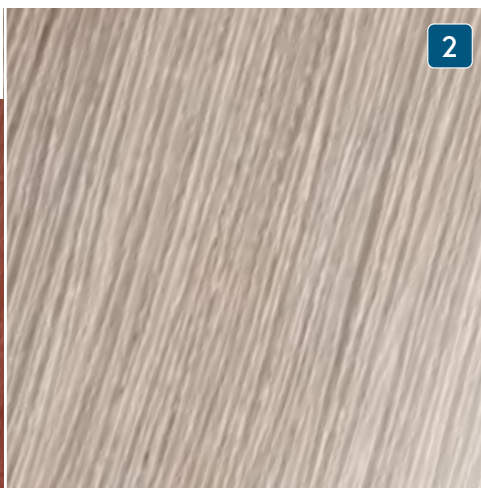
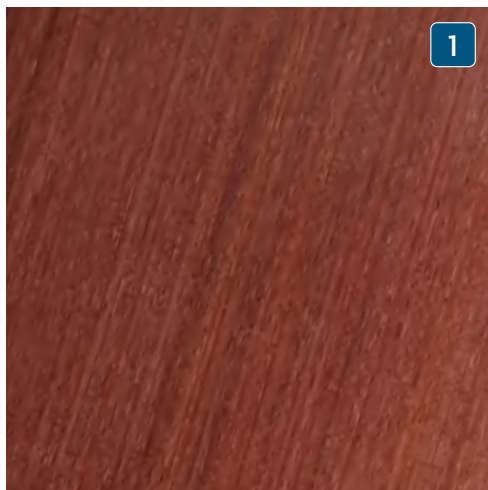


选配：

1 深蓝色 2 红色 3 黑色 4 深灰色 5 浅灰色 6 奶白色

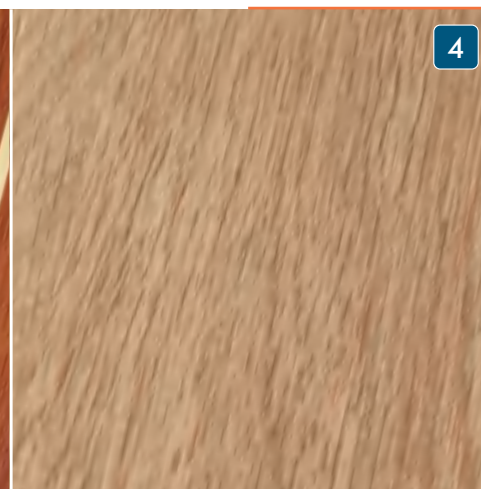
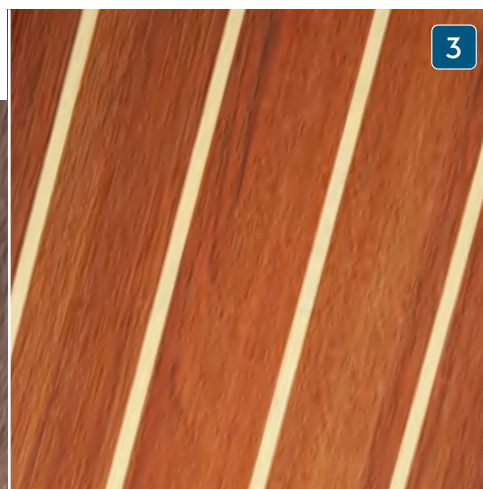
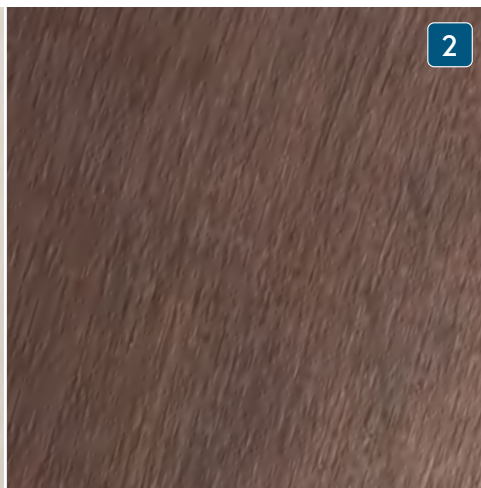
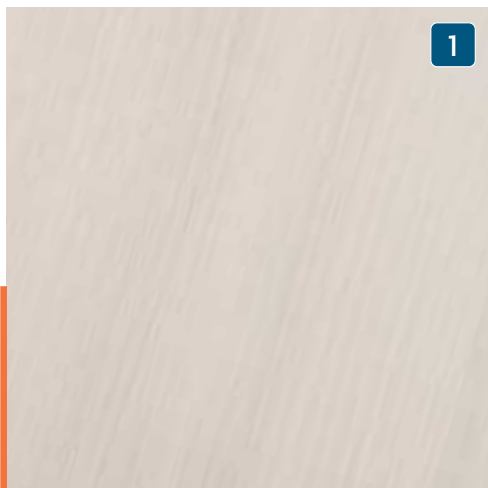
## 家具

ALPI 提供的海洋优化真木饰面。



标配: 1 红木清漆 · 选配: 2 加拿大栗木清漆 3 法国橡木 4 柚木

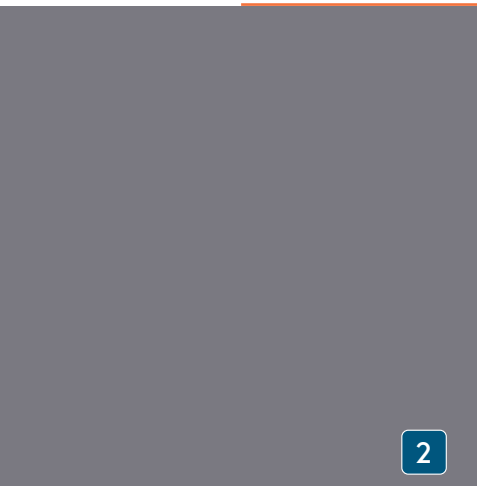
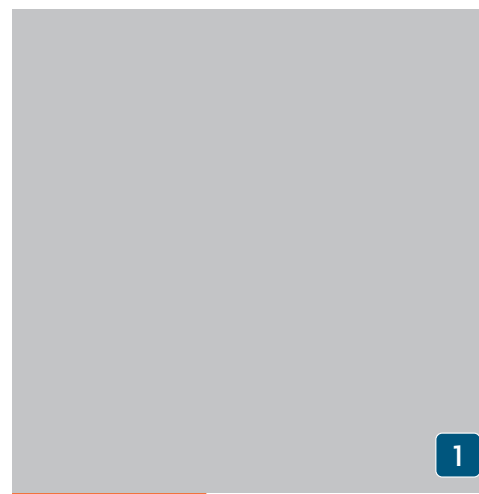
## 地板



标配: 1 合金欢 · 选配: 2 胡桃木 3 经典条纹 4 浅色橡木

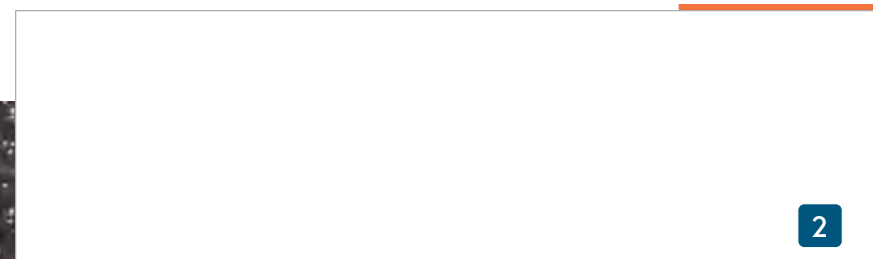
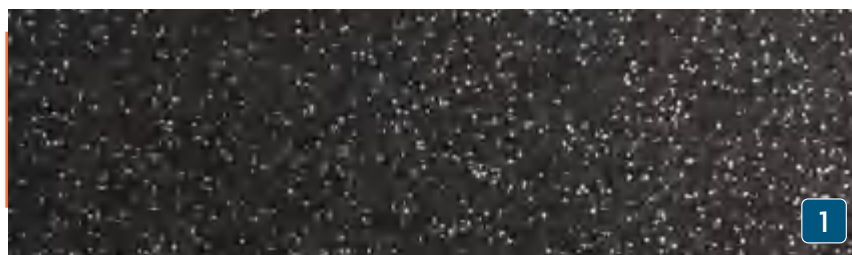


## 橱柜前板



选配：1 珍珠灰 2 海豚灰

## 厨房台面

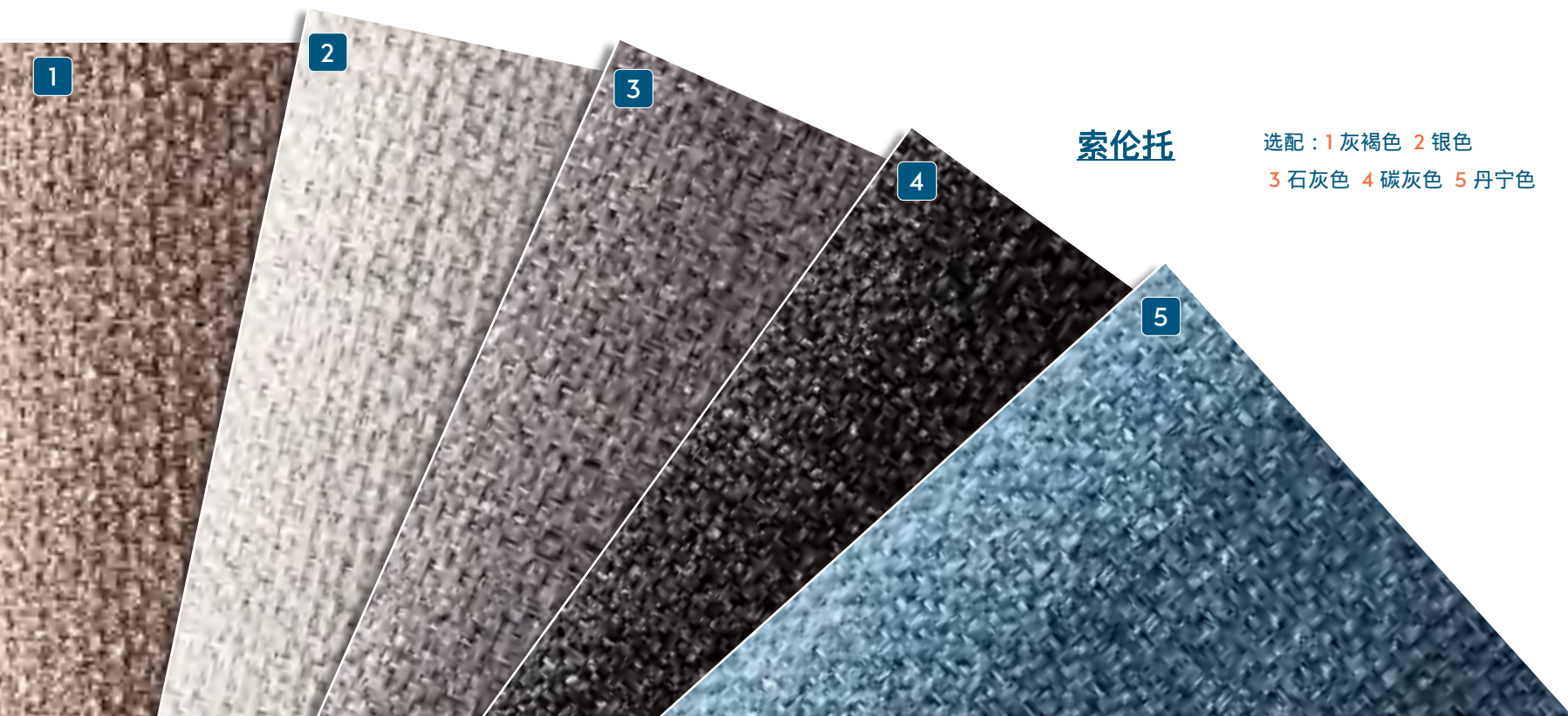


标配：1 黑色石英 · 选配：2 白色



**波托菲诺皮革**

选配：1 象牙色 2 石岩色 3 泥色 4 黏土色 5 巧克力色



**索伦托**

选配：1 灰褐色 2 银色  
3 石灰色 4 碳灰色 5 丹宁色

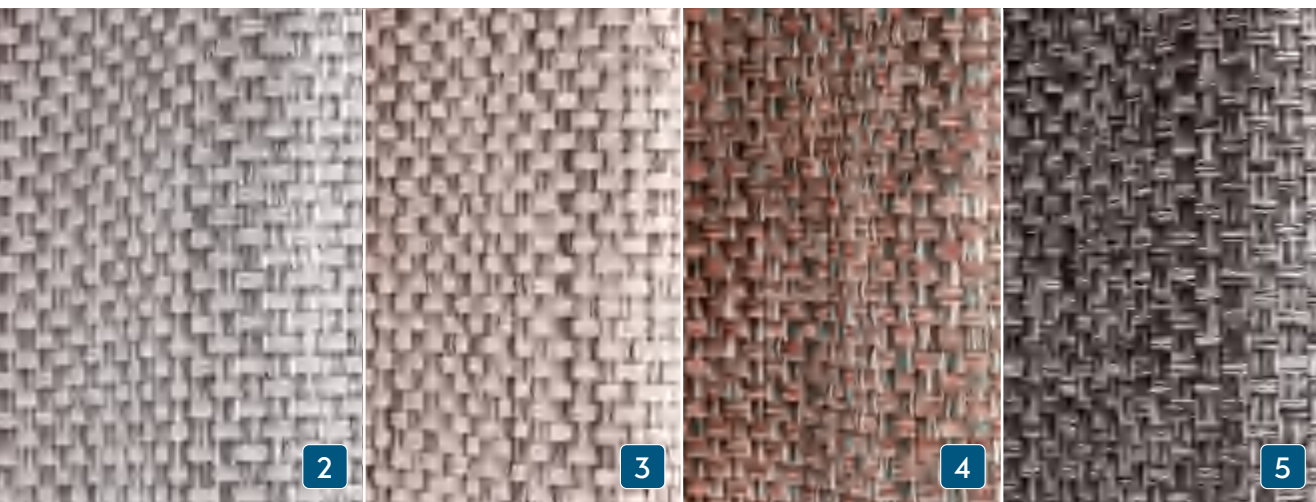






## 蒙地卡罗

标配：奶白色




## 摩纳哥

选配：1 杏仁色 2 青铜色 3 岩石色 4 黑松露 5 哈士奇

## 佛罗伦萨

选配：1 克里夫赛德 2 冰川色  
3 牡蛎色 4 麝香葡萄色  
5 石墨色



帆类型：**传统主帆**  
帆布材料：Elvstrøm SPS 可  
持续性能帆布  
布局：**三边形**  
特点：5个水平帆骨，2个  
缩帆  
点，修剪条纹

帆类型：**自动调整卷帆前帆**  
材料：Elvstrøm SPS 可持续性能帆布  
布局：**三角形**  
特点：4根短帆骨，修剪条纹，银色紫外线保护

SPS

TECHNOLOGY

可持续性能帆（SPS）：有了 Elvstrøm Sails，您可以选择使用主要由回收材料制成的帆布，从而发挥所选船帆布料的差异。这种高端层压帆布柔软且易于操作。

Sustainable Performance Sail (SPS): With Elvstrøm Sails, you have an option of making a difference by choosing a sail cloth made from mainly recycled materials. The high-end laminate sail is soft and easy to handle.

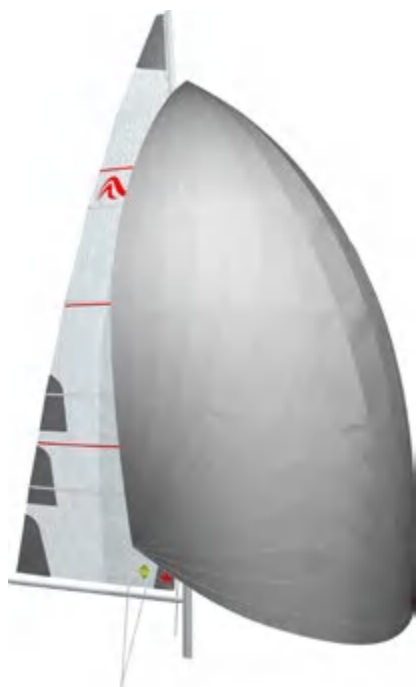


# SAILS

WIDE RANGE OF

所有帆系列都经过配置，为您提供安心。无论您是准备进行大型航行还是更倾向于熟悉的水域，您都将获得可靠耐用的帆配置。

The range of sails are all configured to give you peace of mind. Whether you are off for the big journey or prefer known waters, you will get a reliable and durable sail set-up.



帆类型：传统主帆  
帆布材料：Elvstrøm SPS 可  
持续  
性能帆布  
布局：三角形  
帆类型：球帆  
帆布材料：尼龙  
布局：三角形



帆类型：卷帆主帆  
帆布材料：Elvstrøm SPS 可持  
续性能帆布  
布局：三角形  
帆类型：Reacher（航向扩大  
型前帆）  
帆布材料：Elvstrøm SPS 可持  
续性能帆布  
布局：三角形

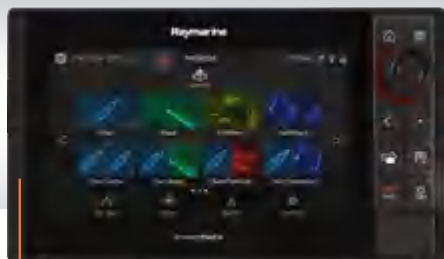


帆类型：传统主帆  
材料：Elvstrøm BlueWater Dacron 白  
色  
布局：交叉切割  
帆类型：Reacher（航向扩大型前  
帆）  
材料：Elvstrøm BlueWater Dacron 白  
色  
布局：交叉切割



帆类型：传统主帆  
材料：Elvstrøm Dacron 白色  
布局：交叉切割  
帆类型：自动调整卷帆前  
帆  
材料：Elvstrøm Dacron 白色  
布局：交叉切割

## RAYMARINE导航包



Raymarine AXIOM PRO 9 S 海图仪，触屏多功能显示屏，位于右舷驾驶台。



Raymarine VHF Ray63 位于海图桌，包含无线遥控手持机。



2 个 Raymarine i70s 多功能显示屏，驾驶台一边一个，包含传感器（风向、速度、深度、温度）



## 客厅电视包

客厅LED平板电视 | 客厅电视升降系统 | DVB-T2 电视天线



Raymarine Evolution 自动驾驶仪，带7英寸显示屏和无线遥控



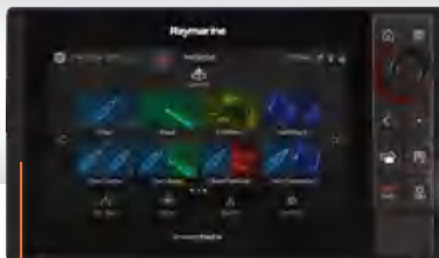
2个仪表架  
VHF 预留，包括天线和用于FM和AIS的分频器。

- 驾驶台无线充电
- 无电缆、防水的无线充电
  - 单手操作
  - 手机保持在附近，方便在航行过程中使用
  - 多功能，可用于媒体播放，作为导航辅助或遥测功能



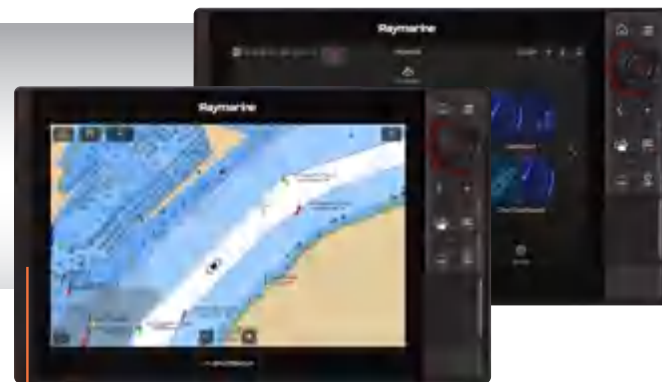
## 升级导航包

### 升级-第二海图仪



Raymarine AXIOM PRO 9 S 海图仪，触屏多功能显示屏，左舷驾驶台

### 升级-12寸海图仪



Raymarine AXIOM PRO 12 S 海图仪，触屏多功能显示屏，驾驶台一边一个

# XTRAS

MORE

460

Hanse的多样选择为您提供更多的自由 - 在空间和设计上。在这里，您会找到专为您的汉斯Hanse 460挑选的精选附加选项。

The variety of individual options at Hanse gives you more freedom – spatially and artistically.



1 两个舵手座椅，可折叠 2 不锈钢梯子用于出入口，可折叠 3 驾驶舱桌，不锈钢脚带柚木桌面，可电动降低为躺椅 4 仪表架上的油门控制 5 2个GRP舵轮，Y形辐条（黑色或白色） 6 带有第二卷帆器的第二前支索，包含滑轨 7 2个LEWMAR 50 EST EVO电动升降索绞盘 8 游泳平台，自动折叠，遥控和游泳梯 9 复合船首斜桅，带有集成的锚和前支索，带有双缆绳卷，包括第二前支索和球帆眼



2



3



4



8



9

1 Two helmsman seats, foldable 2 Stainless steel ladder for gateway exit, foldable 3 Cockpit table, stainless steel foot with teak top, electrically lowerable into sunbed 4 Throttle control on instrument pod 5 2 GRP steering wheels, Y-spoke (black or white) 6 Second forestay with second furler, electrical, incl. tracks 7 2 LEWMAR 50 EST EVO electrical halyard winches 8 Bathing platform, automatic fold-out, remote control and swimming ladder 9 Composite bowsprit with integrated anchor and forestay fitting with double mooring roll incl. 2nd forestay and gennaker eye



MADE IN  
**GERMANY**  
SINCE 1990





打破规则，引领潮流。对我们来说，这不仅仅是一个标语。这是我们对每艘成品游艇的承诺。您可以感受、体验和享受海里海里的承诺。

Breaking rules, setting trends. To us, this is more than just a catchphrase. It is a commitment we make a reality with each finished yacht. A commitment you can feel, experience and enjoy sea mile by sea mile. Discover more about this on the following pages.



BREAKING RULES

SETTING TRENDS

打破常规 引领潮流

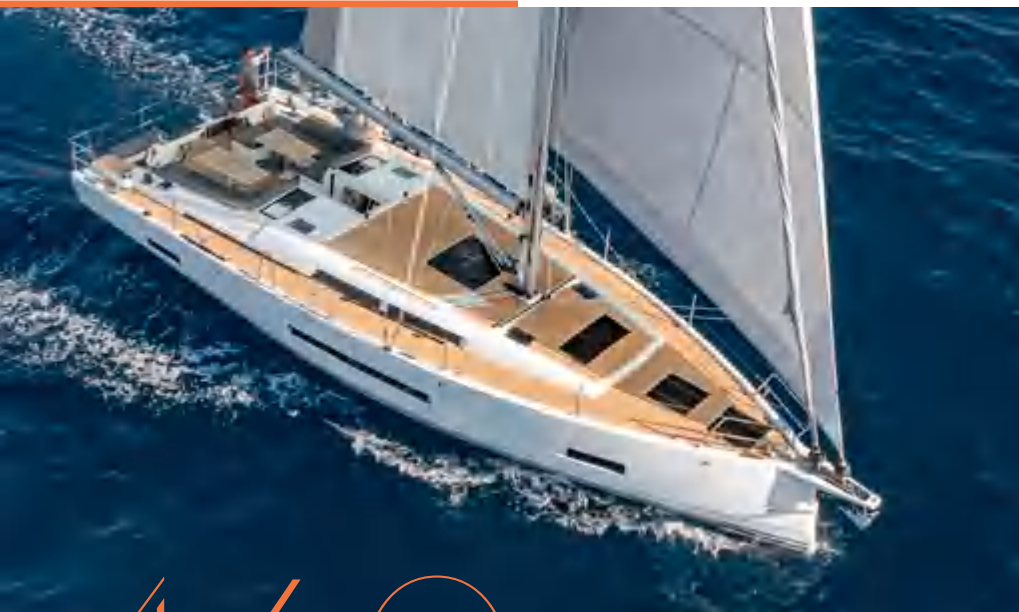
“引人注目的设计、创新功能和非常敏锐的定价相结合，使这个工厂成为一个真正的成功故事。”

Sailing Today Magazine

迄今为止，汉斯制造的游艇已获得超过 70 个国际奖项。

To date, yachts made by Hanse have won more than 70 international awards.

MORE  
THAN



460 MILESTONE

Hanse 460 的推出标志着与Berret Racoupeau合作开发的新设计型号系列的开端。

“这一目标是开发一种新的风格，使其能够在未来的产品线中保持一定的永恒性。任务是将这种



Bei berühmten Regatten feiern Hanse Yachten immer wieder große Erfolge, z.B. auf der Atlantic Rally for Cruisers, der Copa del Ray oder der Nordseewoche.

Time and time again, Hanse yachts achieve great successes in legendary regattas such as the Atlantic Rally for Cruisers, the Copa del Ray or the Nordseewoche.

汉斯与世界知名的游艇设计师合作打造他们的游艇。  
我们的第一个联合开发立即成为经典：  
HANSE 371。

Hanse create their yachts in cooperation with world-renowned boat designers. Our first joint development became an instant classic: the Hanse 371.



全世界的航海爱好者都青睐汉斯帆船。  
世界第二大帆船制造商的国际经销商网络向70个国家提供服务。

All over the world, sailing enthusiasts favour Hanse yachts. The international dealer network of the world's second-largest sailing yacht manufacturer delivers to 70 countries.

“在世界的尽头，汉斯游艇与德国一样令人垂涎。”

Anthony Bishop | 澳大利亚经销商

The introduction of the Hanse 460 marks the beginning of a redesigned model range developed in cooperation with Berret Racoupeau.

新灵感的识别特征与历史DNA相融合。 ” Olivier Racoupeau | 游艇设计师



360  
DEGREES

舒适地从家中开始您最喜爱的Hanse游艇的个人导览，使用我们的360度全景图。花费您所需的所有时间，以引人入胜的细节发现每一个细节。尽情享受船舱下的航行体验。

Start your personal tour around your favourite Hanse comfortably from home with our 360 degree panoramas. Take all the time you need and discover every detail in captivating detail. Enjoy navigating below deck.



1,500  
OPTIONS

“您不会找到比 HANSE 更可定制的生产型游艇。”

Maxim Neumann | Hanse销售主管

得益于种类繁多的室内装潢、家具木材和地毯，我们提供了数以千计的个性化家具布置。像这样的广泛选择在市场上是独一无二的。

Thanks to the wide range of upholstery, furniture wood and carpets, we offer thousands of individual furnishing arrangements. A wide choice like this is unique in the market.

89



在汉斯，890 名专业的帆船爱好者携手并进。由尖端的生产工艺提供支持。完全致力于他们的职业。

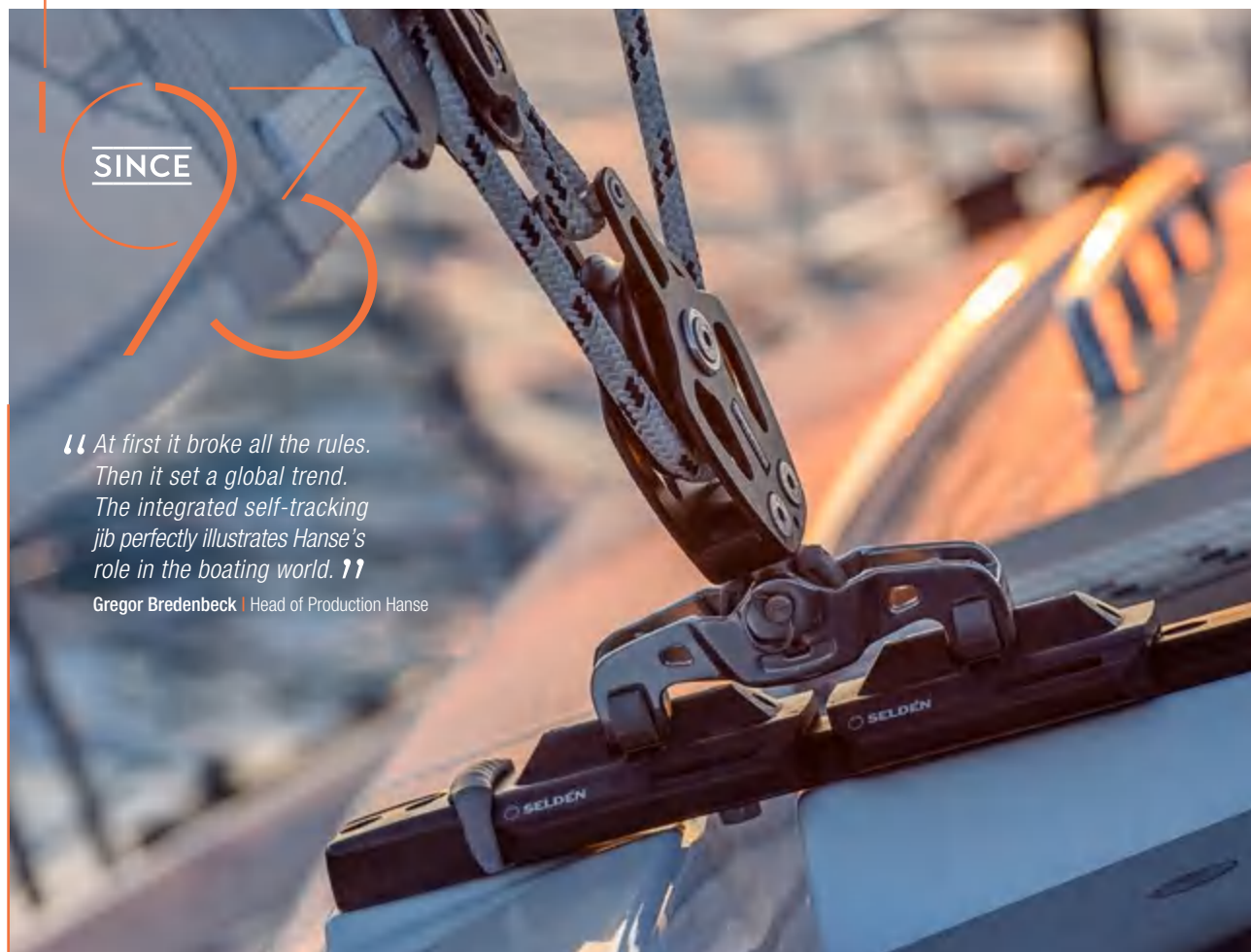
At Hanse, 890 dedicated sailing enthusiasts work together hand in hand. Supported by cutting-edge production processes. Driven by total commitment to their profession.

“我们和我们的客户是志同道合的灵魂：没有什么比设计完美的帆船更让我们享受的了。”

Andreas Unger | 产品经理

1990 年代初，第一艘汉斯开始了造船业的革命。它采用了有史以来第一个批量生产的集成自前帆自动换舷系统。

In the early 1990s, the very first Hanse started a revolution in boat building. It featured the first integrated self-tracking jib ever produced in series.



SINCE

“ At first it broke all the rules.  
Then it set a global trend.  
The integrated self-tracking  
jib perfectly illustrates Hanse's  
role in the boating world. ”

Gregor Bredenbeck | Head of Production Hanse

HANSE YACHTS



Hanse游艇的每一个细节都令人印象深刻，是让您叹为观止的杰作。它们不仅仅是一个完美协调的设计和现代技术的集合。它们反映了汉斯工程师的经验和专业知识。他们对游艇的热情可以从每艘汉斯的无可挑剔的精确度和一丝不苟的细节中体现出来。

Impressive in every detail, Hanse yachts are masterpieces made to take your breath away. They are far more than a perfectly harmonised ensemble of design and the most modern technologies. They reflect the experience and know-how of Hanse engineers. Their passion for yachting can be felt in the unmistakable precision and meticulous detailing found in every Hanse.

HANSE  
ENGINEERING





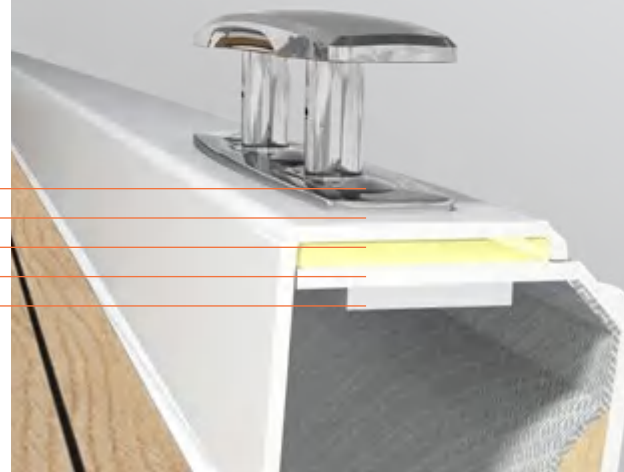


## 龙骨船体连接

安全第一。龙骨板牢固地放置在由环氧树脂制成的超强基床中。这意味着龙骨直接锚定在强大的地板结构中。龙骨螺栓，包括垫片和螺母，均由不锈钢制成。

Safety first. The keel plates lie securely in an ultra-strong bed made of epoxy resin. This means that the keel is directly anchored in the powerful floor structure. The keel bolts, including discs and nuts, are made of stainless steel.

不锈钢螺栓  
甲板  
最佳配方性能胶水  
船体  
螺纹铝板

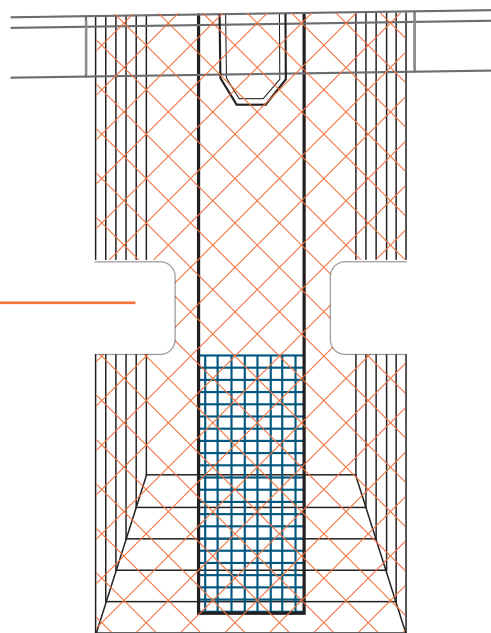
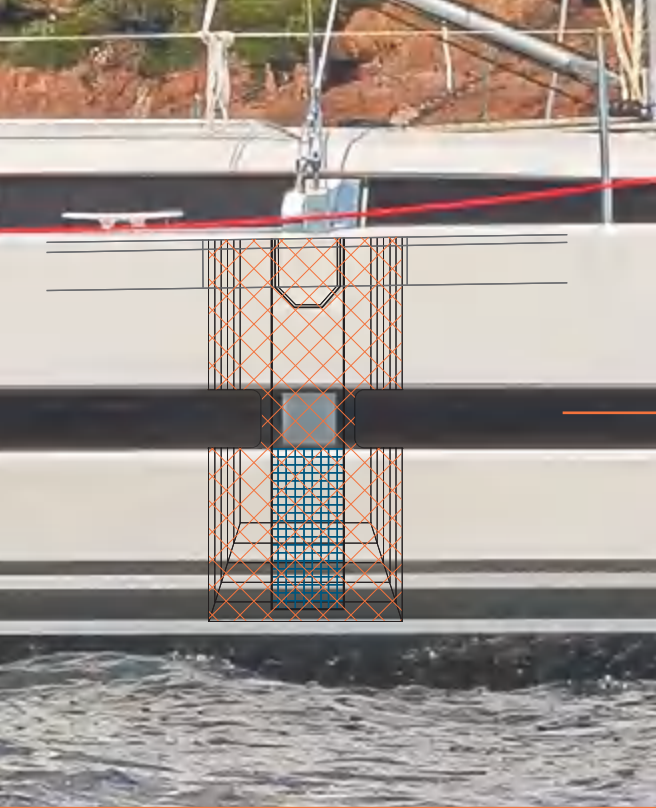


## 船体甲板连接

Hanse已经开发了一种特殊的船体-甲板连接，远远超出所有标准要求。除了使用高度耐用的聚酯粘合树脂外，甲板和船体还通过高强度的螺栓进行固定。这样做产生了一艘稳定、无扭曲、具有运动特性的帆船。

Hanse has developed a special hull-deck connection which goes well beyond all standard requirements. In addition to the use of highly robust polyester bonding resin, the deck and hull are anchored with the use of high-strength bolts in the cleats. This results in a stable, torsion-free yacht with a sporty character.





## 碳纤维加固链板

在您的汉斯游艇上，每一克都至关重要。这同样适用于超强的链板，其在需要强度的地方专门使用碳纤维进行加固。所有载荷都优雅地传递到船体中。这样，您在甲板下的休息区保持空旷，可以尽情享受海上生活。

No gram is too much in your Hanse. This also applies to the ultra-strong chain-plates, which are specifically reinforced with carbon where the strength is needed. All loads are transferred elegantly into the hull. Your lounge below deck remains free so you can enjoy life at sea.

## 三明治结构

Hanse 460采用高质量的三明治工艺进行构建。船体采用多层精选材料，每个细节都经过精确计算。它特别轻巧，并且由于外层使用了乙烯基酯材料，完全抵抗渗透现象。

The Hanse 510 is constructed using the high-quality, sandwich process. The hull features several layers of select materials and is precisely calculated in every detail. It is particularly lightweight and thanks to the exterior vinyl ester layer completely resistant to osmosis.

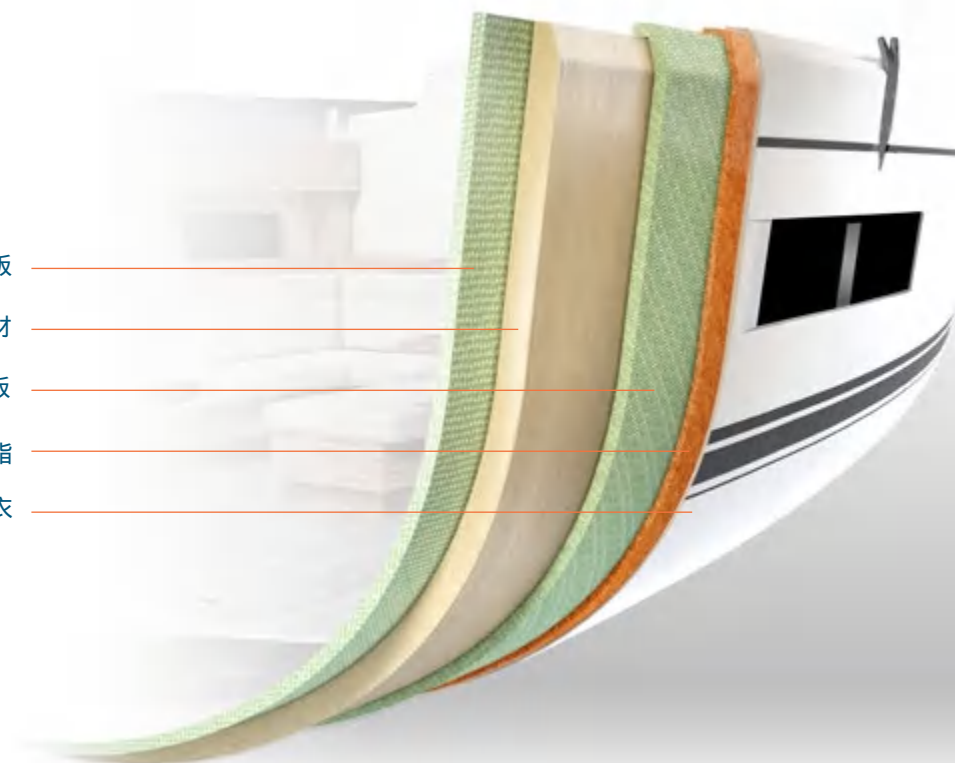
GRP层压板

芯材

GRP层压板

乙烯基酯树脂

胶衣





# 460 技术参数



船宽 4.79 m | 15'9"



总长 14.60 m | 47'11"

总长	14.60 m	47'11"
船体长	13.87 m	45'6"
水线长	13.05 m	42'10"
船宽	4.79 m	15'9"
吃水		
L型龙骨, 中等	2.25 m	7'5"
L型浅龙骨	1.75 m	5'9"
排水量		
L型龙骨, 中等	approx. 12.60 t	27,778 lb
L型浅龙骨	approx. 13.00 t	28,660 lb
发动机 (柴油)		
标配	approx. 57 PS	57 HP
选配	approx. 80 PS	80 HP
油箱	approx. 200 l	53 gal
淡水箱	approx. 450 l	119 gal
CE证书	A -12 ocean	
设计	Berret - Racoupeau	
内饰	Berret - Racoupeau	

水线以上桅杆高度	approx. 21.90 m	71'10"
上风帆面积	approx. 113.00 m <sup>2</sup>	1,216 sq ft
下风帆面积	approx. 234.00 m <sup>2</sup>	2,519 sq ft
主帆	approx. 64.00 m <sup>2</sup>	689 sq ft
自动调整前帆	approx. 42.00 m <sup>2</sup>	452 sq ft
大前帆	approx. 49.00 m <sup>2</sup>	527 sq ft
Reacher	approx. 78.00 m <sup>2</sup>	840 sq ft
球帆	approx. 170.00 m <sup>2</sup>	1,830 sq ft

以上尺寸仅供参考。参数和材质如有更改, 恕不另行通知。



## 传感器

监控您的充电水平和设备



## 开关控制

通过遥控器操作您的电子设备



## 报告问题

直接联系您的经销商以获得快速帮助



## 商店&配件

用于订购设备、用品和备件的功能



## 保险

Pantaenius 提供的独家应用内的所有船舶保险的报价



## 手册

一个应用程序中的所有手册和说明



## 警报

推送当前事件的通知



## 维护

在到期日之前推送通知以维护所有组件

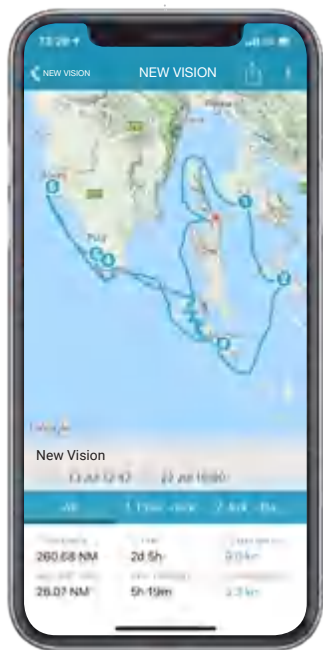


## 航程

与朋友分享您的航行和航程数据



WIRELESS MANAGEMENT



# MY HANSE SAFETY CLOUD

## 我的汉斯安全云智能系统

一切尽在掌握。使用我的汉斯安全云智能系统，您可以完全访问汉斯的所有重要数据。随时随地。BoatMonitoring、eLogBook 和 eServiceBook 等智能应用程序可让您轻松舒适地监督您的游艇，自动更新日志并密切关注所有维护日期。

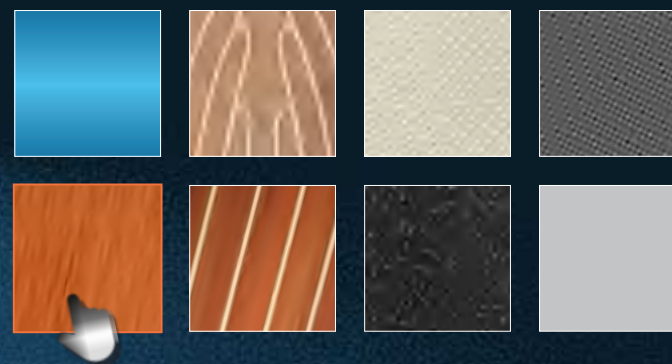
Everything under control. With the MyHanse Safety Cloud you gain full access to all important data of your Hanse. At any time and any place. Intelligent applications as BoatMonitoring, eLogBook and eServiceBook allow you to supervise your yacht easily and comfortably, to keep the logbook automatically up to date and to keep an eye on all maintenance dates.



## 设计奖获得者

何不尽情放飞想象？我们全新的配置器以三维方式呈现您梦寐以求的Hanse，从各个角度都可一览无余。颜色、表面、龙骨变种 - 您可以通过点击更改它们，将船体旋转到您喜欢的任何方向，并从任何角度检查。一旦您满意结果，只需再点击一次，就可以订购您的全新梦幻Hanse。打开暗模式，它实际上看起来就像您个性化的Hanse 460已经在码头等候您了。

How about indulging your fantasies? Our brand-new configurator presents your dream Hanse in three dimensions and from all perspectives. Colour, surfaces, keel variants - you can change them all with a click, turn the boat in whatever direction you fancy and inspect it from any angle. And once you're happy with the result, you can order your new dream Hanse with just one more click. Switch on dark mode and it actually looks like your personalised Hanse 460 is waiting for you in the marina already.



# YOUR HANSE

3D配置器



试一试吧。通过配置器，您可以随时随地轻松探索所有选项。界面直观且获奖无数 - 在德国Stevie奖项中获得2次金奖和1次德国数字奖的铜奖。Hanse配置器和Hanse 460 - 两个真正的赢家。

Give it a try. With the configurator, you can explore all the options again and again at your leisure. The interface is intuitive and award-winning - with 2 x Gold at the German Stevie Award and 1 x Bronze at the German Digital Award. The Hanse configurator and the Hanse 460 - two real winners.







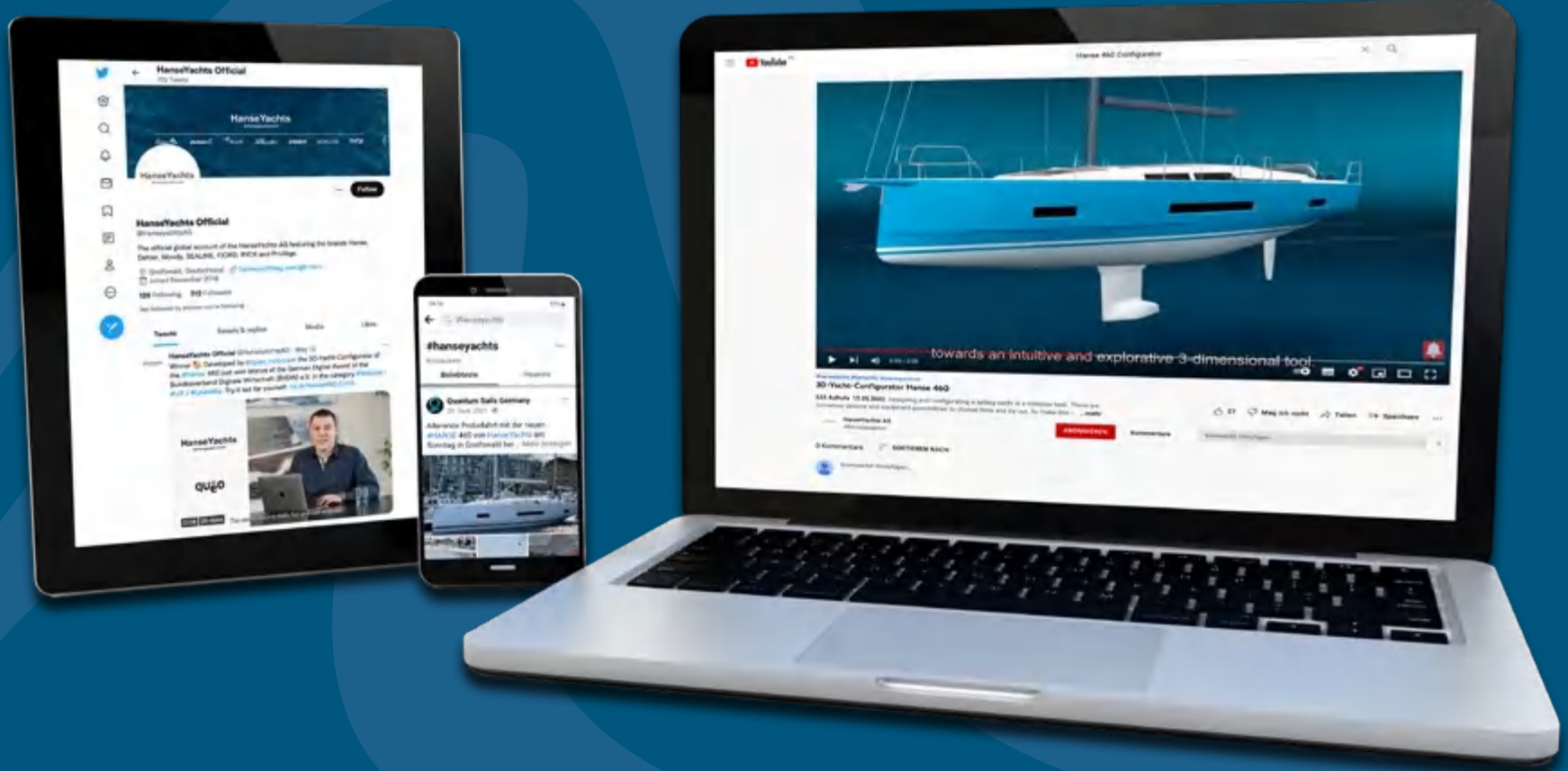


# VISION

Redefined

# SOCIAL MEDIA

FOLLOW US



This brochure is not contractual. The yachts depicted partly comprise special equipment not included in the standard scope of supply. Illustrations may not correspond with current versions. Subject to alterations in design and equipment without notice and errors excepted. Photos/Illustrations: HanseYachts AG, Nico Krauss, Peter-Paul Reinmuth, Björn Willer, Berret-Racoupeau, Malwin Faber, Navico, B&G, Fusion, Quantum, Nico Martínez  
 Design: design-harksen.de & ulfson.de | Print: Druckhaus Panzig GmbH