



470

DESIGN FOR FUTURE

*Hanse*   
BREAKING RULES . SETTING TRENDS









# Design for FUTURE

新的绚丽外观，轻松畅快的航行与迅猛巡航——备受推崇的Berret-Racoupeau设计工作室在这艘12米的豪华游艇上不遗余力：甲板上与船舱下拥有宽敞慷慨的空间，呈现出无与伦比的运动风采与动感性能，更附带无可匹敌的功能，可选装太阳能电池以及宽大的小艇库。汉斯独有的多种配置选项，让您将Hanse 410打造成独一无二的个人度假胜地。

---

Easy Sailing and Fast Cruising in a new spectacular look - the renowned design studio Berret-Racoupeau has gone above and beyond with this 12-metre yacht: generous space on and below deck, an incomparably sporty and dynamic performance as well as unbeatable functionality complete with optional solar cells and a generously sized tender garage. With the many configuration options typical for Hanse, you can turn your Hanse 410 into your very own personal holiday paradise.

# INNOVATION

## 卓越创新

### 引领新潮：全新定义的Hanse 410

- ⌚ 水动力学优化的船体设计
- ⌚ 专为卓越性能而设计的水线
- ⌚ 高大而运动感十足的桅杆，实现帆平面的最大化
- ⌚ 宽敞的座舱，配备双桌
- ⌚ 多样选择的高质量可持续帆布
- ⌚ 可选的全电动推进系统，最大航程达55海里

- 
- ⌚ hydrodynamically optimised hull design
  - ⌚ waterline designed for performance
  - ⌚ tall and sporty rig for a maximised sail plan
  - ⌚ large cockpit with double cockpit tables
  - ⌚ wide choice of high-quality and sustainable sails
  - ⌚ optional fully electric propulsion with up to 55 NM reach















在大海中感到宾至如归。法国世界级设计师 Berret-Racoupeau 独创的先进水动力学船体设计确保了卓越的平衡和稳定性。性能优化的水线与汉斯典型的运动感十足、高大的桅杆的完美结合，为航行提供了难忘的体验。

At home on the ocean. The progressive, hydrodynamic hull design from the pen of French world-class designer Berret-Racoupeau makes for extraordinary balance and stability. The combination of a performance-optimised waterline and Hanse's typically sporty and tall rig guarantees an unforgettable sailing experience.

# FAST

# 高速巡航





Feel the pleasure of

COMFORT & SPEED









84<sup>m<sup>2</sup></sup> TOTAL SAIL AREA  
+ 74 m<sup>2</sup> CROSSOVER

## 索具和风帆优化

高大的桅杆是每一艘Hanse的特点。Berret-Racoupeau的游艇设计师通过使用高度复杂的计算模型，完美地为每艘Hanse设计帆布布局。这确保您在各种条件下都拥有最佳的航行特性，并确保您的Hanse是其类别中最快的游艇之一。

A high rig is the trademark of every Hanse. The yacht designers from Berret-Racoupeau perfectly form the sail plan for each Hanse with the use of highly sophisticated calculation models. This guarantees that you have the best sailing characteristics under all conditions, and it ensures your Hanse is one of the fastest yachts in its class.





## 高速巡航与轻松驾驶完美结合

无限航行体验：亲身感受Hanse 410的魅力，这是一艘以创新、现代和运动感的船体设计为特色，在每个港口都引人注目。然而，Hanse 410不仅仅是迷人的外观。独特的刺浪船艏、流线型水线和精心设计的船脊位置确保了最佳的水排放和无与伦比的浮力。借助其流线型优化设计，轻松滑过水面，将水阻降至最低，让您的航海冒险达到新的高度。

Unlimited Sailing: Experience the Hanse 410, a yacht that captivates with its innovative, modern, and sporty hull design, turning heads at every port. However, the Hanse 410 offers more than just striking aesthetics. The unique wave-piercer bow, streamlined waterline, and expertly positioned chines ensure optimal water drainage and unparalleled buoyancy. Glide effortlessly through the water with its flow-optimised design, reducing water resistance to a minimum and taking your sailing adventures to new heights.





12<sup>LOA</sup>.55 m 4<sup>BEAM</sup>.29 m 2<sup>DRAFT</sup>.10 m 9<sup>DISPLACEMENT</sup>.68 t





## 汉斯智能调整系统

我们精心调整了帆布，使您能够像专业人士一样航行，并配置了可无缝调整的后支索，这使得桅杆和帆的轮廓能够始终完美地适应风力。

We have trimmed the sails so you can sail like a pro and included a backstay, which can be adjusted seamlessly. This enables the mast and the profile of the sail to perfectly adapt to the wind at all times.





Hanse轻松驾驶概念具有传奇色彩。我们发明了集成式自动调整前帆系统，并将所有索绳引导至驾驶位置。这意味着您可以独自航行您的船，或者在与客人共度时光的同时无忧无虑地航行。可以在掌舵上轻松完成收帆、升帆和起航。甲板没有绳索和配件，让您在海上或在港口放松时，提供无与伦比的舒适和空间。

The Hanse Easy Sailing Concept is legendary. We invented the integrated self-tacking jib and brought all the lines to the helm. This means you can sail your yacht on your own. Reefing, tacking and setting sail can all be performed from the helm without any effort. The deck is free of lines and fittings, giving you uncompromising comfort and space while you are at sea or relaxing in the harbour.

# EASY SAILING

轻松驾驶









# 180° CONTROL

## 汉斯驾驶控制系统

按下按钮即可进行航行？在汉斯，您的梦想现在成为现实！从驾驶舱控制整个系统。所有绳索都引导至舵手位置。这为您在所有航行操纵中提供了绝对的掌控。

Sailing at the touch of a button? With Hanse, your dream is now reality! Control the entire system from the cockpit. All the halyards and sheets are led to the helm position. This gives you absolute control in all sailing manoeuvres.







## 船首斜撑和主寮的智能解决方案

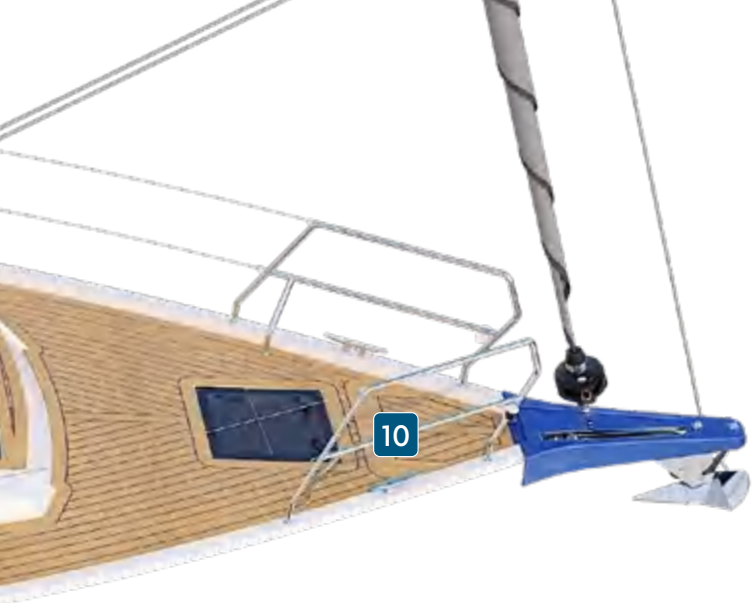
始终追求最佳性能：船首桅杆是提高游艇航行性能和多功能性的关键元素。它使得球帆和零号帆能够得以有效利用，从而扩展了对于复杂航行操纵的可能性。

Always getting the best performance: The bowsprit is a key element in improving the yacht's sailing performance and versatility. It enables the effective use of gennakers and code zeros, which expands the possibilities for demanding sailing manoeuvres.









# DESIGN

## 创新设计

### 外观&内饰设计亮点

1 带柚木折叠式游泳平台 2 配备可选烧烤和洗手池的驾驶座椅 3 运动型双操舵系统 4 人体工学设计的导航终端支架 5 舷梯旁的实用储物空间 6 七个甲板上的超结构窗户 7 十个可开启的甲板舱口 8 Hanse前帆自动换舵系统 9 前甲板上的天窗 10 锚具储物柜 11 明亮宽敞的艙舱 12 宽敞且设备齐全的厨房 13 舒适的导航角作为控制中心 14 时尚的客厅，配有休息沙发和优雅可降低的客厅桌 15 豪华的船东舱，带有特大岛型床、大面积天窗和充足的存储空间



1 Folding bathing platform with teak 2 Helm seats with optional BBQ and washbasin 3 Sporty twin steering system 4 Ergonomic plotter pods 5 Practical storage space next to the companionway 6 Seven deck super-structure windows 7 Ten opening deck hatches 8 Hanse self-tacking jib 9 Skylights in the foredeck 10 Anchor locker 11 Bright, spacious aft cabin 12 Generous, fully equipped galley 13 Comfortable navigation corner as control centre 14 Stylish saloon with lounge sofas and elegant, lowerable saloon table 15 Luxurious owner's cabin with king-size island bed, wonderfully large skylights and plenty of storage space









## 创新的外观设计

拥有Hanse，您拥有一艘引人注目的先进游艇。技术创新和每一个细节的高质量，与Hanse 410的情感设计和舒适的室内氛围一样重要。每一个细节都是卓越设计的微妙表达。先进技术及其整合的协调合奏是Hanse游艇设计的最高艺术，也是我们努力创造完美游艇的动力所在。

---

With Hanse, you have a progressive yacht that makes a statement. Technical innovations and quality in every detail are just as much part of the Hanse 410 as are an emotional design and comfortable atmosphere of well-being. Each detail is a subtle expression of superior design. The well-orchestrated ensemble of advanced technology and its integration is the highest art of yacht design at Hanse – and what drives us to create the perfect yacht.





## 绿色太阳能

Hanse 410上的太阳能电池板作为一种替代能源，降低对传统能源的依赖。这些电池板被战略性地安装在甲板上，以最大程度地暴露在阳光下。这使得太阳光能高效转换为电能，进而用于为船上的电子设备、照明和其他电器设备供电。

---

The solar panels on the Hanse 410 serve as an alternative energy source that reduces dependence on conventional power sources. The panels are strategically positioned on deck to maximise sunlight exposure. This enables efficient conversion of sunlight into electrical energy, which in turn is used to power the on-board electronics, lighting and other electrical equipment.



## 气候中性航行

Hanse 410通过首次提供可选的电动驱动，为水上可持续交通设定了新的标准，可实现令人印象深刻的长达55海里的航程。这一开创性技术使得即使在没有足够风力的情况下，也能以极具环保的方式到达目的地。

通过整合燃料电池，该游艇配备了可靠且高效的能源。EFOY燃料电池的决定性优势在于其能够持续、静音地生成电能，无需依赖风力或阳光。这确保了游艇在恶劣条件下也始终拥有足够的能源。

The Hanse 410 sets new standards in terms of sustainable transport on the water by offering an optional electric drive for the first time, which enables an impressive range of up to 55 nautical miles. This pioneering technology makes it possible to reach your destinations in an extremely climate-friendly way, even without sufficient wind.

By integrating this fuel cell, the yacht is equipped with a reliable and efficient energy source. The decisive advantage of the EFOY fuel cell is its ability to generate electrical energy continuously and quietly without having to rely on wind or sun. This ensures that the yacht always has sufficient energy, even in adverse conditions.





全新维度：1 配有两张操舵桌的驾驶座舱是该级别中最大的。

2 驾驶舱桌可以轻触按钮降低，并转变为带有额外坐垫的舒适日光浴躺椅。

A whole new dimension: 1 The cockpit with its two cockpit tables is the largest in this class.

2 The cockpit tables can be lowered at the touch of a button and transformed into comfortable sun loungers with additional cushions.













时尚的体验：1 在你脚下是柚木，手中是一杯葡萄酒，而太阳以温暖的色彩亲吻着地平线。这是在船上度过难忘夜晚的完美背景。柚木不仅赋予豪华外观，还提供了一个防滑表面，确保安全行走。 2 智能设计，如集成的游泳梯，使接触水域变得更加方便。

Stylish flair: 1 The teak under your feet, a glass of wine in your hand, while the sun kisses the horizon in warm colours. The perfect backdrop for unforgettable evenings on board. The teak not only provides a luxurious look, but also a non-slip surface for a safe step. 2 Intelligent details such as an integrated bathing ladder make access to the water even more convenient.











## 创新的内饰设计

便利与风格：散发着明亮、现代和阁楼般的氛围，Hanse 410 将您包裹在精致、宜人的氛围中。游艇异常通风的感觉是由其宽大的窗户和舷窗加强的，所有这些都可以打开，引进大量的新鲜空气和光线。丰富的室内设计选择，搭配当代的材料和颜色，使您能够打造一个真正独特的风格，体现您个人的品味。

Convenience and style: Radiating a bright, modern, and loft-like ambience, the Hanse 410 envelops you in a sophisticated, feel-good atmosphere. The yacht's exceptionally airy feel is heightened by its expansive windows and hatches, which can all be opened to invite a generous flow of fresh air and light into the interior. A wealth of interior design options, coupled with contemporary materials and colours, allows you to craft a truly bespoke style that embodies your individual taste.





照您的喜好：1 现代、宽敞设计的厨房设备齐全且易于通风。通过在Hanse 410上配备一个两层抽屉冷藏箱，您可以在船上享受更多舒适。异常宽大的客厅桌提供了充足的空间，适合与家人和朋友欢聚或共进温馨的晚餐。2 L形台面为准备和烹饪食物提供了便利的空间。几乎隐形于优雅内饰中的壁橱单元，装有所有必要的器具。

Just as you like it: 1 The modern, generously designed galley is fully equipped and easy to ventilate. Enjoy even more comfort on board the Hanse 410 by equipping the galley with an 2-drawer cooler. The exceptionally large saloon table offers plenty of space for sociable evenings and cosy meals with family and friends. 2 The L-shaped worktop provides convenient space for preparing and cooking food. And the wall units, which blend almost invisibly into the elegant interior, hold all the necessary utensils.







在标配版本中，客厅桌采用坚固的固定桌面设计，并配备宽敞的存储空间。对于对多功能性和舒适性有最高要求的人，升级版本提供了两块可折叠的桌面和一个带有巧妙瓶架的可折叠吧台。

In der Standardausführung präsentiert sich der Salontisch mit einer stabilen, festen Tischplatte und großzügigem Stauraum. Für höchste Ansprüche an Vielseitigkeit und Komfort bietet die Upgrade-Version zwei klappbare Tischplatten und eine aufklappbare Bar mit einer cleveren Schublade für Flaschen.







更多设计选择：在右舷一侧，可以整合一个多功能家具。其主体可以灵活地作为导航桌、书桌和存储空间使用。它还提供了安装洗碗机或冰箱的空间。在标配版本中，右舷提供了一张长沙发。

Extended customisation: A multifunctional piece of furniture can be integrated on the starboard side. The body flexibly fulfils functions as a navigation table, desk and storage space. It offers space for a dishwasher or a refrigerator. In the standard version, a long sofa is available on the starboard side.





Hanse 410的卫生间间隔出一个独立的淋浴间，拥有自然光、充足的器具储物空间和现代纯粹的配件 - 在船上实现了奢华与功能的和谐融合。作为可选配置，船东还可以选择额外的卫生间。

The Hanse 410's head compartment impresses with a separate shower stall, daylight, plenty of storage space for utensils and modern, purist fittings - a harmonious mix of luxury and functionality on board. An additional head for the owner can be selected as an option.





一个隐秘的空间和放松之所：一个专属的避风港，承诺提供无与伦比的舒适和宁静。这宁静的氛围使您能够享受无被打扰的宁静时刻，成为放松和重新充电的理想场所。这个舱室设备齐全，提供带有连接浴室的设施，如优雅的岛型床、充裕的存储空间和架子，以及通过大型天窗和舷窗欣赏的壮丽景色。

A place to retreat and relax: A private sanctuary that promises unbeatable comfort and relaxation. The peaceful ambiance allows for undisturbed moments of tranquillity and rejuvenation, making it the ideal place to unwind and recharge. The cabin is fully equipped and offers an ensuite bathroom as well as a wealth of amenities, such as an elegant island bed, generous storage space and shelves as well as a breathtaking view through large skylights and hull windows.



宽敞的客厅构成了内部的中心，以其引人入胜的氛围而令人印象深刻。客厅中央的宽敞桌子创造了一个中心会议点，不仅适合用餐和社交聚会，还可作为一个多功能工作区或孩子们的游戏桌。高质量的木工和简洁的线条赋予室内永恒的优雅。

The spacious saloon constitutes the centerpiece of the interior, impressing with its inviting atmosphere. The roomy table in the middle of the saloon creates a central meeting point that not only invites for dining and social gatherings but also serves as a multifunctional workspace or gaming table for the kids. The high-quality woodworking and clean lines endow the interior with timeless elegance.





多样化的布局满足个性需求：

令人印象深刻的18种布局组合可让您根据个人需求定制您的Hanse 410。从其类别中最大的船主舱，配有独立的浴室或梳妆台，到舒适的艉舱和充裕的储物空间 - 您将找到满足您需求的完美配置。

---

Versatile layouts for individual style:

An impressive 18 layout combinations allow you to customise your Hanse 410 to suit your personal requirements. From the largest owner's cabin in its class with its own bathroom or dressing table to comfortable aft cabins and generous storage space - you'll find the perfect configuration for your needs.







无论您航行到哪里 - 您的Hanse都是独一无二的。您可以选择船体的颜色以及吸引您目光的座椅套色。在甲板上，决定在您的Hanse游艇上包括哪些技术设备完全取决于您。内部也承载着您的个性。在现代的阁楼氛围中或被海洋的优雅环绕中享受在海上的自由。高质量的材料和独家的配件等待着您。

Wherever you sail – your Hanse is one of a kind. You choose the colour of the hull and which upholstery you would like to catch your eye. On deck, the decision of which technical equipment to include on your Hanse yacht is all yours. The interior also carries your signature. Enjoy the freedom at sea in a modern loft atmosphere or surrounded by maritime elegance. High-quality materials and exclusive fittings await you.



# INDIVIDUAL

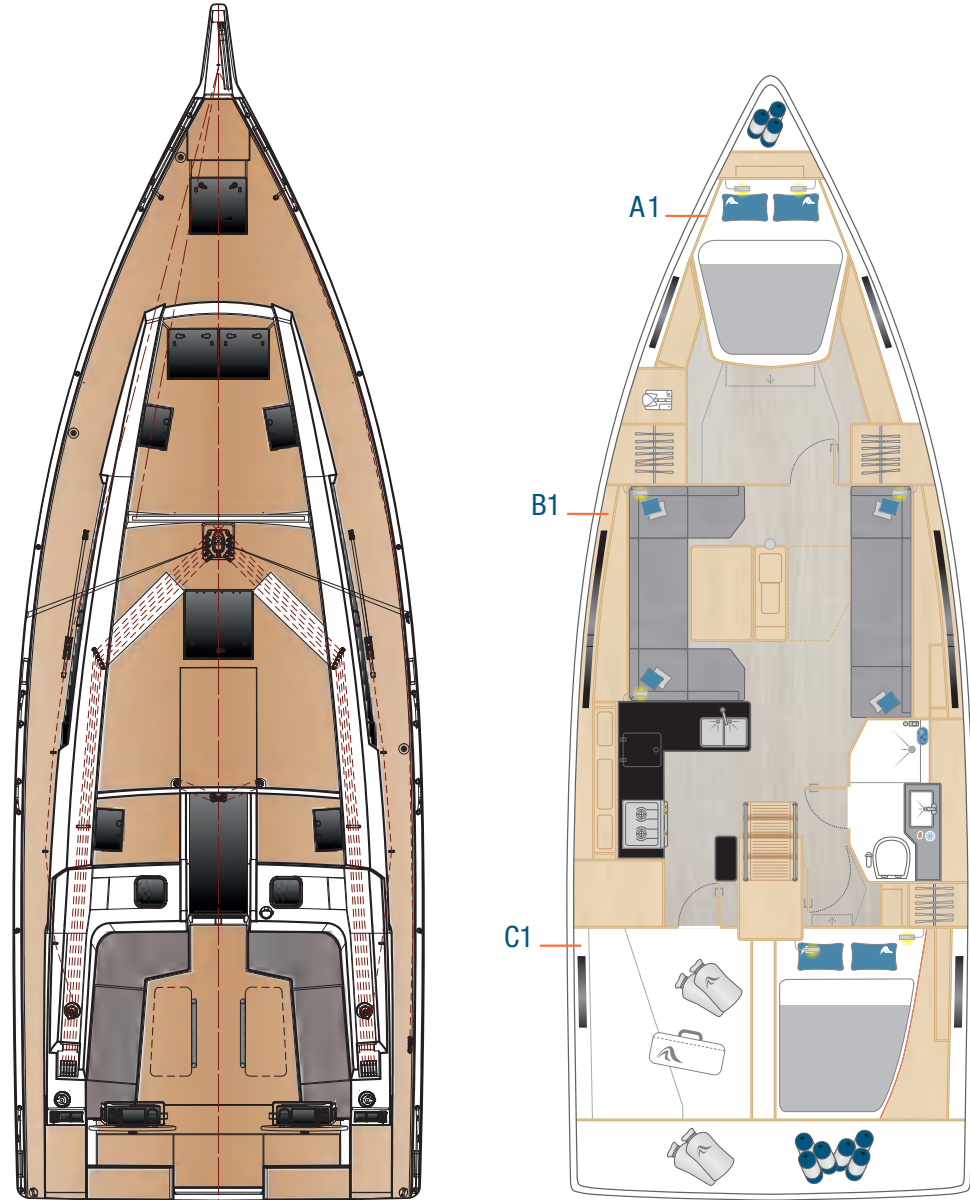
CUSTOMISATION 个性定制



## 个性化舱室概念

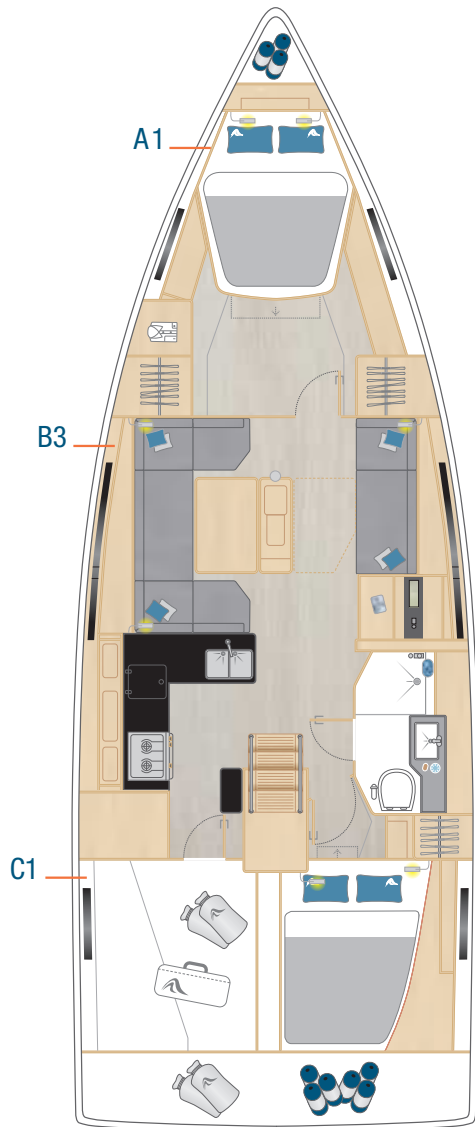
您是喜欢与伴侣一同航行，还是更愿意和家人或朋友一起？我们可以根据您的需求个性化定制您的Hanse 410的布局。选择适合您的定制和布局选项，无论是额外的浴室、两个舒适的艙舱，还是船东舱内的第二个大型衣柜。

Do you prefer to sail as a couple, with your family or with friends? We can individually tailor the layout of your Hanse 410 to your needs. Choose the customisation and layout options that are right for you, be it an additional bathroom, two comfortable aft cabins or a second large wardrobe in the owner's cabin.

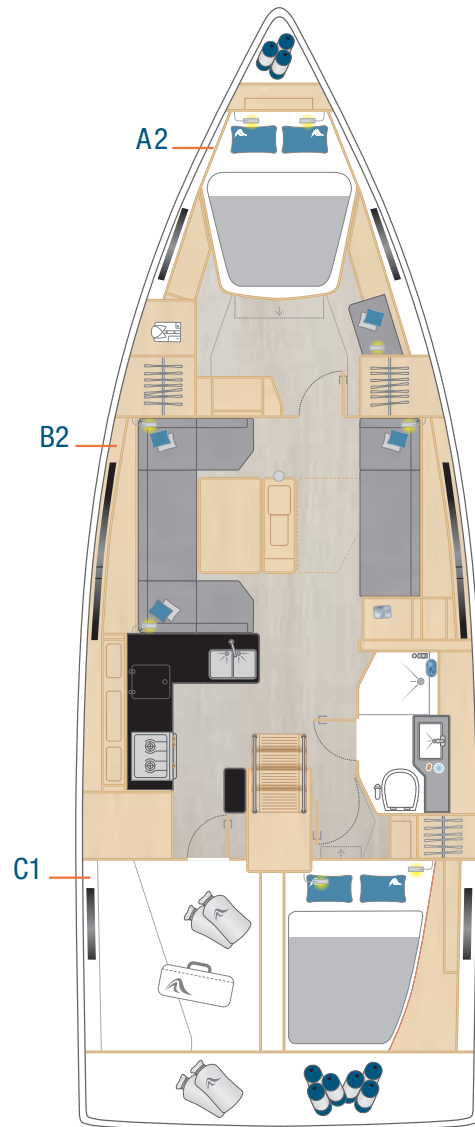


标配

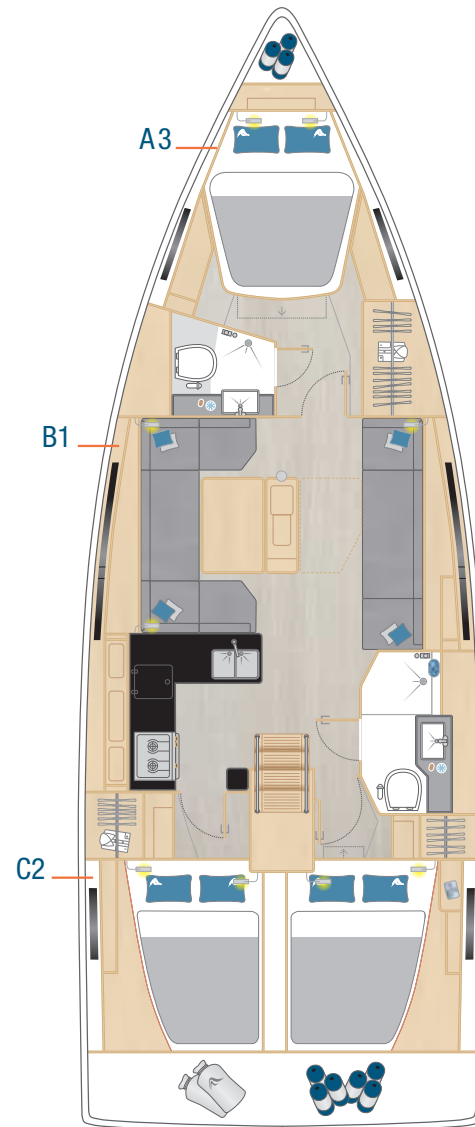




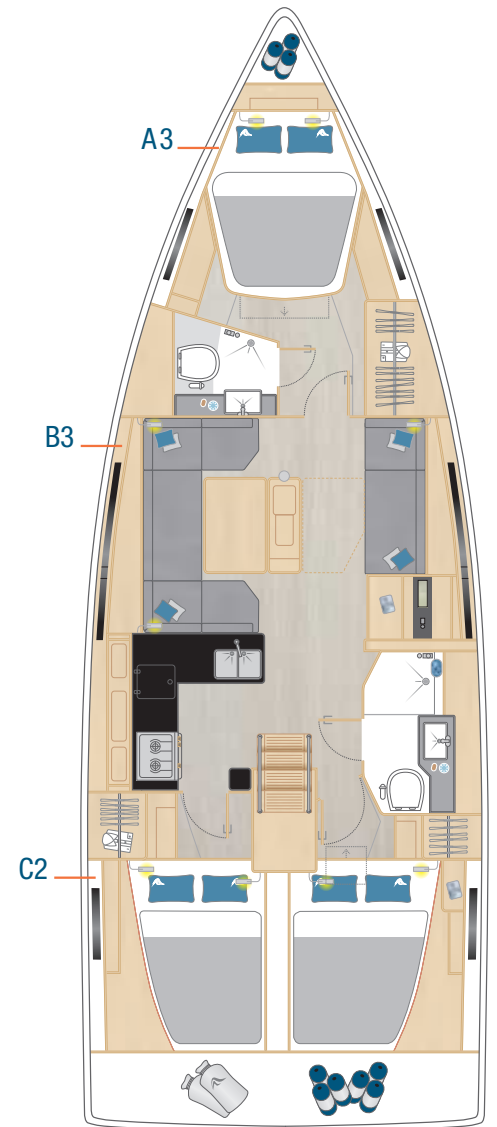
选配



选配



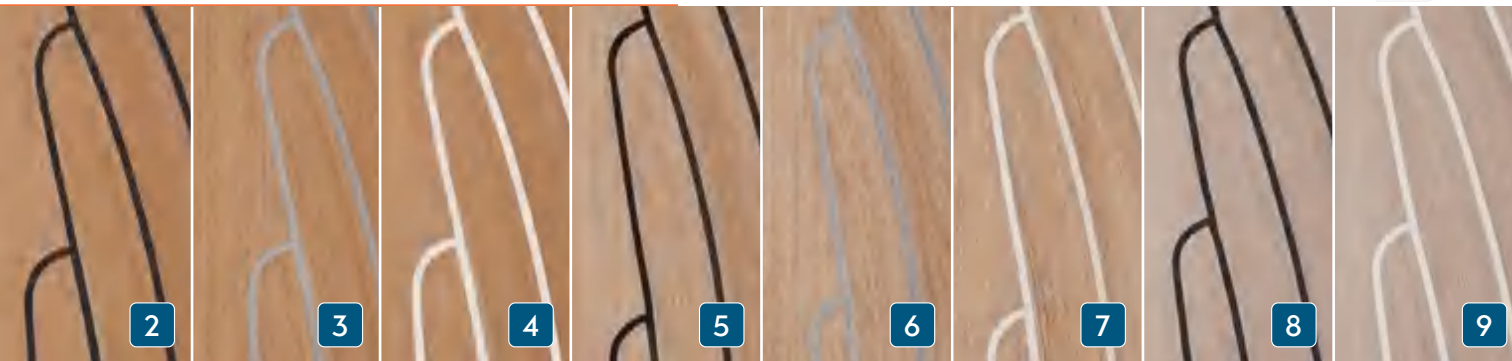
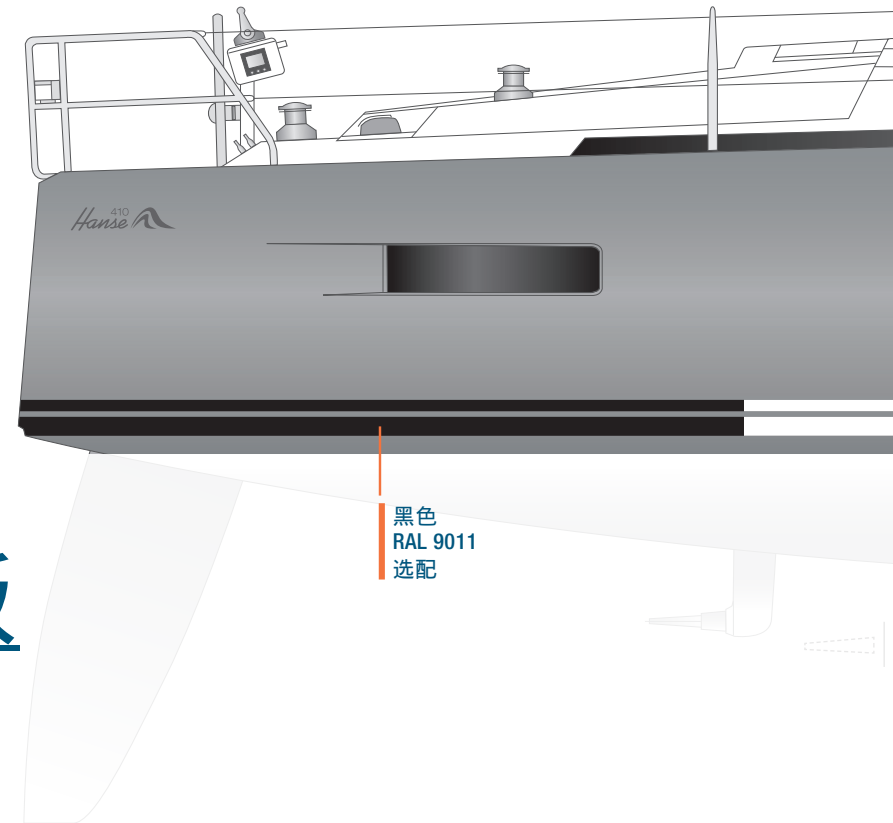
选配



选配



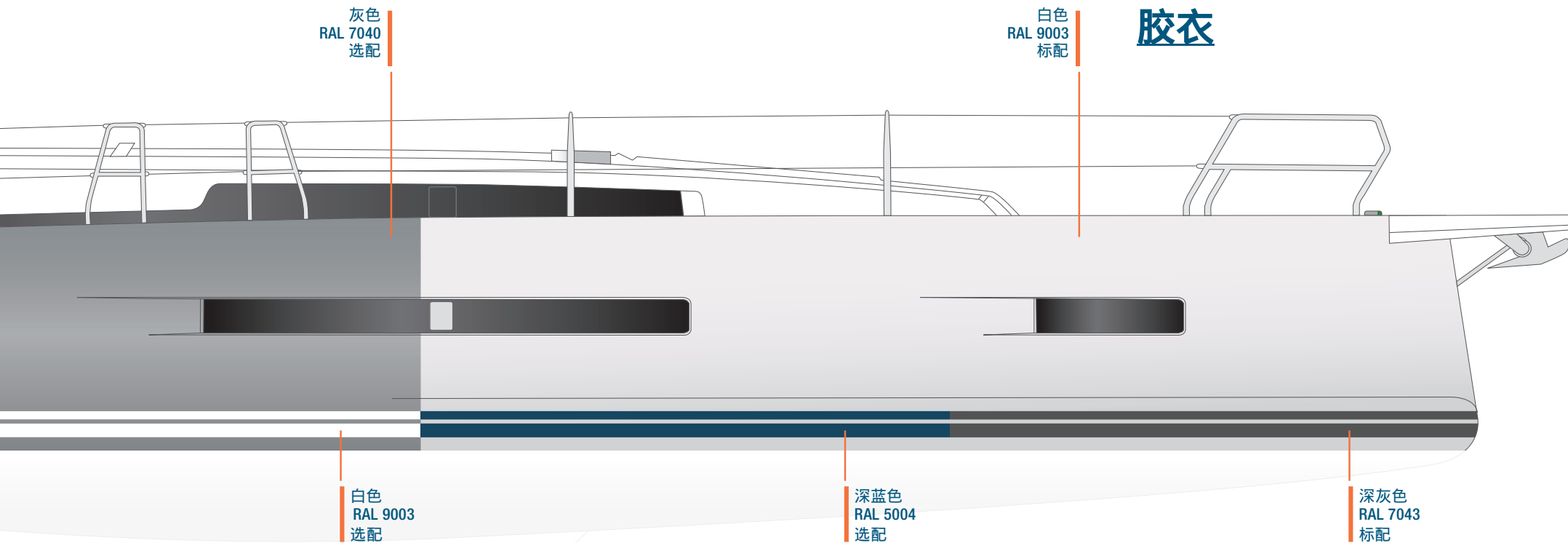
# TEAK 柚木甲板



## 柚木&复合柚木

- 选配: 1 柚木·复合柚木: 2 经典柚木黑 3 经典柚木灰 4 经典柚木白  
 5 磨砂柚木黑 6 磨砂柚木灰  
 7 磨砂柚木白 8 蓝水柚木黑  
 9 蓝水柚木白





胶衣

灰色  
RAL 7040  
选配

白色  
RAL 9003  
标配

白色  
RAL 9003  
选配

深蓝色  
RAL 5004  
选配

深灰色  
RAL 7043  
标配

胶衣船体和水线颜色。在Hanse，  
您可以为您的新游艇选择您喜欢的  
颜色。

Gelcoat hull and waterline colours.  
At Hanse, you can select your favourite  
colour for your new yacht.

# COLOURS

HULL & WATERLINE

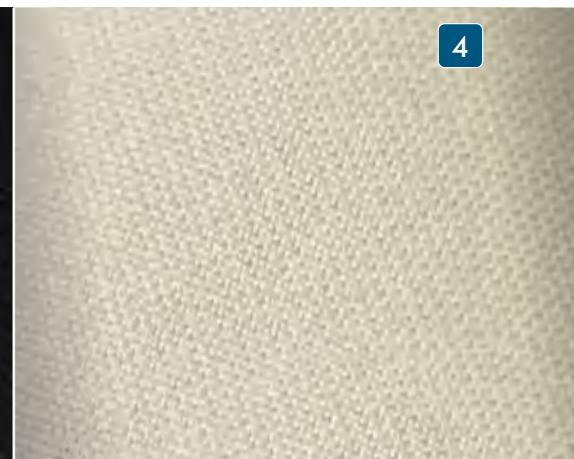
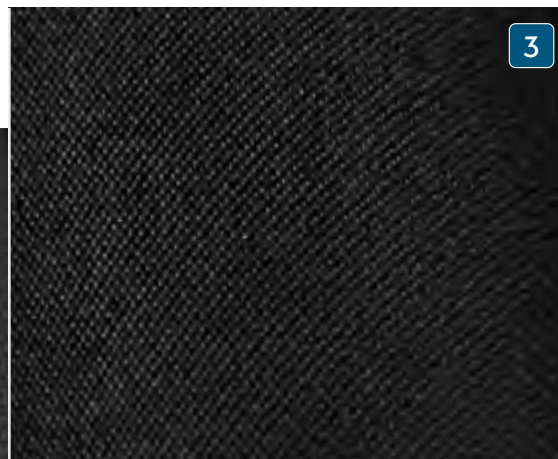
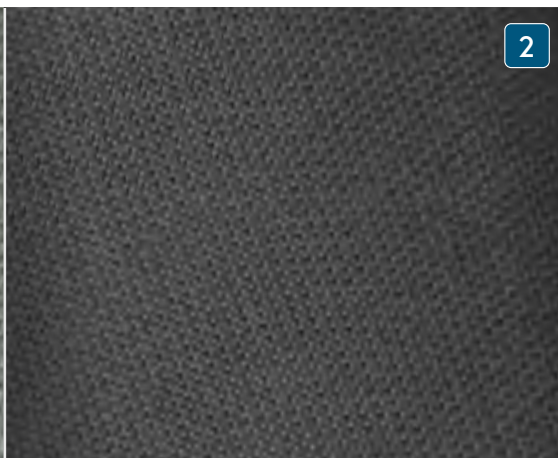
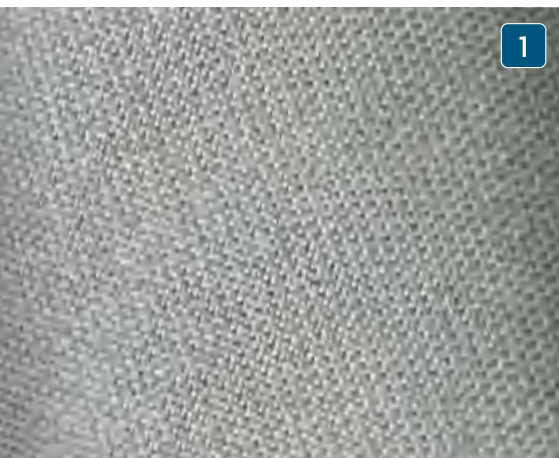
颜色 - 线船体 & 水线

为独特的个性而打造的个性化游艇。有眼光的鉴赏家选择Hanse，因为我们为您提供表达个人风格的机会。您可以发挥创造力的无限可能。我们的专家乐意在选择完美装饰方面为您提供支持。

Your own individual yacht for your unique personality. Discerning connoisseurs sail Hanse, as we offer you the chance to express your personal style. There are no limits to how creative you can be. Our experts are happy to support you in choosing the perfect accents.



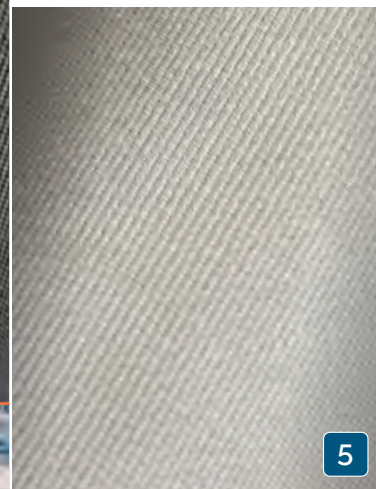
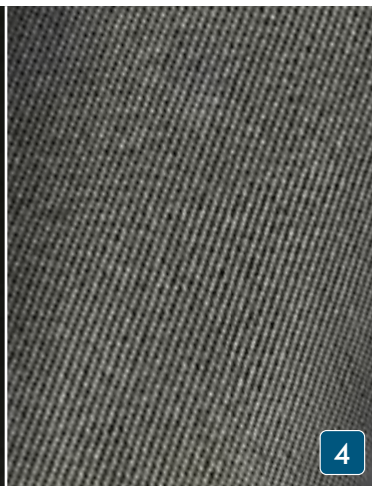
## 主帆布. 遮阳棚. 风挡. 罩子. 雨棚帆布 & 驾驶区帆布



选配：1 浅灰色 2 深灰色 3 黑色 4 奶白色



驾驶区座垫. 日光浴垫. 舵手座椅座垫. 水吧座垫

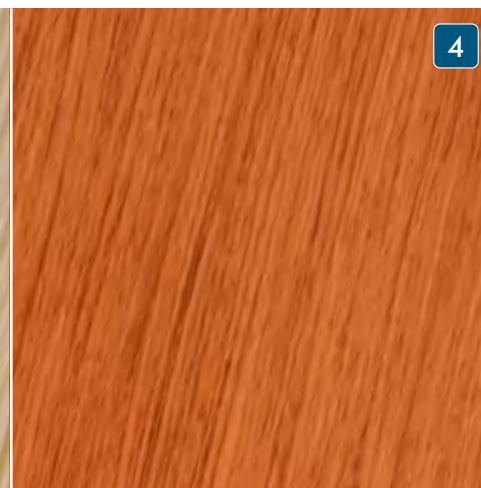
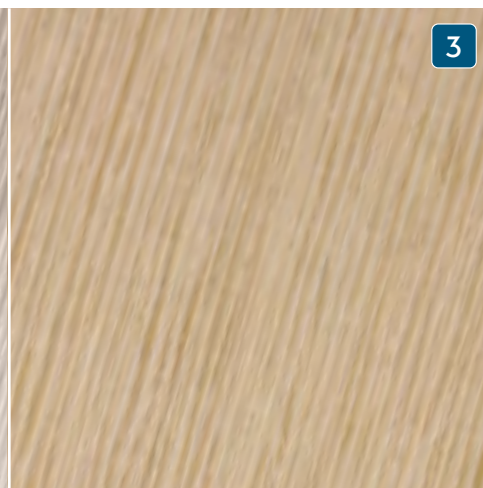
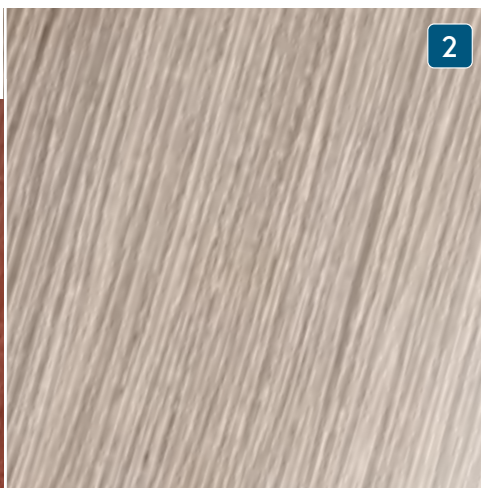
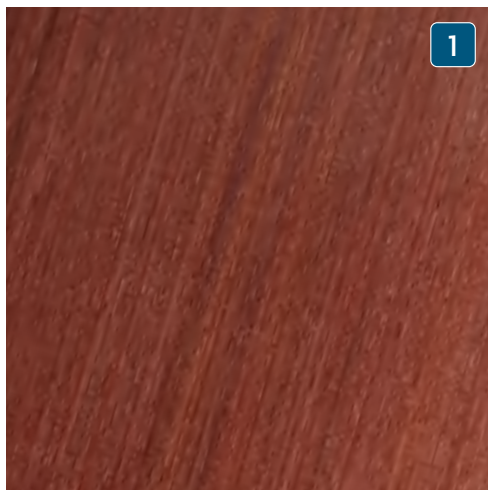


选配：

1 深蓝色 2 红色 3 黑色 4 深灰色 5 浅灰色 6 奶白色

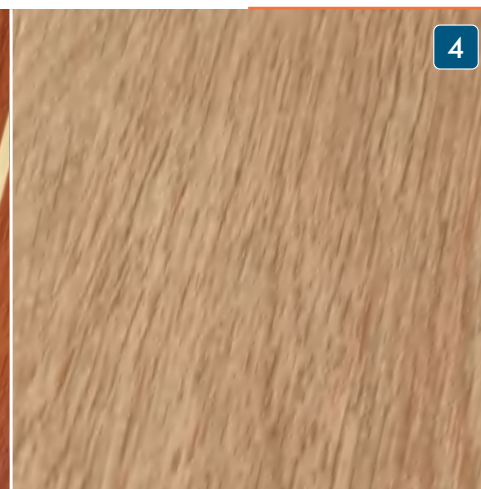
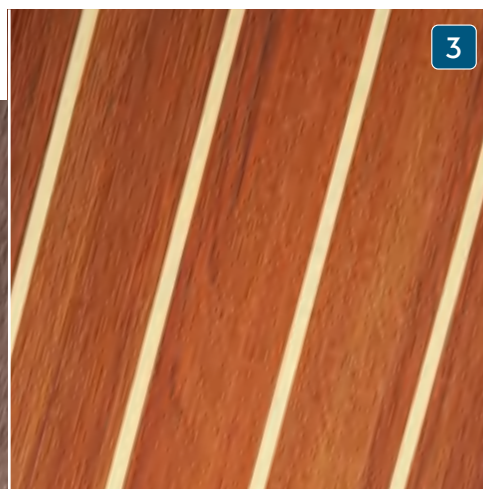
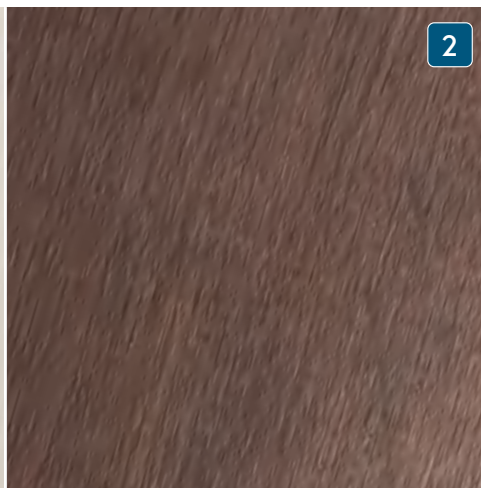
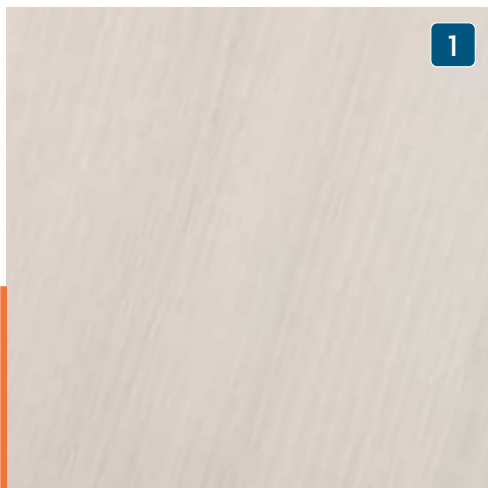
## 家具

ALPI 提供的海洋优化真木饰面。



标配: 1 红木清漆 · 选配: 2 加拿大栗木清漆 3 法国橡木 4 柚木

## 地板

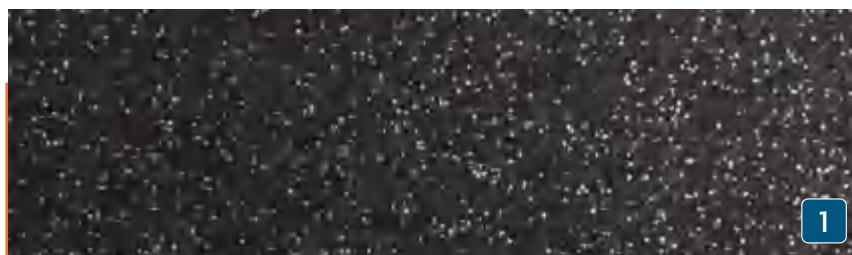


标配: 1 合金欢 · 选配: 2 胡桃木 3 经典条纹 4 浅色橡木





## 厨房台面



1

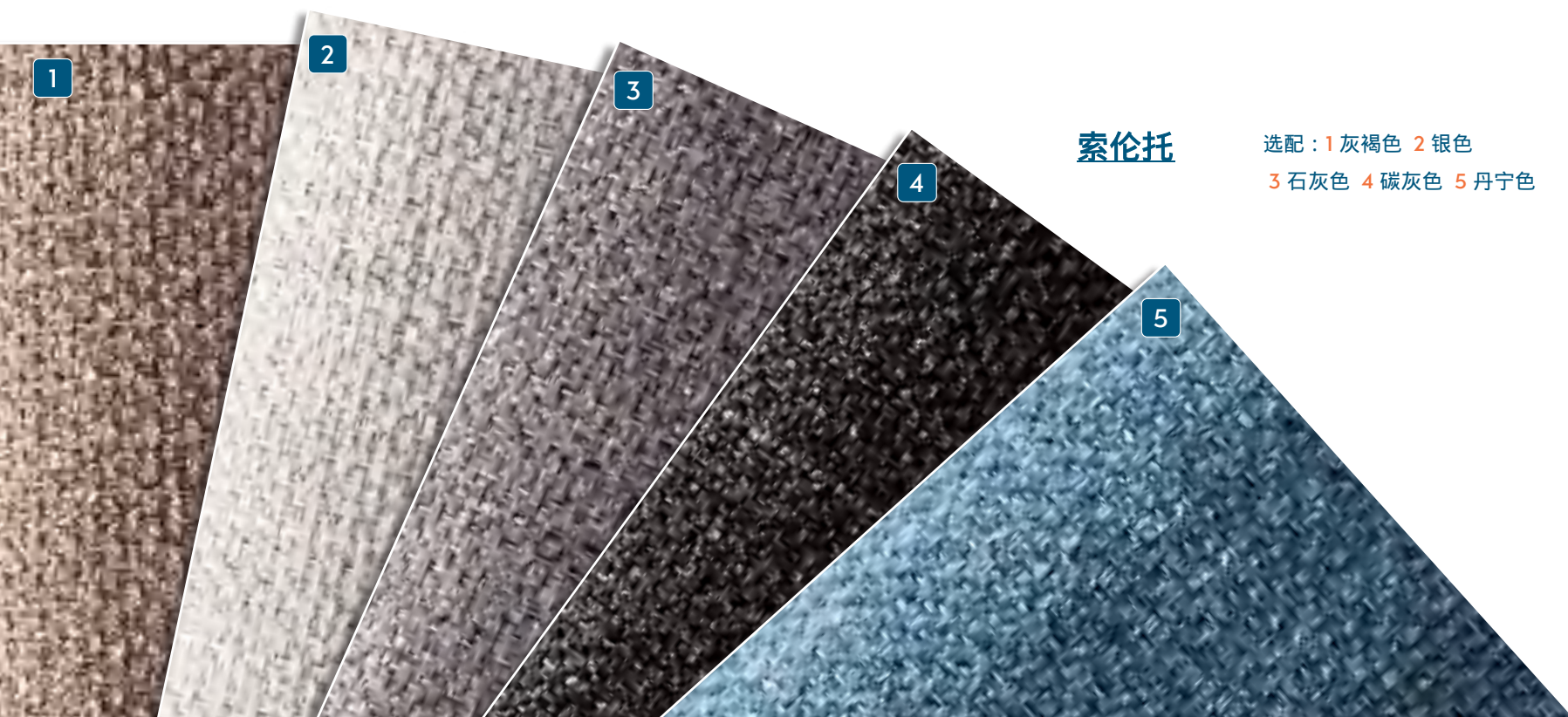
标配：1 石英黑 · 选配：2 白色

2



**波托菲诺皮革**

选配：1 象牙色 2 石岩色 3 泥色 4 黏土色 5 巧克力色



**索伦托**

选配：1 灰褐色 2 银色  
3 石灰色 4 碳灰色 5 丹宁色

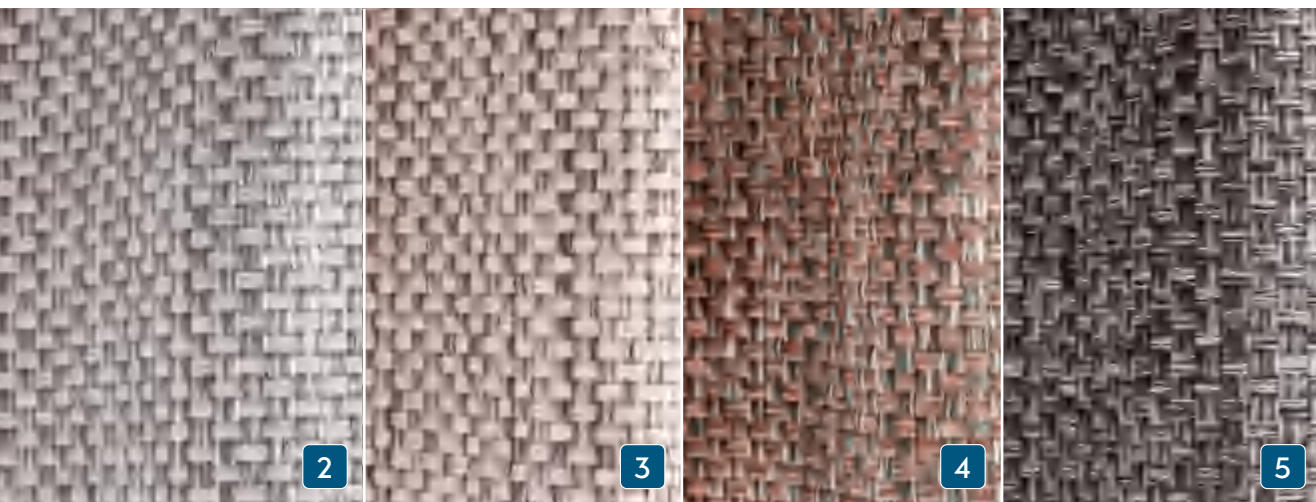






## 蒙地卡罗

标配：奶白色




## 摩纳哥

选配：1 杏仁色 2 青铜色 3 岩石色 4 黑松露 5 哈士奇

## 佛罗伦萨

选配：1 克里夫赛德 2 冰川色  
3 牡蛎色 4 麝香葡萄色  
5 石墨色





帆类型：**传统主帆**  
帆布材料：Elvstrøm SPS 可  
持续性能帆布  
布局：**三边形**  
特点：5个水平帆骨，2个  
缩帆  
点，修剪条纹

帆类型：**自动调整卷帆前帆**  
材料：Elvstrøm SPS 可持续性能帆布  
布局：**三角形**  
特点：4根短帆骨，修剪条纹，银色紫外线保护

SPS

TECHNOLOGY

可持续性能帆（SPS）：有了 Elvstrøm Sails，您可以选择使用主要由回收材料制成的帆布，从而发挥所选船帆布料的差异。这种高端层压帆布柔软且易于操作。

Sustainable Performance Sail (SPS): With Elvstrøm Sails, you have an option of making a difference by choosing a sail cloth made from mainly recycled materials. The high-end laminate sail is soft and easy to handle.



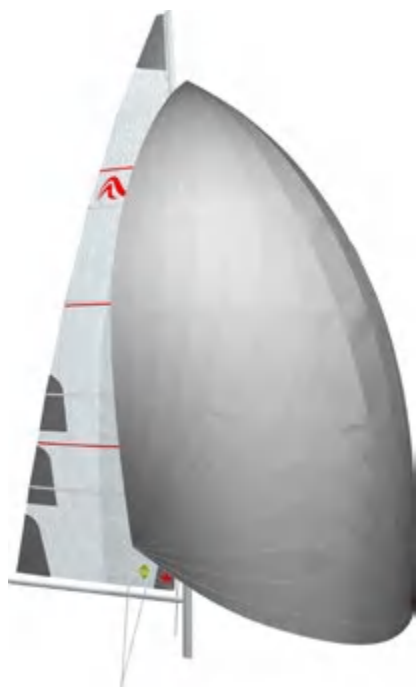


# SAILS

WIDE RANGE OF

所有帆系列都经过配置，为您提供安心。无论您是准备进行大型航行还是更倾向于熟悉的水域，您都将获得可靠耐用的帆配置。

The range of sails are all configured to give you peace of mind. Whether you are off for the big journey or prefer known waters, you will get a reliable and durable sail set-up.



帆类型：传统主帆  
帆布材料：Elvstrøm SPS 可  
持续  
性能帆布  
布局：三角形  
帆类型：球帆  
帆布材料：尼龙  
布局：三角形



帆类型：卷帆主帆  
帆布材料：Elvstrøm SPS 可持  
续性能帆布  
布局：三角形  
帆类型：Reacher（航向扩大  
型前帆）  
帆布材料：Elvstrøm SPS 可持  
续性能帆布  
布局：三角形

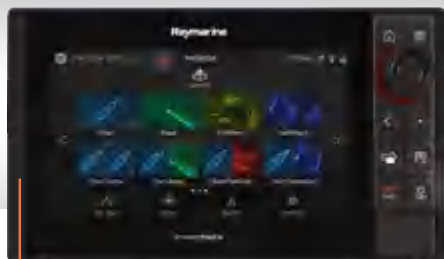


帆类型：传统主帆  
材料：Elvstrøm BlueWater Dacron 白  
色  
布局：交叉切割  
帆类型：Reacher（航向扩大型前  
帆）  
材料：Elvstrøm BlueWater Dacron 白  
色  
布局：交叉切割



帆类型：传统主帆  
材料：Elvstrøm Dacron 白色  
布局：交叉切割  
帆类型：自动调整卷帆前  
帆  
材料：Elvstrøm Dacron 白色  
布局：交叉切割

## RAYMARINE导航包



Raymarine AXIOM PRO 9 S海图仪，触屏多功能显示屏，位于驾驶舱内。



客厅Raymarine VHF Ray63，包含无线遥控手持机



驾驶区2个 Raymarine i70s 多功能显示屏，包含传感器（风向、速度、深度、温度）



## 客厅电视包

客厅电视预留 | 客厅LED平板电视 | DVB-T2 电视天线

## 客厅&驾驶舱娱乐包





Raymarine Evolution 自动驾驶仪，带7英寸显示屏和无线遥控

### 升级-第二海图仪



Raymarine AXIOM PRO 9 S 海图仪，触屏多功能显示屏，驾驶台一边一个



VHF 预留，包括天线和用于 FM 和 AIS 的分频器。

### 升级高级音响



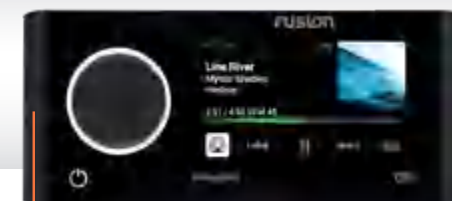
客厅和驾驶舱 FUSION MS-RA70N 多媒体收音机，带蓝牙，无线充电



FUSION MS-NRX 遥控  
- 防水控制驾驶舱所有功能  
- 控制 iPod/iPhone 音乐库  
- 通过 NMEA 2000 接口显示速度、深度、风力和 GPS 数据



客厅2个高质双声道扬声器  
驾驶舱2个高质双声道扬声器  
- 抗震防震，防水设计



客厅和驾驶舱 FUSION APOLLO MS-RA770 多媒体，带 Wi-Fi 和触摸屏  
驾驶舱 FUSION MS-ERX400 遥控  
FUSION 无线连接  
通过移动设备进行遥控

# XTRAS

MORE

410

Hanse的多样选择为您提供更多的自由 - 在空间和设计上。在这里，您会找到专为您的Hanse 410挑选的精选附加选项。

The variety of individual options at Hanse gives you more freedom – spatially and artistically.



- 1 飞桥上的太阳能电池板 2 Raymarine Quantum 2 雷达 3 两张带柚木桌面的驾驶座舱桌，可电动降低成日光浴床，包括座椅垫 4 仪表板上的油门杆 5 两个玻璃纤维操舵轮，Y形辐条（黑色或白色） 6 Delta锚，16公斤，不锈钢，带旋转环和60米不锈钢链 7 两个LEWMAR 45 EST EVO电动绳索绞盘，带自动保险丝 8 游泳平台，手动折叠，带游泳梯 9 主帆布





2



3



4



8



9

1 Solar panel on coach roof 2 Raymarine Quantum 2 Radar 3 2 cockpit tables with teak top, electrically lowerable into sunbed incl. upholstery 4 Throttle lever on the instrument panel 5 Two GRP steering wheels, Y-spokes (black or white) 6 Delta-anchor 16 kg, stainless steel, with swivel and 60 m stainless steel chain 7 2 LEWMAR 45 EST EVO electrical halyard winches with automatic fuse 8 Bathing platform, manual fold-out with swimming stairs 9 Lazy bag with lazy jacks



MADE IN  
**GERMANY**  
SINCE 1990





打破规则，引领潮流。对我们来说，这不仅仅是一个标语。这是我们对每艘成品游艇的承诺。您可以感受、体验和享受海里海里的承诺。

Breaking rules, setting trends. To us, this is more than just a catchphrase. It is a commitment we make a reality with each finished yacht. A commitment you can feel, experience and enjoy sea mile by sea mile. Discover more about this on the following pages.



BREAKING RULES

SETTING TRENDS

打破常规 引领潮流

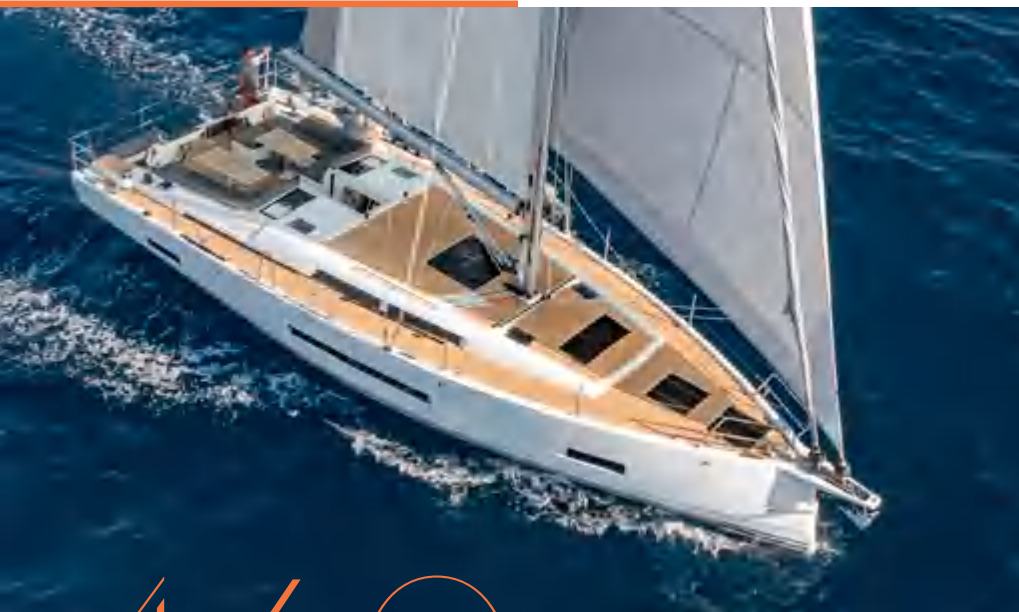
“引人注目的设计、创新功能和非常敏锐的定价相结合，使这个工厂成为一个真正的成功故事。”

Sailing Today Magazine

迄今为止，汉斯制造的游艇已获得超过 70 个国际奖项。

To date, yachts made by Hanse have won more than 70 international awards.

MORE  
THAN



460 MILESTONE

Hanse 460 的推出标志着与Berret Racoupeau合作开发的新设计型号系列的开端。

“这一目标是开发一种新的风格，使其能够在未来的产品线中保持一定的永恒性。任务是将这种





Bei berühmten Regatten feiern Hanse Yachten immer wieder große Erfolge, z.B. auf der Atlantic Rally for Cruisers, der Copa del Ray oder der Nordseewoche.

Time and time again, Hanse yachts achieve great successes in legendary regattas such as the Atlantic Rally for Cruisers, the Copa del Ray or the Nordseewoche.

汉斯与世界知名的游艇设计师合作打造他们的游艇。  
我们的第一个联合开发立即成为经典：  
HANSE 371。

Hanse create their yachts in cooperation with world-renowned boat designers. Our first joint development became an instant classic: the Hanse 371.



全世界的航海爱好者都青睐汉斯帆船。  
世界第二大帆船制造商的国际经销商网络向70个国家提供服务。

All over the world, sailing enthusiasts favour Hanse yachts. The international dealer network of the world's second-largest sailing yacht manufacturer delivers to 70 countries.

“在世界的尽头，汉斯游艇与德国一样令人垂涎。”

Anthony Bishop | 澳大利亚经销商

The introduction of the Hanse 460 marks the beginning of a redesigned model range developed in cooperation with Berret Racoupeau.

新灵感的识别特征与历史DNA相融合。 ” Olivier Racoupeau | 游艇设计师



360  
DEGREES

舒适地从家中开始您最喜爱的Hanse游艇的个人导览，使用我们的360度全景图。花费您所需的所有时间，以引人入胜的细节发现每一个细节。尽情享受船舱下的航行体验。

Start your personal tour around your favourite Hanse comfortably from home with our 360 degree panoramas. Take all the time you need and discover every detail in captivating detail. Enjoy navigating below deck.



1,500  
OPTIONS

“您不会找到比HANSE更可定制的生产型游艇。”

Maxim Neumann | Hanse销售主管

得益于种类繁多的室内装潢、家具木材和地毯，我们提供了数以千计的个性化家具布置。像这样的广泛选择在市场上是独一无二的。

Thanks to the wide range of upholstery, furniture wood and carpets, we offer thousands of individual furnishing arrangements. A wide choice like this is unique in the market.

89





在汉斯，890 名专业的帆船爱好者携手并进。由尖端的生产工艺提供支持。完全致力于他们的职业。

At Hanse, 890 dedicated sailing enthusiasts work together hand in hand. Supported by cutting-edge production processes. Driven by total commitment to their profession.

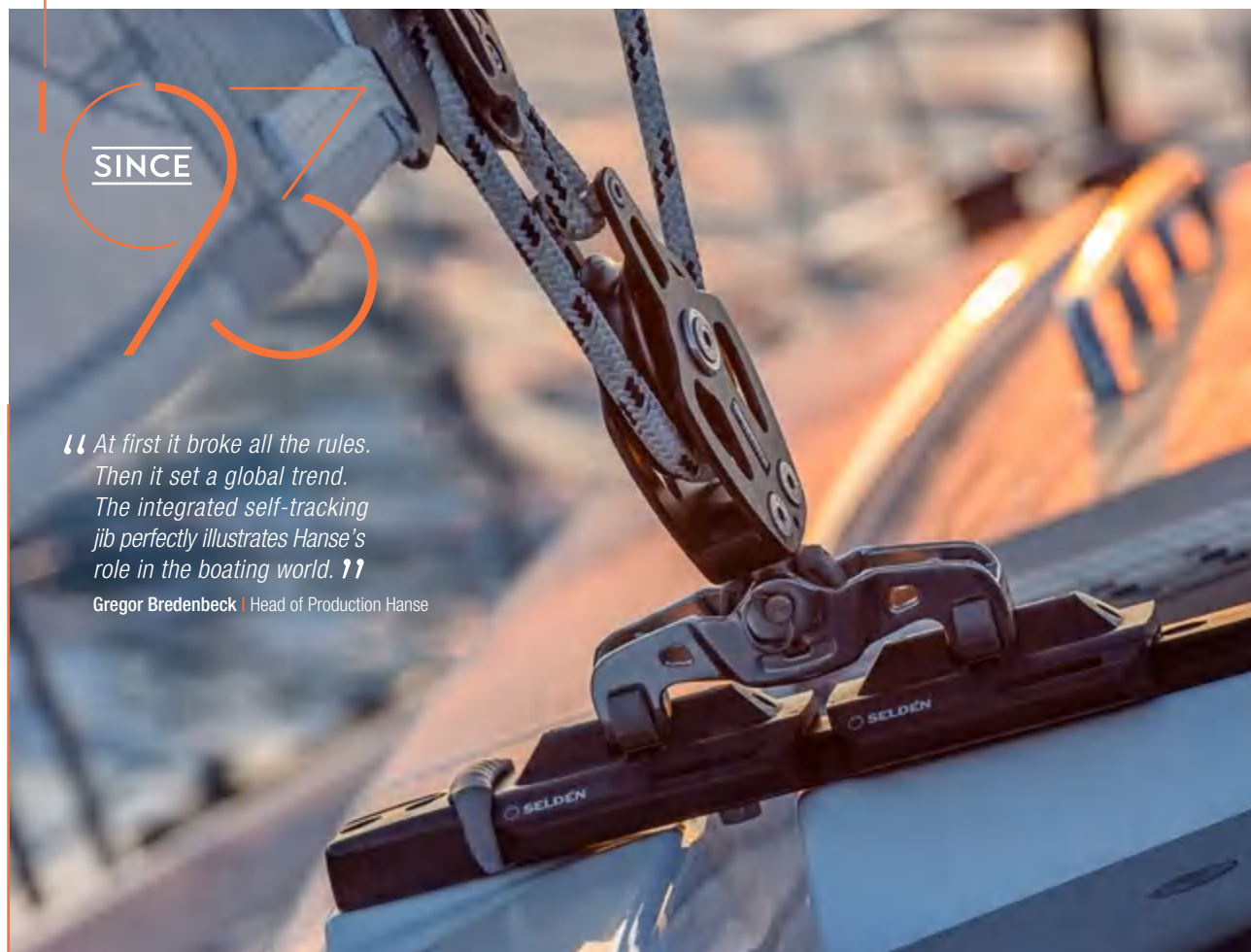
“我们和我们的客户是志同道合的灵魂：没有什么比设计完美的帆船更让我们享受的了。”

Andreas Unger | 产品经理



1990 年代初，第一艘汉斯开始了造船业的革命。它采用了有史以来第一个批量生产的集成自前帆自动换舷系统。

In the early 1990s, the very first Hanse started a revolution in boat building. It featured the first integrated self-tracking jib ever produced in series.



SINCE

“ At first it broke all the rules.  
Then it set a global trend.  
The integrated self-tracking  
jib perfectly illustrates Hanse's  
role in the boating world. ”

Gregor Bredenbeck | Head of Production Hanse

HANSE YACHTS



Hanse游艇的每一个细节都令人印象深刻，是让您叹为观止的杰作。它们不仅仅是一个完美协调的设计和现代技术的集合。它们反映了汉斯工程师的经验和专业知识。他们对游艇的热情可以从每艘汉斯的无可挑剔的精确度和一丝不苟的细节中体现出来。

Impressive in every detail, Hanse yachts are masterpieces made to take your breath away. They are far more than a perfectly harmonised ensemble of design and the most modern technologies. They reflect the experience and know-how of Hanse engineers. Their passion for yachting can be felt in the unmistakable precision and meticulous detailing found in every Hanse.

HANSE  
ENGINEERING







NEW GENERATION  
OF FORWARD





## 龙骨船体连接

安全第一。龙骨板牢固地放置在由环氧树脂制成的超强基床中。这意味着龙骨直接锚定在强大的地板结构中。龙骨螺栓，包括垫片和螺母，均由不锈钢制成。

Safety first. The keel plates lie securely in an ultra-strong bed made of epoxy resin. This means that the keel is directly anchored in the powerful floor structure. The keel bolts, including discs and nuts, are made of stainless steel.



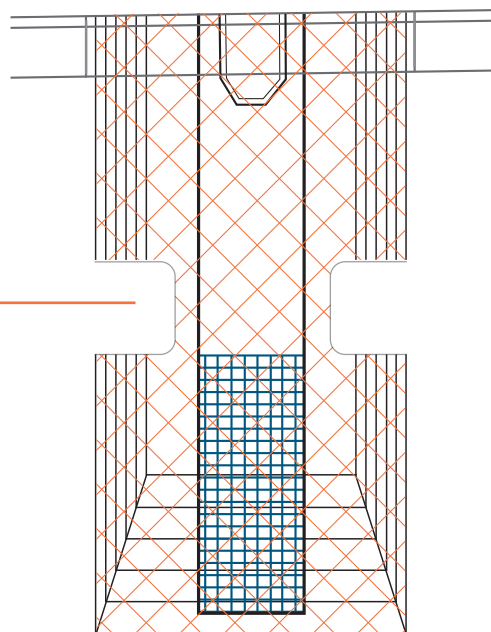
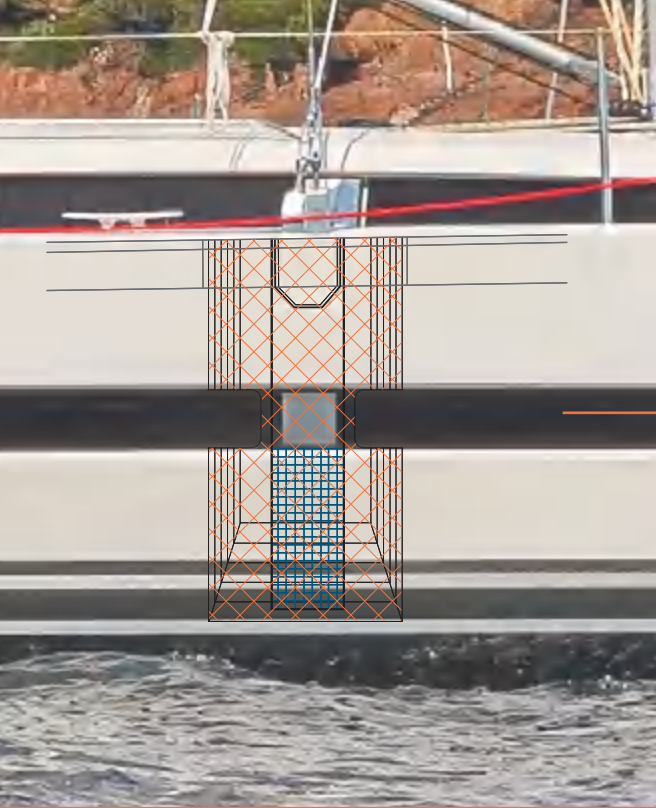
不锈钢螺栓  
甲板  
最佳配方性能胶水  
船体  
螺纹铝板

## 船体甲板连接

Hanse已经开发了一种特殊的船体-甲板连接，远远超出所有标准要求。除了使用高度耐用的聚酯粘合树脂外，甲板和船体还通过高强度的螺栓进行固定。这样做产生了一艘稳定、无扭曲、具有运动特性的帆船。

Hanse has developed a special hull-deck connection which goes well beyond all standard requirements. In addition to the use of highly robust polyester bonding resin, the deck and hull are anchored with the use of high-strength bolts in the cleats. This results in a stable, torsion-free yacht with a sporty character.





## 碳纤维加固链板

在您的汉斯游艇上，每一克都至关重要。这同样适用于超强的链板，其在需要强度的地方专门使用碳纤维进行加固。所有载荷都优雅地传递到船体中。这样，您在甲板下的休息区保持空旷，可以尽情享受海上生活。

No gram is too much in your Hanse. This also applies to the ultra-strong chain-plates, which are specifically reinforced with carbon where the strength is needed. All loads are transferred elegantly into the hull. Your lounge below deck remains free so you can enjoy life at sea.

## 三明治结构

Hanse 410采用高质量的三明治工艺进行构建。船体采用多层精选材料，每个细节都经过精确计算。它特别轻巧，并且由于外层使用了乙烯基酯材料，完全抵抗渗透现象。

The Hanse 410 is constructed using the high-quality, sandwich process. The hull features several layers of select materials and is precisely calculated in every detail. It is particularly lightweight and thanks to the exterior vinyl ester layer completely resistant to osmosis.

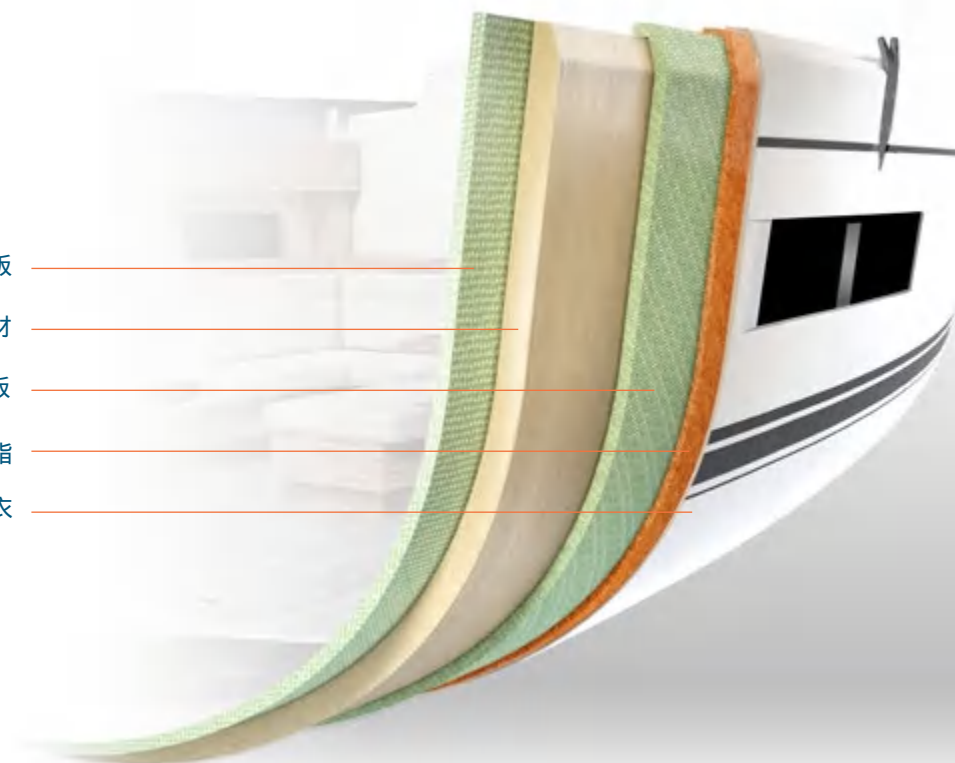
GRP层压板

芯材

GRP层压板

乙烯基酯树脂

胶衣

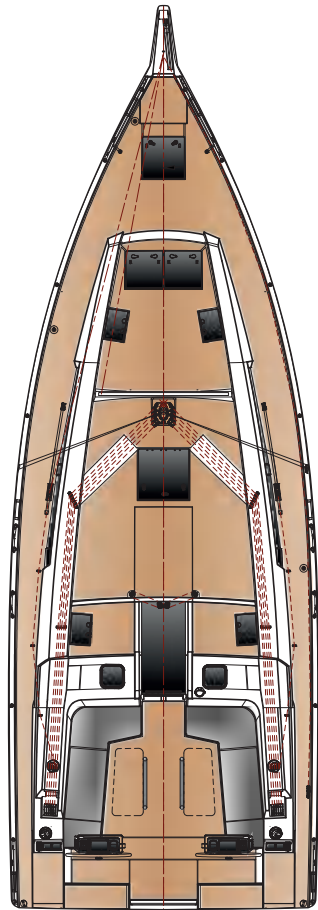




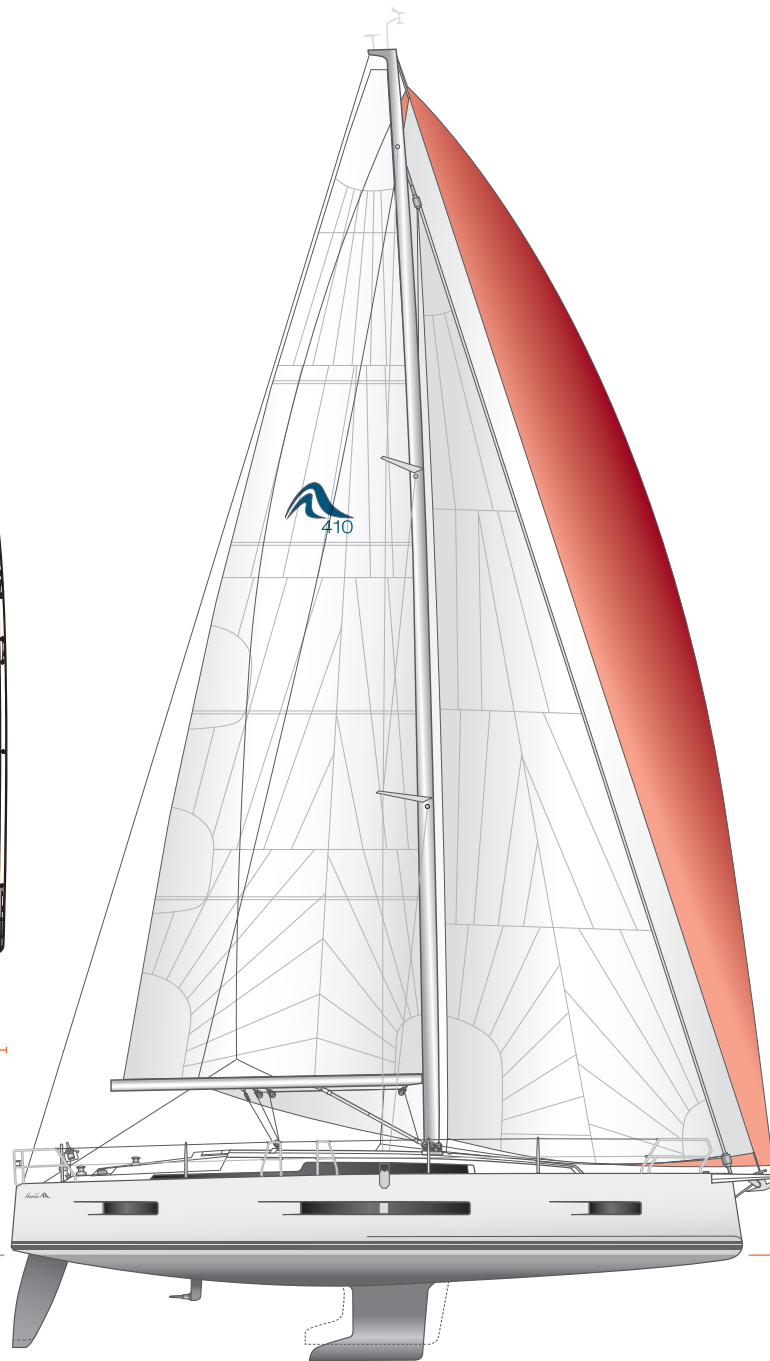


# 410 技术参数





船宽4.29 m | 14'1"



总长 12.55 m | 41'2"

总长		12.55 m	41'2"
船体长		11.99 m	39'4"
水线长		11.55 m	37'11"
船宽		4.29 m	14'1"
吃水			
浅龙骨		1.70 m	5'7"
L型龙骨, 中等		2.10 m	6'11"
排水量			
浅龙骨	approx.	9.85 t	21,715 lb
L型龙骨, 中等	approx.	9.68 t	21,341 lb
发动机 (柴油)			
标配	approx.	39 PS	39 HP
选配	approx.	56 PS	56 HP
油箱	approx.	160 l	42 gal
淡水箱	approx.	295 l	78 gal
CE 证书		A-10	
设计		Berret - Racoupeau	
内饰5		Berret - Racoupeau	

水线以上桅杆高度	approx.	19.99 m	65'7"
总帆面积	approx.	84.00 m <sup>2</sup>	904 sq ft
下风帆面积	approx.	179.00 m <sup>2</sup>	1,926 sq ft
主帆			
标配	approx.	49.00 m <sup>2</sup>	527 sq ft
卷帆	approx.	46.00 m <sup>2</sup>	495 sq ft
自动调整前帆	approx.	35.00 m <sup>2</sup>	376 sq ft
大前帆	approx.	43.00 m <sup>2</sup>	462 sq ft
Crossover	approx.	74.00 m <sup>2</sup>	796 sq ft
球帆	approx.	130.00 m <sup>2</sup>	1,400 sq ft

以上尺寸仅供参考。参数和材质如有更改，恕不另行通知。



### 传感器

监控您的充电  
水平和设备



### 开关控制

通过遥控器操作  
您的电子设备



### 报告问题

直接联系您的经销商  
以获得快速帮助



### 商店&配件

用于订购设备、用品  
和备件的功能



### 保险

Pantaenius 提供的独  
家应用内的所有船舶  
保险的报价



### 手册

一个应用程序  
中的所有手册  
和说明



### 警报

推送当前事件  
的通知



### 维护

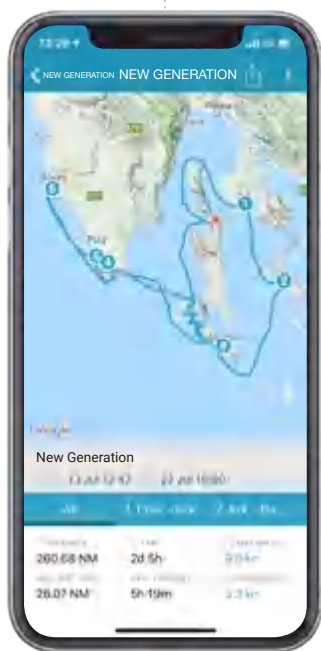
在到期日之前  
推送通知以维  
护所有组件



### 航程

与朋友分享您的  
航行和航程数据





# MY HANSE SAFETY CLOUD

## 我的汉斯安全云智能系统

一切尽在掌握。使用我的汉斯安全云智能系统，您可以完全访问汉斯的所有重要数据。

随时随地。BoatMonitoring、eLogBook 和 eServiceBook 等智能应用程序可让您轻松舒适地监督您的游艇，自动更新日志并密切关注所有维护日期。

Everything under control. With the MyHanse Safety Cloud you gain full access to all important data of your Hanse. At any time and any place. Intelligent applications as BoatMonitoring, eLogBook and eServiceBook allow you to supervise your yacht easily and comfortably, to keep the logbook automatically up to date and to keep an eye on all maintenance dates.



## 3D呈现梦想

何不尽情放飞你的想象力呢？我们全新的配置工具以三维形式呈现你梦寐以求的Hanse，从各个角度都能看到。颜色、表面、龙骨变体 - 你可以一键改变它们，按照你的喜好随意转动船只，并从任意角度查看。一旦你对结果满意，只需再点击一次，你就可以订购你的新梦幻Hanse了。打开深色模式，仿佛你个性化的Hanse 410已经在码头等着你了。

How about indulging your fantasies? Our brand-new configurator presents your dream Hanse in three dimensions and from all perspectives. Colour, surfaces, keel variants - you can change them all with a click, turn the boat in whatever direction you fancy and inspect it from any angle. And once you're happy with the result, you can order your new dream Hanse with just one more click. Switch on dark mode and it actually looks like your personalised Hanse 410 is waiting for you in the marina already.





# YOUR HANSE

3D配置器

你更喜欢天蓝色还是橙色？尝试一下色调一致的座椅套或色彩点缀怎么样？是否需要额外的床位供家人或最好的朋友使用？配置工具允许你尝试不同的配置和材料，直到找到完美的组合。

Do you prefer sky blue or orange? How about tone-on-tone upholstery or colour accents? Do you need additional bunks for your family or for your best friends? The configurator allows you to experiment with different configurations and materials until you find the perfect combination.









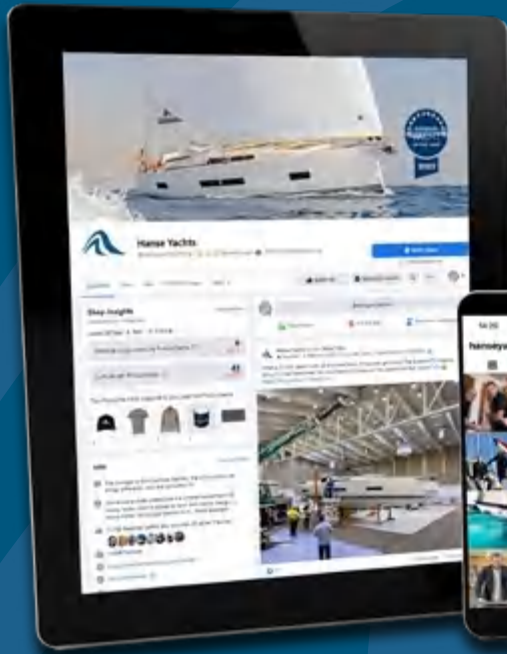


Design for  
FUTURE



# SOCIAL MEDIA

FOLLOW US



This brochure is not contractual. The yachts depicted partly comprise special equipment not included in the standard scope of supply. Illustrations may not correspond with current versions. Subject to alterations in design and equipment without notice and errors excepted. Photos/Illustrations: HanseYachts AG, Nico Krauss, Jérôme Kelagopian, Peer Kolberg, Peter-Paul Reinmuth, Björn Willer, Berret-Racoupeau, Malwin Faber, Navico, B&G, Fusion, Raymarine, Eivstrøm, Nico Martínez · Design: ULFSON desgn – ulfson.de and Thea Harksen – design-harksen.de